



Oamaru The Telegram

100% locally owned 8,000 homes weekly

21st November 2017

Phone 434 9651

Issue 370

LINDSAY WHYTE
Painters and Decorators Ltd
48 Years Experience Master Painter
FREE PHONE 0800 242 8611

- Interior
- Exterior

CALL NOW!



Hope you all enjoyed the Heritage weekend - Don't forget The Waimate Strawberry Fare commences at 10.30am on the 9th of December.

You can always tell when Christmas is close - as we start saying days until Christmas and not weeks or months...

If you have events on over the two weeks of Christmas and New Year - you will need to book in your advert for the last edition before the 14th of Dec.

Enjoy your week, Regards The Telegram.

WARMER, DRIER & HEALTHIER

Insulate and Ventilate now for a cosier home

Earthwool Glasswool Insulation - installed by us or we will supply at fantastic prices - only **\$995** for a 80sqm R3.6 Ceiling installed.

Drivaire Home Ventilation Systems - rid your home of moisture and enjoy a healthier living environment with a quality NZ manufactured system.

Call today for a free quote. We also offer a range of **Hitachi** and **Mitsubishi** Heat Pumps at extremely competitive prices.



LIVING HOUSE

Ph. John Pile on 0800 434 600
Email john@livinghouse.co.nz

www.livinghouse.co.nz

New Zealand Pet Foods Shop
Direct

Specialising in fresh & frozen RAW feeding

Dog rolls, Cat & Dog biscuits & dried treats

Live Fish & fish supplies

Bird Seed & Accessories

and more...

16 Ouse Street | 03 434 8484
turn towards the sea at Waitaki Girls' traffic lights



10L DULUX WEATHERSHIELD X10 WHITE BASE \$149

10L BERGER SOLARSCREEN ROOF \$129

5L CABOT'S AQUADECK \$69

*Offers end 4 December 2017. Tinting charges may apply. Not available in conjunction with any other offer or discount. *Applies to vivid white base only. Dulux, Weathershield, X10, Berger, SolarScreen, Cabot's and Aquadeck are registered trademarks.

OAMARU • Corner Reed & Eden Sts
Ph. 434 8654 • guthriebowron.co.nz

[pinterest.com/guthrie_bowron](https://www.pinterest.com/guthrie_bowron)
[facebook.com/GuthrieBowron](https://www.facebook.com/GuthrieBowron)

GB
Guthrie Bowron
Decorating Specialists

Magnificent Family Home With Options



- 4 double bedrooms plus study, all with sliders to a manicured, level, easy care, 1136sqm section. 3 bedrooms are ensuite adding to the attraction.
- Spacious living room, with large heat pump, and open plan to dining as well as the fantastic gourmet kitchen.
- Double garage (auto opener) plus internal access.

Web Ref #SWOU11628 Buyer Enquiry Over \$689,500

Heather Burgher
Sales Manager
021 132 1441
heather@southernwide.co.nz

225 Thames St, Oamaru
Ph 03 434 7422
oamaru@southernwide.co.nz
www.southernwide.co.nz



Professionals
van Schreven Holdings Ltd
MREINZ licenced real estate agent REA 2008



**OFFERING SUPERGOLD CARD HOLDERS
A COMMISSION RATE DISCOUNT
Of 15% on Standard Commission Rates**

FULL details on Enquiry

No up front costs – Fees paid on sale only

van Schreven Real Estate E: office@oamaruhomes.co.nz
211 Thames Street Oamaru www.oamaruhomes.co.nz
Ph: 03 434 9880 www.facebook.com/oamaruhomes

Kevin Mclay Plumbing Ltd

with over 40 years experience

Ph. 021 477 244 A/H 03 437 1248



Safe and professional tree care, Large or small trees, Difficult removals, Crown lifts, Height reduction, Felling, Hedge trimming and Pruning trees to your Specifications.

Qualified Arborists
Matt Slater 027 241 3343 03 437 1440
treesculptotago@hotmail.co.nz Oamaru

Paul Familton PAINTER

Qualified tradesman with experience in all types of decorating.

Interior & exterior work | Wallpapering
Painting | Water blasting & Moss Kill

cell 0274369831 A/H 4371608

Locally owned & operated for over 25 years.

FREE QUOTES

Trees Need Trimmed?



KEA TREEWORX
Certified Arborists

Pruning - Removals - Chipping

Chris Conklin 027 484 3395

Jack Vaughan 021 582 300

keatreeworks.co.nz

KITCHENS RYCOLE JOINERY

From the heart of our workshop to the heart of your home

44 Homestead Road, Oamaru
P 434 5012 | M 027 276 2866



December 25th - 12-2PM

**GALLEON CHRISTMAS
LUNCHTIME BUFFET**

GALLEON FAMILY
COMPLEX

ADULT - \$85

PENSIONERS - 10% Discount

0-11 YEARS (\$3 Per Year)
12-15 YEARS (\$4 Per Year)

Phone: (03) 437 0128

500 Thames Highway

f @GalleonComplex

@galleonfamilycomplex

galleoncomplex.co.nz



As I write this, North Otago is really in need of rain pleeeeeease! Dragging hoses about with Scruff pulling on the end and hose connections bursting often, is testing my patience! Nothing worse in a Spring garden to see droopy leaves when all plants are pushing out new growth - a soak is more effective than a sprinkle on

those shallow rooted plants like Rhododendrons, Azaleas and Camellias and newly planted annuals.

I have had a couple of gruelling days, bent over trimming Box hedge - mine are all established to the height and width required, so I take them back to the last growth. Newly planted Box will probably need only the tops straightened, leaving the sides to thicken - plus a boost with slow release fertiliser.

After many years trying to grow plants regardless of conditions preferred - thinking as long as I kept the water up and protected them through the Winter, I could beat nature BUT I finally gave up. It's a waste of time and money nursing plants that need a warmer climate and more rain than we have here. Plants like Hibiscus, Banana, Gardenia, Palms - anything that requires a tropical seasonal, rain is going to struggle. However, Bougainvillea is growing here on the coast - mine can be fine for a couple of years, but other years the frost really knocks it back. Read plant labels and make sure that our conditions are right for the plants here. For example, there are some lovely Pelargoniums for sale now, but I have yet to have one survive the Winter in my garden, although I see them growing well on the South Hill where the frosts are not so harsh, so I guess it's a matter of looking at what is growing well in gardens close to you and knowing that the same plants will do well in your garden.

Roses: I have not needed to start spraying Roses for Green Fly and disease yet. A systemic insect / fungus combined spray will take care of both Green Fly and fungus if you follow the instructions and spray every 10 days to get on top of infestation. Keep the food up as they flower - it's hungry Roses that are more susceptible to disease. Fish emulsion is a wonderful folia feed, as well as a deterrent to Aphid and Slow release Rose fertiliser will feed each time you water.

I will once again sing the praises of raised gardens. Advantages include: soil warms up faster in the Spring and doesn't cool as fast in the Autumn. Limited bending, better drainage, soil is not walked on eliminating compaction, can be a garden feature as it has a specified geometry and form. Studies have shown that a raised bed garden may be up to two times more productive per square foot compared to normal gardening techniques. The raised garden can be any length you want, but it shouldn't be more than 4ft wide so you can reach across comfortably from either side. It can be as high as you want it, but keep in mind that the higher you go, the more support you will need to build. A raised vegetable garden must be built in a spot that gets all day sun. Raised beds for shade and moisture loving plants, need to be closer to the damp ground - raised too high and the drainage is too great for these plants. Once you have constructed your raised bed, fill with fresh soil, compost and well aged manure. Wood surround must be untreated timber. Rocks are an economical option, but they tend to

lose soil with rain and watering. We are fortunate here in Oamaru to have our own versatile Oamaru stone and there is also the ready made wooden raised garden surrounds on offer.

Vegetables: Keep mounding Potatoes to give depth for them to produce - Consistant watering is important for Potatoes and this goes for all root vegetables. Leafy veg don't need any extra feeding at this time of the year - it will just encourage them to bolt. Only plant as many plants as you think you would use when ready to pick. Hold back the other small seedling plants from the same batch and keep in a semi shady place until required for planting. The small plants will hold if watered only when too dry - over watering will encourage rot . Keep Pumpkin and Squash plants mulched - roots are fragile until their large leaves grow to create the root shade needed. Corn seeds sown last month are now ready to plant out. Planting Corn in squares rather than rows, will ensure pollination on the lower tassels and add support during strong winds.

Well done Ardgowan School Fund raising members, for organising and holding your very successful Garden and new home visit day last Sunday.

Cheers, Linda.

What is White Sunday

White Sunday is a national holiday in Samoa falling on the second Sunday of October, with the Monday following a public holiday. It is a day for parents and communities to acknowledge and celebrate childhood by hosting special programs during church services which include scriptural recitations, biblical story reenactments, and creative dance performances. Children receive gifts (often new clothing and/or school supplies) on White Sunday and are allowed privileges normally reserved for elders, such as being the first to be served food at family meal time.



On White Sunday, Samoan women and children dress completely in white clothing. Some of them trim the clothes with the other two colors of the Samoan flag, red and blue. Men will wear white shirts with either white slacks or the traditional 'i.e. faitaga form of the lavalava. If a lavalava is worn it need not be white. White Sunday is also celebrated in Tonga.

In the Samoan language the holiday is called "Lotu Tamaiti," literally "Children's Service" or "Prayer for Children."

There are differing opinions in regards to the origin of this holiday. Some believe White Sunday to be a Christian adaptation of an indigenous pre-contact celebration of certain planting and harvesting seasons. Others assert that the holiday coincides with a family celebration that became widespread in the 1920s in commemoration of Samoans who succumbed to the influenza epidemic of 1919; this epidemic, introduced through the ambivalence of the New Zealand colonial administration, took the lives of 1/5 to 1/4 of the Samoan population, many of them children. White Sunday is a time to also get with brothers, sisters and even cousins to recite something together. It is a tradition in all the Protestant churches.

Central Podiatry Limited

Nathan Dickson

Cost \$42 pension or community service, house calls available
Quality treatment of all foot and lower limb conditions
Community House, Oamaru Ph: 434 8862

The complete transport solution

- School bus service
- Charter buses
- Transport for teams & conferences
- 20-50 seat coaches available



RITCHIES

"Moving Kiwi's since 1930's"

Ph. 434 7964

5a Nen St, Oamaru

oamaru.depot@ritchies.co.nz

FREE SHOES
FREE HATS
FREE BAGS
FREE WALLETS

Go in the draw to
WIN YOUR PURCHASE PRICE BACK!

Neat Feet

83 Thames St, Oamaru,
p. 03 434 9698
e. Katrina@neatfeet.nz

Drawn Dec 15 2017 *Terms and conditions apply

BRYDONE WHOLEFOODS STORE
ORGANIC & NATURAL FOOD SPECIALISTS

NEW SEASON JERSEY BENNES
in store now!

6km's south of Oamaru, Ph 434 6744

(OLD DETROIT DINER)
WAITAKI
 CAFE & DINER

Dine in or takeaways
REAL MEALS - FRESH OR FROZEN
DELIVERY AVAILABLE
 from 11am - 1.00pm, Mon - Fri
CALL US FOR DETAILS 437 1750
NEW OWNERS



JONELL'S FLORIST •
Christmas Wreath Class
 TUESDAY 12TH DECEMBER
 PH 4349150 TO ENQUIRE/BOOK



December 5th & 12th
GALLEON LUNCHTIME
CHRISTMAS CRACKER

12:00PM - 3:00PM
\$25pp

GALLEON FAMILY COMPLEX
500 Thames Highway
Phone: (03) 437 0128

@GalleonComplex @galleonfamilycomplex galleoncomplex.co.nz



SqualDesign
BLACK FRIDAY

Get a **new** company website
 with a **unique** responsive design!

~~\$1099~~ **Only \$999!**

Email at discount@squaldesign.co.nz
 to take advantage of this amazing deal!

Or Call us on 0278219751


www.facebook.com/squaldesign/

Visit www.squaldesign.co.nz/blackfriday

North End Health Centre
 4 Frome Street Oamaru 9400
 P. 03 437 0347 F. 03 437 0036

EXPERIENCED • PROFESSIONAL • CARING
 New Patients Welcome.
 • Dr Andrew Wilson • Dr Margaret Larder • Dr David Whittet
 • Dr Justin Shenton • Dr Neil Lockley
www.northendhealthcentre.co.nz

Junction Doctors
 81 Wansbeck Street Oamaru 9400
 P. 03 434 2112 F. 03 434 2430



What's Happening At Weston Playcentre?

It's hard to believe that we are already nearly halfway through Term 4! As usual it has been all go at Weston Playcentre. Last week the tamariki enjoyed making some special 'kiwi' fairy bread to mark 'Save the Kiwi' month. We enjoyed this for morning tea along with some other kiwiana inspired treats, yummy! On Tuesday this week we braved the chilly wind on our excursion to the bike park and playground at Friendly Bay. A great time was had by all zooming around on our bikes and scooters. The children especially enjoyed the big slide (wow...these children are brave!!) and the flying fox at the Steampunk Playground too. It was great to see some of the children really challenging themselves and trying new things with the support of their friends! If you and your little ones would like to join in the fun you are welcome to pop in to Weston Playcentre for three free visits. We are open 9-11.30 am Tuesday to Friday at 2 Airedale Road, Weston (beside the school).



Oamaru Heritage Radio

Tuesday evening, 4pm to 10pm. "Trevor's Tuesday Variety Time" Oamaru 88.3.

Internet listening at www.ohr.nz



Tuesday: 21st November

- 5.15 Item for Younger Ears: Story, The Thief Lord, by Cornelia Funke, Pt 8/12
- 6.00 Classic Comedy: ISIRTA, Comedy from the BBC
- 7.30 Concert Piece: Bach; Choral Preludes, BWV 608, 622, 635, and Partita No 2 in D
- 9.00 Reading: Wake The Dead, by Dorothy Simpson, read by Terence Hardiman, Pt 5 of 16

Thames St more people-friendly

Earlier this year, Grey Power North Otago decided Thames Street could be made a little more age-friendly by the addition of another seat for weary shoppers and travellers. The Council suggested the southern side of Farmers as an ideal spot.

"We are pleased to see the seat now in place and being used," said Paul Hyde, President of the association.

Since making the offer to donate a seat to the community, a number of new seats have appeared along Thames Street.

"Unfortunately," said Mr Hyde, "the other new seats are on the western side of the street, which is the quieter side.

Grey Power believes another two or three seats on the busy side of

Thames Street would further enhance the shopping centre.



Celebrating Christmas – in Brazil

Christmas in Brazil is one of the most important festivals in the country. On the 24th December families get together and they have a Christmas meal, that includes Turkey and a lot of delicious food such as cakes, desserts, vegetables, fruits, champagne.. Before midnight the families have dancing, laughing, fun times together



and exchange presents. At midnight the Fireworks start and Santa Claus comes (which is usually an older family member dressed as Santa) with his big red bag full of presents for the kids (and of course for the ones who behaved well that year also get special attention from Santa) On the 25th December the family have a lunch together and the kids play with the new toys from Santa. The lunch on Christmas day is also special. Christmas is full of age old tradition and customs with the many spiritual elements of the season which is the most important moments of this festive time in Brazil.

The Waitaki Multicultural Council is hosting an International Christmas Dinner on Saturday 9th December at 6pm, Pembroke School Hall, Raglan Street, Oamaru.

Music, Fun and food from around the world. Please bring plate of food to share. Come and join us in the celebrations.



RICE SALAD

1 cup cooked rice, 1 green pepper, 1/2 cup mayonnaise,
1/2 tblsp Chutney, 1/2 tsp mustard, 1/2 small grated onion,
2 tomatoes - quartered,
250gr chopped peaches,
1tsp curry powder.



Combine rice, onion, green pepper, peaches and tomatoes. Mix tog mayonnaise, chutney, curry, and mustard. Pour over rice mixture, toss lightly till well mixed. Flavour improved next day...



Local members of the Air Training Corps.
Taking part in the recent Remembrance Day Service.

WAITAKI MULTICULTURAL COUNCIL

International Christmas Dinner

Saturday 9th December, 6pm
Pembroke School Hall

ENTRY – A PLATE OF FOOD TO SHARE

Raffles, music, food from around the world

ALL WELCOME – BRING YOUR FAMILY AND FRIENDS



For more information Ph. Cecilia 434 5545 or 021 202 0143
Sandra 437 0418 or 027 778 9753



HANDYMAN

PH. TOM 021 0233 2002 OR 434 3326

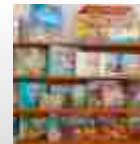
General indoor & outdoor repairs, fencing, decking, paving, landscaping & more.

LOCAL MOVES IN OAMARU Storage/packing/North Is trips

MOUNT COOK

MOVING & STORAGE LTD (EST 1989)

Ph Peter 027 434 1289 www.mtcookmoving.co.nz



The Light

North Otago Christian

27 Thames St
Oamaru

Beautiful Calendars Children's Books
Christmas Cards Latest Gift Range
Nativity Scenes Cards & More!

Mon: 10am-5pm

Tues - Fri:
9:30am-5pm

Sat: 10am-1pm

03 4349025

nocb@hyper.net.nz

Oamaru Repertory Society

AGM

Monday November 27, 7.30pm
Repertory Theatre, Itchen Street

Attendance by all members is requested and all newcomers are warmly invited to attend.

For further info phone Dot
(021) 101 8131



PERSONALISED CHRISTMAS CARDS

for Friends, Family or your customers

Oamaru Print and Copy Ltd

Ph 434 9651 or info@perfectprint.co.nz

Community Diary

Wednesday 22nd

Excelsior Petanque Club Day, 1pm. Ph. 437 1590 or 437 0388.

Lower Waitaki Twilight Golf - Tee off every Wednesday 5-5.30pm, \$6/wk, Hilderthorpe Rd Oamaru. All Welcome Ph 0274 370 370. excellent fun! No handicap needed.

Parents Centre Playgroup (0-6yr) 10am, Salvation Army Hall.

Waitaki Community Gardens Working Bee, Wednesdays 1-3pm. All welcome! Call Ra on 021 115 4884 for 2 hours of fun!

Thursday 23rd

Diabetes Walking Group Chelmer St Gardens carpark 10.30am. Ph Jan 437 2348.

Kakanui Playgroup 9am-12pm, Kakanui School. 1st 3 visits free.

Grey Power N.O. Office open 12.30 - 3.30pm, 2nd floor, Community House. Other times, Ph. Graeme 437 2220.

Mainly Music - pre-schoolers/parents. 10am Oamaru Baptist, 14 Sandringham St. \$3. Ph Angela 437 0911. mainlymusic.org.nz

N.O. Asthma Society Respiratory Exercise Class, 10am, St John Hall Lounge, Exe St. Ph. 434 3202.

Friday 24th

AA Meeting, Orwell St Chapel, 12 noon. Ph. 432 4191 or 437 2928

Meadowbank Bowling Club Friendly Bowls 2pm. All bowlers & Non bowlers welcome. 14 Conway St. Enquiries 434 7196.

Newcomers Coffee group 10.30am at the Opera House. Ph. Christine 027 242 8643.

Summer Indoor Bowls at Centre, 7pm start. Ph Bob 437 1704

White Ribbon Event 7pm, Loan & Merc, Harbour St. Speaker: Jacqui Preston, refreshments and Live Music. Tickets \$15 from Westpac Bank or Southern Wide Real Estate. Profits to Women's Refuge.

Sunday 26th

AA Meeting, Orwell St Chapel, 6pm. Ph. 437 2928 or 437 2337.

Excelsior Petanque Club Day, 1pm. Ph. 437 1590.. St Paul's Church, Coquet St, 10am.

N.O. Scottish Society St Andrew's Concert, Tyne St, 2pm. Afternoon tea, all welcome.

Oamaru Farmers Market 9.30 - 1pm, cnr Wansbeck & Tyne St.

St Paul's Church, Coquet St, 10am.

Monday 27th

Altrusa International of Oamaru meet, Ph. Helen 439 5295.

Breastfeeding Support Group, 10am-12pm, Plunket rooms. Ph. Amy 027 418 6731 or oamaru@lalecheleague.org.nz

Kakanui Playgroup 9am-12pm, Kakanui school. 1st 3 visits free.

Oamaru Repetory Society AGM, 7.30pm, Repetory Theatre, Itchen St.

SeniorNet Oamaru 10am, 2 Trent St,

Ph. Dorothy 434 7278.

Tokarahi Collie Club AGM, 8pm, Tokarahi Golf Club Rooms. Ph. 03 431 2585.

Woodturners, 1pm @ Clubrooms, Oamaru Racecourse. Ph. 439 5795.

Tuesday 28th

AA Meeting, Orwell St Chapel, 7.30pm. Ph. 432 4191 or 437 2337.

Barnardos Kidstart Playgroup 9-12noon, preschool children & parents, St Mary's Anglican Church Hall, Bring morning tea. Diabetes Walking Group, Chelmer St Gardens carpark 10.30. Ph Jan 437 2348.

Justice of the Peace, 11am-1pm, W.I.N.Z building, Coquet St.

Oamaru Garrison Band Practise Nights, Band Rooms, Cnr Severn & Isis St, 7.30pm.

St Paul's Indoor Bowls, 2pm Church Hall. Ph. Mike 434 6722.

U3A Waitaki St Johns Hall Lounge, 2-4pm. Ph. Linda 434 6613.

Up & Coming

Duathlon and Fun Walk / Run series - 6pm Wednesdays, 22nd, 29th November 2017. Friendly Bay. Contact Oamaru Multisport Club, Adair 021 309 439 or Diane 021 081 50688. Enter on the day or online www.sporty.co.nz/oamarumultisportclub.

Home & Garden Tour with award winning properties. Fundraising for Kakanui School playground upgrade. 3rd Dec 11am - 4pm. Incl. Devonshire teas, stalls, raffle (2-4pm). Tickets \$20 from Paper Plus or School Office 03 439 5837.

Waitaki Travel Club Xmas Dinner, Wednesday 6th Dec, Manor Estate, 6pm. Ph. Jacqui 437 0831 for tickets before 30th Nov.

North Otago Rose Show will be held on Friday 1st Dec. 1pm to 6pm, and Saturday, 2nd Dec. 10am to 4pm in the Blind Foundation Hall, Steward Street, Oamaru. All welcome

Public Notices

PAEONY GARDENS. Open daily. Walk through the paddocks of Exquisite Blooms. Flowers available, tuber orders taken. 37 Bluff Hill Road Waianakarua (midway between Herbert and Hampden). Further information ph 4394410

We require committed people willing to work for Aroha on a community marae gardening project. If interested please Ph. Uriana 022 125 5658.

Raffle results

N.O. Rugby Supporters Club Raffle, 1st - John, 2nd - Ian, 3rd - Emma, 4th - Graham, 5 - Mike, 6th - Angela, 7th - Allan, 8th - T. Webb. All winners have been notified.

Classifieds

To Give Away: Horse Manure Ph 434 5607.

For Sale

A3 paper - lowest price \$12.50 per ream at Oamaru Print and Copy Ltd, 146 Thames St.

Crestacraft 4.9 boat, 120 Johnson, auxiliary Mercury, fish finder, skis etc etc. \$8500. Ph. 426 0150 or 027 512 1778.

Incense, Essential Oils, Crystals, Dragon Ornaments and more at the Charity Shop, Eden St, Car park.

Outdoor table with 6 chairs & lounge. Pool table with set of balls & cues. Best offer - Ph. 434 3398 or 021 211 1184.

Single bed, new headboard, Fridge 235Lt - offers. For more info Ph. 434 5420.

Slabwood Firewood, \$100 - 4mtr delivered cut up or \$50 - 4mtr pkt, cut yourself. N.O. Sawmill - 437 1586, 9 Regina lane.

Waitaki District Community Group Directory 2017, updated version @ \$3 per copy available from Citizens Advice Bureau North Otago, 100 Thames St.

Services

Ronald Stanley Mobile Mower & Chainsaw Servicing, chain, parts, new mowers, outdoor equipment. Ph. 027 332 2611 or 434 3300.

General Gardening - everything considered. Ph. 021 450 405.

Smash Palace, for rental cars/vans/bikes, car parts and shuttle service. Ph. 433 1444.

Wanted

Bee swarms; happy to pick up. Ph 027 439 5021.

Books - always buying at Oasis Oamaru, 10 Harbour St. Ph 434 6878.

Situations Vacant

Kids Growing Facilitator. 30-40 hours/week. Starts January 2018. Email: waitaki.community.gardens@gmail.com for job description and to submit cover letter and CV by Nov 24th.

Christmas Open Hours

Let your customers know when you are open!
Email Telegram@oamaru.net.nz with your hours.

Phone 03 434 9651



AGM Block
advert for only
\$20/week
Ph 434 9651

HANDY PH. LIST

Art Studios

- ▶ Basement Gallery - Neroli.....434 1598
.....46 Nen St.....0211 511 647

Building & Construction

- ▶ **David Ovens Building Contractor Ltd**
.....Licensed B/P.....027 481 9424
- ▶ Curtins Concrete Coating 027 436 9209
.....Making concrete great again!

Budget Advice

- ▶ Family Works N.O. Budget Advice.....
.....Oamaru.434 6196....027 365 2959

Chiropractor

- ▶ Ron Sim Chiropractor434 8784
.....23 Eden St, Oamaru

Citizens Advice

- ▶ Citizens Advice Bureau N.O....434 9743
.....0800 367 222

Cleaning

- ▶ A1 Spic n' Span.....434 5534
Almost ALL Cleaning027 737 8423
- ▶ A+ Services.....0800 155 166
Window, gutter & carpet cleaning 027 714 4812
- ▶ Headstone Cleaning Service 021 026 26115
- ▶ Oamaru Chimney Sweep.....434 8025
.....027 436 1315
- ▶ STA Cleaning & Laundry Services.....
Regular, one-off, moving out cleaning.0204 135 5893

Contracting

- ▶ Lifestyle Block Contracting..0276324264
Paddy.....Baling, Topping, Cultivation

Counsellor

- ▶ **Amanda Acheson NZCCA 027 521 1187**
- ▶ Julie Hales021 071 1030
TTC, RCN, Cert Alcohol & Drug Counselling, DAPAAZ
- ▶ Kaye Mattingley434 1188
.....DipGrad Otago NZRSW, MANZASW
- ▶ Orwell Street Counselling.....434 6168
.....022 192 4415

Curtains & Tracks

- ▶ Curtain, Blinds, & Track Installation
.....027 653 0984

Dispute Resolution & Mediation

- ▶ Marian Shore - Mediation Waitaki
.....434 7533.....027 724 1130

Drain Jetting & Camera

- ▶ AG Plumbing..Ange.....021 434 950
.....see our facebook page

Driver Training

- ▶ RBM Driver Training & Motorcycle Rental
.....439 5355

Dressmakers

- ▶ Alterations, repairs & sewing..434 7793
.....027 284 9994
- ▶ Robinson Gray021 173 6161
.....Tailored clothing & alterations

Electricians & Appliances

- ▶ Glenn Taylor Electrical434 7282

-027 522 1012
- ▶ Whitestone Appliances - Repairs 434 6810
.....021 366 446

Funeral Directors

- ▶ Wall's Funeral Services.....434 8266
.....49 Humber St

Gardening

- ▶ Michael Butler.....434 9863
Experienced & qualified.....027 273 4824

Glass Installation & Repairs

- ▶ Goldies Glass & Windscreens..434 8701
24 hrs...77 Humber St.....A/H 027 433 2258

Hairdressing

- ▶ Kut Loose Hair Design.....434 8950
.....Unisex Salon, 24 Wear St

Health, Beauty & Massage

- ▶ Acupuncture & Massage.....434 9663
...(ACC) Rick Loos (NZRA) @ Health 2000
- ▶ New Intuitive Healing Massage
.....@ Health 2000, Jilly.....027 464 3687

Immigration Advice

- ▶ Jojan McLeod027 675 7600
.....Immigration Waitaki

Insulation

- ▶ Dunbars Insulation027 789 8788
.....local and affordable
- ▶ Living House Best Prices....0800 434 600

Joinery

- ▶ Rycole Joinery Custom designed kitchens
.....434 5012.....027 276 2866

Lawn Mowing

- ▶ Crew Cut Large Lawns & Rural mowing
.....Paul Houlahan 021 331 261

Meth Testing

- ▶ A+ Services Meth Testing...027 714 4812
.....0800 155 166

Mobile Travel Broker

- ▶ Jannine Hore439 4230
The Travel Brokers - member of Helloworld
- ▶ Lynne Sinclair, NZ Travel Brokers.....
Cruising/Holiday Packages.....432 4172

Painters & Decorators

- ▶ 0800 Mr Painter0800 677 246
.....027 437 4367
- ▶ ADF Painting & Decorating.....
.....03 431 2771.....021 393 414
- ▶ Brian Charles Painter & Decorator
.....434 7006.....027 283 8920

Pest Control Services

- ▶ Spider proofing & Pest Control
.....027 714 4812.....0800 155 166

Pets

- ▶ Oamaru Pet Supplies.....434 7096
- ▶ Suds & Paws for dog grooming 434 5957
- ▶ Paws Awhile Boarding Cattery 434 1296
- ▶ Puppy Love Grooming....021 101 7858

Plumbers

- ▶ Foley Plumbers Oamaru.....434 2330
.....Tom Palmer.....0800 303 530

Podiatrist

- ▶ Simply Feet Podiatry.....437 9025
.....316 Thames Hwy, open Mon-Fri

Printing & Photocopying

- ▶ Oamaru Print & Copy434 9651
.....info@perfectprint.co.nz

Removals & Storage

- ▶ Mount Cook Moving & Storage Ltd
.....(Est 1989).....027 4341289

Tiling

- ▶ Lakeland Tiling.....Shane..027 312 2017
.....Kitchens & Bathrooms - No job too small

Transportation & Rental Vehicles

- ▶ Driving Miss Daisy434 8421
.....Appointments, Dunedin & Timaru Hospital, Shopping
- ▶ Oamaru Transfers434 9506
.....Hospitals & Airport transfers (Merv Aitcheson)
- ▶ Oamaru - Dunedin/Hospital Shuttle.....
Door to door service.....434 7744

Training

- ▶ RBM Motorcycle Rental & Driver
Training439 5355
- ▶ Smash Palace.....433 1444
.....Cars, Vans, Bicycle Hire & Shuttle Service

Vehicle Servicing & Repairs

- ▶ Ludemann Motors.....03 434 0291
.....6 Main St, Weston

Window Tinting

- ▶ Tint a Window.....0800 368 468
.....www.tintawindow.co.nz

Now Available! Block Adverts

63x32mm for little as \$20

Ph 4349651 or email telegram@oamaru.net.nz

Design your own
adverts online at

www.oamaru.net.nz

"Select SHOP OAMARU"

OAMARU 108 NET DOT NZ

A free \$45 business listing

on the Oamaru.net.nz website
with every \$135 Phonelisting booked
before the New Year. t's & c's apply

Phone 434 9651



3C Computer Services

23 Royal Arcade, Timaru 7910 149, Thames Street, Oamaru 9400



Computer Services Windows Apple Android

- New PC setup : Installation - Data Transfer - Setup
- Existing System : Repairs - Services - Solutions
- Email : Setup - Transfer - Backup
- Program Support : Office - Antivirus - Account Software
- Printer : Installation - Support - Service



Business Solution

- Complete IT System Setup & Monitoring
- High priority unlimited support
- Onsite support & Quick remote support
- Network Support - Wired/Wireless/Wifi
- Very affordable monthly cost



Phone Repairs: iPhone Android

- iPhone : Screen Replacement - Battery - Other
- Android : Samsung - LG - HTC - Other
- iPad iMac Laptop Screens
- Tablet Screens & Services
- Laptop Batteries & Accessories - RAM, SSD drives



Software Solution

- Microsoft Office - Email - Outlook
- Antivirus & Security Software
- Accounting Package : Myob, Payroll, Xero
- Farm Software : Find my cow, Cow GPS



3C Computer Services

23 Royal Arcade, Timaru 7910 149, Thames Street, Oamaru 9400

Ph : 027-75-6666-1 Office : 03-684-5055

3C Computer Services

www.3cnz.com

