

Need a Number?

Visit www.oamaru.net.nz

Oamaru The Telegram

100% locally owned

8,000 homes weekly

17th March 2020

Phone 434 9651

Issue 482



LINDSAY WHYTE
Painters and Decorators Ltd
50 Years Experience Master Painter
FREE PHONE 0800 242 8611

- Interior
- Exterior
- Wallpapering

CALL NOW!



Some days it would seem Winter has arrived - then the sun arrives and reminds us it hasn't.. Although I am glad the local shops have started stocking warmer clothing to keep us all warm. Winter is a great time of year for sitting by the fire and reading a good book. Do you have any good books you would like to recommend? If you do, please send us an email with the title, author and a couple of sentences about the book and why you enjoyed it. We would love to share them with everyone. *Enjoy your week, regards The Telegram*



North Otago Plunket
LYCRA
for littlies
SPIN•A•THON

Support Plunket! It's easy!
Teams or individuals can enter - lots of options:
12 hours, 6 hours, even 1 hour, come along.
If you can't get along you can always make a donation.

Register online
www.sporty.co.nz/waitakirc/Plunket-Lycra-for-Littlies-SpinAthon
or <https://www.sporty.co.nz/waitakirc> and follow the links
Donations to 01-0964-0028075-00- reference "Plunket"
(or drop your donation into the Rec Centre)

Saturday 28 March, 2020, 6am - 6pm
Waitaki Community Recreation Centre

Fire Wood



Free delivery Waimate to Oamaru 3m³/6m³ loads
Stacking available at extra cost

Unseasoned (green) Dry (when available)

Pine \$50 p/m ³	\$60 p/m ³
O.M.P \$55 p/m ³	\$75 p/m ³
Macro \$65 p/m ³	\$85 p/m ³
Bluegum \$75 p/m ³	\$95 p/m ³

Call Karl 027 629 7664

Get in now and avoid winter prices
Qualified tree felling, portable mill available,
macro timber sales

New Zealand Petfoods

Walk your DOG



Ph. 434 8484 - 16 Ouse Street

SOUTHERN WIDE REAL ESTATE

WE HAVE MANY BUYERS LOOKING TO BUY IN
HAMPDEN.

PLEASE CALL CLIFF OR GLENDA IF YOU ARE THINKING OF
GOING TO THE MARKET

NO OBLIGATION - APPRAISALS AVAILABLE



Glenda Meek
Residential / 027 728 2876
glenda.meek@southernwide.co.nz



Cliff Meek
Residential / 027 432 3331
cliff@southernwide.co.nz

225 Thames St, Oamaru Ph 03 434 7422 www.southernwide.co.nz SRM REALTY LTD LICENSED REAA 2008

Goldies Glass Ltd

24 hour glass service

Phone the experienced professionals

Insurance Work Welcome
03 434 8701 | 027 433 2258
77 Humber St, Oamaru

OAMARU LANDSCAPING SUPPLIES

**SMALL SELECTION OF 2019
FRUIT TREES ON SALE ½ PRICE \$20**

QUINCE, PEARS, PLUMS, APPLES.

ROSES ON SALE

\$20 BUSH, STD'S \$32.50

WATER LILY PLANTS SALE \$35

INDUSTRIAL PLACE 1K RD PH. 03 437 1888

OPEN: MON - FRI 9AM - 5PM & SAT 10AM - 3PM

FOR ALL YOUR GARDEN
& LANDSCAPE SUPPLIES
**NURSERY
SOIL
WOOD
COAL**



Entering into the ripening season, things are dry here in North Otago - watering should be number 1 on the gardening list to keep plants, Shrubs and trees from becoming dehydrated. Acer, (Japanese Maples) can be lost by becoming too dry during Autumn.

I have been seed collecting and sowing to get young seedlings well on before the ground cools. Summer annual seeds need to be saved in a dry place until time to sow in Spring, but seeds from hardy Spring flowering plants can be sown now - Pansy, Viola, Polyantha, Delphinium, Antirrhinum (Snapdragon), Wallflower, Cyclamen, Stock, Sweet pea, Primrose and Calendula.

Cuttings: Now until the end of Autumn is the perfect time to take stem cuttings from Shrubs and woody plants. Take semi hard wood cuttings - not too hard and not too floppy. These will still contain the necessary energy to push out roots to continue growing. Cuttings can be left in water containing willow leaves and branches overnight, which will stimulate cuttings as hormone rooting powder does. I use wet sharp river sand or crusher dust with a little compost added for cuttings to push roots into. Cuttings taken now, will need to be taken through the Winter before being potted, so protection from the cold will be needed when days and nights are cool. If you do not have a glass or tunnel house, a cold frame is good protection. A raised frame covered with heavy plastic will do the trick and when it is very cold, a layer or 2 of frost cloth can be added.

Rose cuttings taken now will give good results. Take a cutting on a slant from a stem that has flowered - approx 15 cm long from a mid section with at least 3 growth nodes - 2 of these should be buried when cuttings are planted. Pop cuttings into water as soon as cut - willow water as above if you can. Plant cuttings close together in a pot of wet river sand with good drainage. Roses are grafted these days, but some Rose enthusiasts consider cutting grown Roses to be the stronger growing.

Planting a new garden: March is definately a great planting month If planting a new garden. Garden outlets are well stocked with Shrubs, trees, plants and Bulbs The warm ground is perfect now for new plantings to make some growth, harden and settle in for the first Winter.

Bulbs: I notice Spring Bulbs beginning to move up through the ground and those still below the dirt, I sometimes dig up by mistake - even Trillium Bulbs are showing pointed new growth, so be careful while working around them.

Lawns give you an abundance of garden mulch if weed spray free. Spread clippings evenly over moistened gardens to hold moisture in. Spread too thickly, it will form a shield to suppress moisture.

Veg: Pumpkins ripening, Corn cobs ready, Beans in abundance and while we plant out our next leaf crops, the white Butterflies are in full force laying eggs on them as a food for their caterpillars. I cover newly planted veg seedlings with shade cloth, which seems to restrict the view and still let enough light in for continued growth. I also have lengths of white Grape netting - this being a slightly heavy net, works best stretched across a frame not allowing any gaps to let those determined Butterflies in.

Fruit: Home Gardeners will be harvesting stone and pip fruit as well as Grapes, which should have reached high sugar levels with the heat we have been experiencing. Once picked, Grapes do not continue to ripen, so it pays to do the sweet test before picking a sour bunch.

Autumn attention to Fruit trees, 1. Deep watering at the end of fruiting, 2 to 3 inch soaking, (not just enough to wet the surface.) 2. Keep the base of trunks clear of grass and leaves. 3. No fertiliser in Autumn, trees need to harden for Winter 4. Wait until Spring before all major pruning. Cheers, Linda.

Oamaru Based Tree Specialist



Tree Care, Difficult Tree Removals,
Height Reduction, Hedge Trimming,
Trees Pruning, Stump Grinding & Chipping.
Qualified Arborists

Matt Slater 027 241 3343 03 437 1440
treesculptotago@hotmail.co.nz Oamaru



Central Podiatry Limited

Nathan Dickson

Cost \$44 pension or community service, house calls available
Quality treatment of all foot and lower limb conditions
Community House, Oamaru Ph: 434 8862

Trees Need Trimmed?



KEA TREEWORKS
Certified Arborists

Pruning - Removals - Chipping

Chris Conklin 027 484 3395

Jack Vaughan 021 582 300

keatreeworks.co.nz

OAMARU + PHARMACY

It's your Pharmacy

Let's talk about COVID-19

COVID-19 is a new illness that can affect your lungs and airways. It's caused by a type of coronavirus. There are simple steps you can take to protect you and your family/whānau. The symptoms of COVID-19 are: a cough, a high temperature (at least 38°C), shortness of breath.

These symptoms do not necessarily mean you have COVID-19. The symptoms are similar to other illnesses that are much more common, such as cold and flu. Shortness of breath is a sign of possible pneumonia and requires immediate medical attention. We don't yet know how long symptoms take to show after a person has been infected, but current World Health Organization assessments suggest that it is 2–10 days. If you have these symptoms and **have recently been to a country or area of concern, or have been in close contact with someone confirmed with COVID-19**, please telephone Healthline (for free) on 0800 358 5453 or your doctor immediately.

COVID-19, like the flu, can be spread from person to person. When a person who has COVID-19 coughs, sneezes or talks, they may spread droplets containing the virus a short distance, which quickly settle on surrounding surfaces. You may get infected by the virus if you touch those surfaces or objects and then touch your mouth, nose or eyes. That's why it's really important to use good hygiene, regularly wash and thoroughly dry your hands, and use good cough etiquette.

Prevention – how to protect yourself and others: Cough or sneeze into your elbow or by covering your mouth and nose with tissues. Put used tissues in the bin or a bag immediately. Wash your hands with soap and water often (for at least 20 seconds). Try to avoid close contact with people who are unwell. Don't touch your eyes, nose or mouth if your hands are not clean. Avoid personal contact, such as kissing, sharing cups or food with sick people. Clean and disinfect frequently touched surfaces and objects, such as doorknobs. Stay home if you feel unwell.

• Call Healthline on 0800 358 5453 if you have any symptoms and have been to any countries or territories of concern or have been in close contact with someone confirmed with COVID-19.

Information taken from: www.health.govt.nz/our-work/diseases-and-conditions/covid-19-novel-coronavirus/covid-19-novel-coronavirus-health-advice-general-public

What do you need to be able to enjoy the retirement you've earned?

Health.

If chronic pain or other health concerns are preventing you from enjoying the activities you love, book a health assessment consult at Acupuncture Oamaru now.

ACUPUNCTURE
OAMARU

www.acupunctureoamaru.com

149 Thames St Oamaru

0223765960



North Otago Motor Group



Approved Insurance & Private Work Welcome

(03) 433 0145 - 24-30 Severn St

Pre-Approved

FMG
Advice & Insurance

Smith & Smith
SINCE 1878

Collision Repair
ASSOCIATION
CRA
LICENSED
Collision Repairer
the benchmark for quality
www.colrepair.co.nz

Approved

STATE

ami

iag

N4

Lumley

DEVOS

DANCE EVOLUTION STUDIOS

**Opening Soon
in Oamaru**

**watch this
space....**

Savings of up
to \$2300* across
all HEARING AID
technology
levels



Purchase hearing aids in March and get a
FREE UPGRADE to the next technology level.
Modern, discrete devices with options such as
phone connectivity and rechargeability.

Call now for your free consultation.

Dunedin Clinic 227 Moray Place 03 471 5866

Mosgiel Clinic 127B Gordon Road 03 474 1947

Oamaru Clinic 157 Thames Street 03 433 0482

We help people hear better



**Your local and independent
hearing experts**

0800 547 836

www.audiologysouth.co.nz

*Applies to selected hearing aid models, dependent on ear and hearing loss type.
Not to be used in conjunction with any other Audiology South promotion.

**AUDIOLOGY
SOUTH**
Hearing Health Professionals

OAMARU SPORTS & OUTDOORS

NEW SEASON SHOES

AVAILABLE NOW



SAVE Cut this out for
10% off*
selected **asics**

* conditions apply

EXP: 28.3.2020

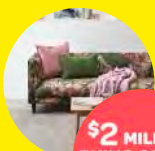


carpetcourt

Massive
Madness
flooring

SALE

www.carpetcourt.nz



\$2 MILLION
RHINO CARPET
CLEARANCE

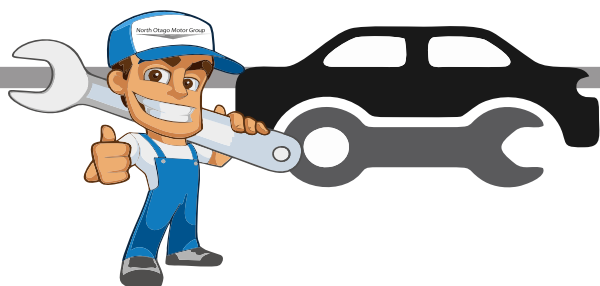


18
MONTHS
No Interest &
No Payments**



10% to
50% OFF
Selected
Flooring*

*Offer is valid until 29/03/20 on selected ranges and selected colours or while stocks last. Carpet is sold in lineal metres. Stock will vary by store. Quantities are limited and no holds or reserves on clearance product allowed. Clearance items are sold on an as-is basis without a manufacturing warranty however the Consumer Guarantees Act will still apply. We reserve the right to adjust prices without notice if necessary and we reserve the right to correct any errors. **Q Card lending criteria, fees, terms and conditions apply. See in store for full details.



Servicing Vehicles
for over 25 years

North Otago Motor Group

6 Qualified Technicians

W.O.F.

TYRES

SERVICING

ALL MAKES

The only qualified Toyota Specialist in town
Loan Vehicles available

03 433 0144

From start to finish...

WE DO IT ALL!

PlaceMakers®

BATHROOMS



Wendy, Amy and the team
have over 40 years local
experience in Bathrooms

They can help you with

EVERYTHING

from start to finish

Contact them today!

03 433 0460

OAMARU + PHARMACY

Your Pharmacy

LINDEN LEAVES
NEW ZEALAND



— CELEBRATING 25 YEARS —

Birthday Sale!

25% OFF LINDEN*
LEAVES

*Terms and conditions apply. See instore for details.

Promotion ends 29th March 2020

Oamaru Pharmacy, 171 Thames st, Oamaru

Ph. 03 434 8741, Mon-Fri 8am-6pm, Sat 9.30-5pm, Sun 10:30 - 4:30pm

www.pharmacy-nz.com



20% OFF each

USE TOGETHER TO BEAUTIFY FROM THE INSIDE

179 Thames Street

Mon-Fri 8:30am to 5:30pm, Sat 9:30am to 1pm

Nail your Immune Health with ZINC

Your immune system is made up of a network of cells, molecules, tissues and organs working together to protect your body. Zinc is essential mineral in your body, with 90 percent of zinc found in your skeletal system. It is required for many enzyme and bodily functions, and is essential for growth and physical development. Zinc is necessary for the normal function of your immune system and even mild zinc deficiency can depress a healthy immune response in your body.

If you are low in zinc, you may experience; *Lack of mental clarity and focus, Thinning and dull hair, Brittle nails, Acne, Adrenal fatigue, Poor wound healing, Ongoing loose bowels, Poor immune function.*

If you experience any of these signs then HealthZone Zinc Zone is for you. Zinc aspartate is necessary in the citric acid cycle - the centre of energy production within the cell - as aspartic acid must be present in every cell in your body.

HEALTHIER SKIN, HAIR AND NAILS

Pair HealthZone Zinc Zone with HealthZone Skin, Hair & Nails Zone for optimal support. Skin, Hair & Nails Zone supports the maintenance of silica levels in your body. Silica supports collagen production to maintain healthy hair, skin and nails and provides help with weak or brittle nails, brittle and dull hair, split ends, loss of skin elasticity, healthy bones and strong teeth.



RealFood Pantry

Go Nuts - They are good for you!

Nuts have great health benefits, they are..

Packed with protein and iron. Loaded with vitamin E and B-complex vitamins, Rich in minerals - zinc, potassium, calcium, copper, magnesium and manganese.

Packed with unsaturated 'healthy' fats Gluten Free! They are also high in kilojoules so keep an eye on portion size but eaten as part of a balanced kilojoule controlled diet can give a nutritious boost to your health.

Here at RealFood pantry we stock a great range of nuts, buy as little or as much as you need from our self-serve containers, eat raw, roast or grind down into a nut butter - Real delicious! *Almond, Brazil Nuts, Cashews, Hazelnuts, Macadamia Nuts, Peanuts, Walnuts.*

Waitaki Interiors - Unique Decorative paint

Annie Sloan trained as a fine artist and turned to decorative work after university in the 70's. By 1987 Annie wrote the phenomenally successful book, *The Complete Book of Decorative Paint Techniques*. When Annie Sloan developed Chalk Paint™, she revolutionised the world of decorative painting. Frustrated with the lack of paint options available, she created her own signature paint – with its remarkable versatility and ease of use – for everyone from the novice to the professional to enjoy. Annie developed her now famous Chalk Paint™ in 1990 in answer to the need she had for a versatile paint which would have many uses. She chose the name 'Chalk Paint™' because it was suggestive of its very matt - almost chalky - finish. Chalk Paint™ adheres to most surfaces and creates gorgeous results quickly and easily. Use it for a textured or distressed finish, a smooth contemporary look or even a wash. It very rarely requires any preparation, and can be used indoors or outside on just about any surface – from timber to metal, and matt plastic to terracotta. It can revitalise old furniture, walls, ceilings and floors with ease and can even be used on fabric. With a colour palette inspired by 18th and 20th Century décor and design you can easily mix the colours together to extend the range. Use flat brushes for a smooth look or bristle brushes for a more textured aged look. Chalk Paint™ is non-toxic, water-based, contains no lead, has very low volatile organic compounds ('VOCs') and has no odour – the aim is to make all products as eco-friendly as possible. Chalk Paint™ Wax is the perfect partner for Chalk Paint™. It is used for protection and durability and to give a beautiful mellow finish to painted furniture, cabinets and walls. You can easily coat Chalk Paint™ Wax with a brush or cloth. It can be used to touch up any marks and is water-repellent too. "There's no need for priming and sanding... you can get straight to the fun bit" says Annie. Why not rejuvenate your old furniture or family heirloom and make it beautiful again to bring it into alignment with your current interior décor & enjoy it for many more years to come.

learn to SURF

kakanui

0210 234 6451

LEARNERS PACKAGES AVAILABLE

Lessons available most days, please call for booking & lesson times.

ADVANCED LESSONS \$50
KIDS CLASSES \$25 (10+ years)

Ph 0210 234 6451
www.learntosurfkakanui.com
info@learntosurfkakanui.com



Lindsey Rusbatch has over 30 years experience surfing and is a qualified level 1 instructor approved by Surfing New Zealand

BOARD & WET-SUIT HIRE \$30 for 3 hours

LEARN TO SURF LESSONS



Fish Month!



Free
Heater with
every Tank
purchase*



**LifeStyle
EcoStyle**

* Conditions apply

Petshop - Training - Rehoming

Mon - Fri 9am - 5pm

Sat 10am - 4pm

2 Coquet St

(03) 427 0174

Havenwyck Pets

RHVD - Friend or Foe?

RHVD (Rabbit Haemorrhagic Disease Virus) otherwise known as Rabbit Calicivirus comes in three different strains, RHVD1, RHVD1 K5 and RHVD2. This is a virus which was introduced into New Zealand to aid in the control of wild rabbits, although this has been a benefit to the farming community our pet rabbits are at a high risk of contracting the Virus, even when they are located in towns and cities.

The Virus is spread from direct contact with wild/infected rabbits, from flies, fleas and some mosquitoes. We are also able to transport the virus on our clothing and shoes if we have been in contact with infected Rabbit Urine and Faeces. There is no cure only prevention - pet rabbits must be vaccinated annually to be protected. We have seen an increase in rabbit deaths in the Waitaki Region over the past month, there is often no obvious signs. To keep you pet protected please ensure your rabbit is up to date with Vaccinations, keep them away from the wild population and ensure good hygiene practices to reduce the risk of the virus spreading.

Come in and see me at Havenwyck Pets to discuss and find the best pet for you! Leanne Wreakes-Fallen. Dip.VN



**CENTRAL SOUTH ISLAND
HELICOPTERS LIMITED**



**The Professionals with over
30 years Local Experience**

**SPRAYING - FERTILISER APPLICATION - LIFTING
SURVEYING - PEST CONTROL - FIRE FIGHTING**

info@csihelicopters.co.nz - 03 439 5656

RENTALS

19 years Rental Experience in North Otago

- **8-12 Seater Vans**
- **Shuttle Trailer Hire**
- **Bike Trailer Hire**
- **Car Rental**

24 hours - 7 days

Rentals by the hour, day or longer

North Otago Motor Group



f North Otago Motor Group Rentals Vehicles

(03) 433 0146 – (0274) 872 048

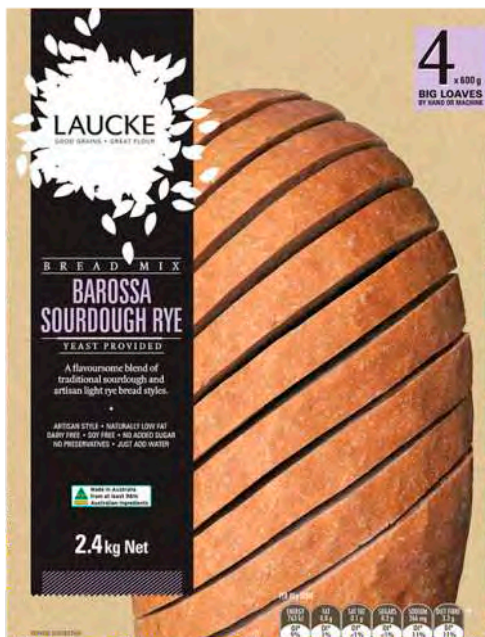
Conditions apply



Where Happiness is Homemade



A RANGE OF BREAD MIXES



10 Eden St, Oamaru

03 433 1433

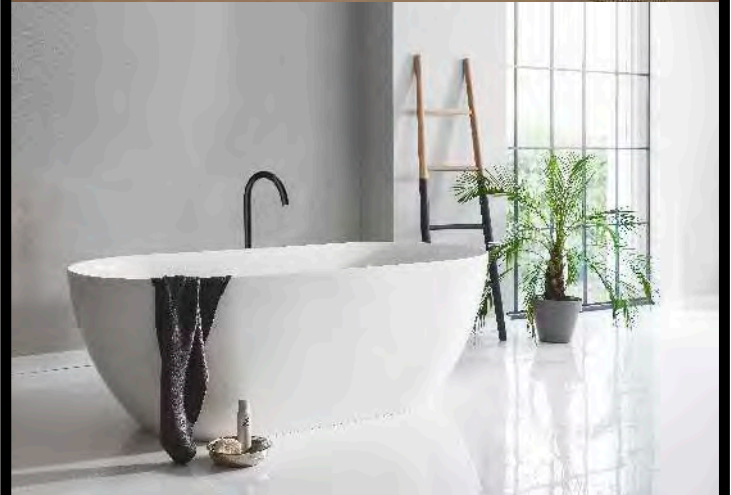
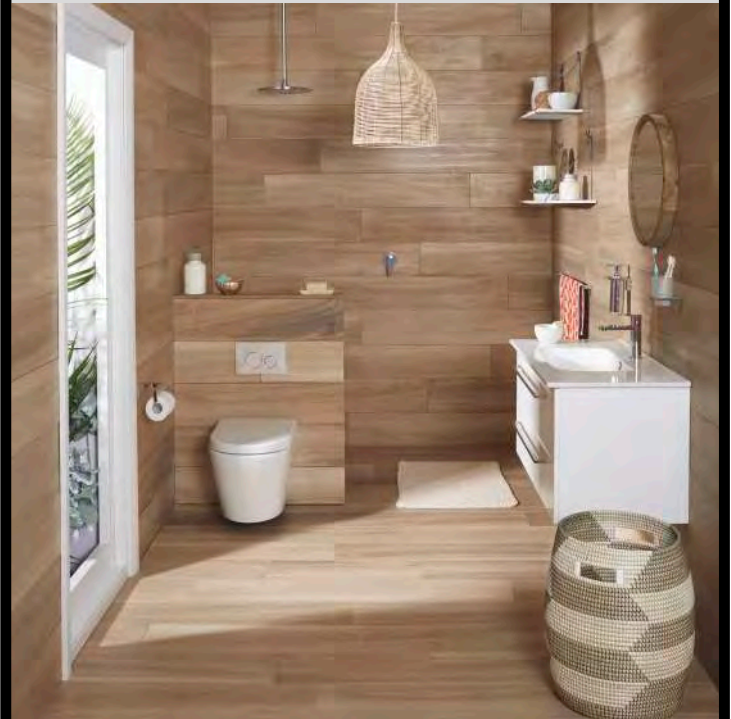
info@realfoodpantry.co.nz

Like us on Facebook



PlaceMakers®

BATHROOMS



Wendy, Amy and the team
have over 40 years local
experience in Bathrooms
They can help you with
EVERYTHING

from start to finish
Contact them today!

03 433 0460

Community Diary

Wednesday 18th

Excelsior Petanque Club; Ph 4372557 Wed & Sun 1-3 pm Behind Excelsior Rugby and Sports Club.

Free JP for certifying documents, affidavits, & declarations. 10-1pm at the Public Library.

North Otago Orchid Society meet at St John's meeting room 1:30pm.

Thursday 19th

Find out what the Living Wage is and why it is important. Join the next meeting of The Living Wage Committee for Oamaru. 12:30pm at Steam Café, Thames St. The meeting is for one hour.

Migrant meet and share, 10:30am at the Opera House. A place for Migrants to build connections & learn about life in Waitaki. Ph Maria 021 066 5143.

North Otago Asthma Society Respiratory Exercise Class, 10am, St John Hall, Ph 4372673.

Oamaru Karate Club 2020; Now Started, St Pauls Church Hall, **Thursdays & Mondays** 7pm; Enquiries Jan 027 4348015.

Whitestone Taekwondo Club; Tue & Thu 6pm to 8pm at the Waitaki Rec Centre, Ph 0211721311.

Friday 20th

AA Meeting, Orwell St Chapel, 12noon, Ph. 027 722 7818 or 021 026 86128.

Excelsior Squash Club; Centennial Park, Ph 02102323729, Monday & Friday 6pm

Meadowbank Bowling Club; Bowlers & non-bowlers welcome. 14 Conway St Social bowls 2pm.

Newcomers Coffee Group at 10am at either the Opera House or The Brydone. Ph 0272428643

North Otago Darts; Ribble St Hall, Housie every Friday Night. 7:30 pm Start, 40 games plus Super House and Raffles.

North Otago Grey Power social group 2.30 Lagonda Tearooms to socialise, share information, ask questions. Non-members welcome. Phone Daphne 4346249

Summer Indoor Bowls; 7 p.m. at Centennial Park, all welcome ph. Denise 4371704 or Cliff 4371999.

Saturday 21th

The Healing Team; Pray for healing, St Mary's Church 2-3pm.

Nicol's Blacksmith Shop, Duntroon. Open with Blacksmiths working Sat/Sun 10am-3pm, courses available, booking essential. Find us on Facebook.

Sunday 22nd

AA Meeting, Orwell St Chapel, 6pm, Ph. 0277 227818 or 437 2337.

Reformed Church Oamaru, 4 Eden St, 10.30 am. and 5pm. True to God's Word.

Excelsior Petanque Club; Ph 4372557, Wed & Sun 1-3pm Behind Excelsior Rugby & Sports Club.

Healing Service; St Mary's Church (next to New World) 6pm. All Welcome.

Oamaru Spiritual Group; 2 Steward St – Blind Foundation Hall, 2pm for Service

St Paul's Church, Coquet St, service and kids club. All welcome, 10am.

Monday 23rd

Excelsior Squash Club; Centennial Park, Ph 02102323729, Monday & Friday 6pm

Happy Scoundrels Over 55 Ten Pin Bowling Club, 12:30pm, Galleon Family Complex. Ph. 4341463.

Meditation for Peace at the Plunket Rooms on Severn St, \$2 for room hire, 7.30-7.55pm Beginners intro & short meditation, 8.00 - 8.30 pm longer meditation.

Waitaki Woodturners; 1 pm at our clubrooms Oamaru Race Course & Tues 7pm. Ph 439 5795.

Tuesday 24th

AA meeting, Orwell St Chapel, 7:30pm, Ph. 4324191 or 4346888.

Age Concern Waitaki Gentle Exercise Programme for over 60's Orwell St Chapel Hall, at 1:30pm Ph. 4347008.

Craft & treasure market lots of crafts & pre loved treasures. Scottish Hall, 10 Tyne St, 10am- 2pm. To book a stall ph 0277069902 or 021 515 205

Waitaki Woodturners; meet at 1 pm at our clubrooms – Oamaru Race Course & Tuesday evening at 7 pm. Ph 439 5795.

AGM Notice

Oamaru Victorian Heritage Celebrations AGM Tue 24th Mar 2020 at Whitestone Funerals, Reception Lounge, 54 Weston Rd, 7pm. Nominations to be received in writing. members & public are welcome to attend, however financial members only eligible to vote. ovhcommittee@gmail.com

Waitaki Hospice Care Trust AGM – Tuesday, 7 April, 2020 @ 6pm. At North Otago Hospice Hub. All Welcome!

Waitaki Riparian Enhancement Soc; AMG Wednesday 25th March, 7:30pm Glenavy Hall, Guest speaker Jay Graybill, Gold coin donation at door. Supper to follow.

Riding for Disabled AGM; 1st April, 7pm Weston Church Hall.

Community Notice

Columba Scout Group; Keas (5-8 yrs) Monday 4.15-5.15pm, Cubs (8-11 yrs) Monday 6-7.30pm Scouts (11-14 yrs) Thursday 6.30-8.45pm, Venturers (14-18 yrs) Thursday 6.30-8.45pm at Columba Scout Den, Awamoa Park, 123 Perth St, Oamaru. *Scout Groups provide safe and nurturing environments for children and young adults to learn valuable life skills, have fun and develop their creativity through games, arts and crafts, challenges, indoor and outdoor activities and so much more. So come along and join in the adventure!* Contact Mary-Jane 022 300 96 90 for more information.

Indoor Bowls Oamaru Club; Severn St, 7pm opening night March 31st all welcome. Ph. 4372301 or 434 9678.

Oamaru Coffee Riders; Social riding group. fitness levels & cycle types including E-Bikes. Nobody gets left behind. Visit our Facebook page for info: Oamaru Coffee Riders, ph/txt 0211214627 'Activate Your Elder-Powers' a free seminar for curious life-loving women. Wed Mar 25th 10am-midday at The Chambers, The Opera House. Bookings essential. To find out more and register go to www.inspiringconsciencevolution.com/elderpowers.

For Free

Young Roosters now available from Fancy Bantam flock. Pekin mixes an assortment of nice colours. 8 weeks old, tame & friendly. Ph 437 1327.

For Sale

Dinghy Alloy 12foot 9.9 Johnston motor, on trailer with new WOF & Reg. \$1,000 Ph. 021 350957.

Fridge Freezer in very good order, Fridge at top \$225. **4 Piece Cane Lounge Suite** & 4 cane side tables \$125 the lots. Ph 437 1276 or 0274 902 005.

Paddys Pea-Straw; \$9 Conventional Bale; free delivery in town boundary Ph 027 632 4264.

Small Bales Hay; Ph (03) 431 3744.

For Rent

Long or Short term; Holiday Cottage, 3bdr, fully furnished, rural setting, Oamaru North. No pets or smokers. Ref required, \$350/wk. Ph 021 659 757

SUPER SPECIAL

6m - Split Pine - \$420

Free Delivery Oamaru*

Town Boundary and Farmers/Country.

WINZ Quotes are available

BUY NOW

10m @ \$65pm

*Free delivery within 1/2 hour of our yard.

Racecourse Firewood Ltd

027 966 3636

Classes and workshops

Ara Institute of Canterbury - Oamaru campus, 44 Humber St - Contact Ruth, 03 9406151, Administration & technology, business, retail and free computing courses including internet safety, online shopping, smartphones and apps.

Garage Sale

21st Sat 9am Virgil St, household furniture & garden goods.

Services

8-12 Seater Vans for hire, also Shuttle Trailer, Bike Trailer and Car hire available. Ph. 03 433 0146 or 0274 872 048.

Carpet/Vinyl layer specialising in second hand carpet & repairs. Dion 0223924852.

Experienced and innovative engineer available to build or repair any project, big or small. Your place or mine. 0274437142

Experienced gardeners available for gardening & pruning. Anything considered. Ph: 027 3199310





Long grass mowing, 4WD ride on mower brushcutter. Contract or hire. 0212409766.

Smash Palace, for rental cars/vans/bikes, car parts and shuttle service. Ph. 433 1444.

Raffle Results

Hampden School Raffle Winner; S. Halliwell Drawn by Hope & Associates Legal.

THAI FOOD

 BANGKOKRECIPE.CO.NZ 
 03 434 6245  220 THAMES ST.

BANGKOK recipe



Paul & the team are now at
7 Regina Lane North End
Over the rail lines and on your right. Ph: 03 437 0781

Book in for all your auto electric work including air conditioning.



PH. TOM 021 0233 2002 OR 434 3326

General indoor & outdoor repairs, fencing, decking, bathroom, kitchen renos & more...

Handy Phone Listings

Accommodation & Facilities

- ▶ Old Bones Lodge0274 894 999
- Hot Tubs/Sauna events & accommodation
- ▶ Holiday Home - Seaviews 'n Siestas
- Relax 10% off March-June 021 0827 0805

Acupuncture & Massage

- ▶ Rick Loos (NZRA)03 434 9663
- Acupuncture, Massage & Reflexology

Bricklaying

- ▶ Doran Brick 'n' Block027 516 5675
-437 0415

Building & Construction

- ▶ We Decorate Concrete 027 436 9209
-ugly & manky into Slick and Swanky
- ▶ David Ovens Building Contractor Ltd
-Licensed B/P.....027 481 9424
- ▶ Doran Brick 'n' Block027 516 5675
-437 0415
- ▶ Handyman Al's Maintenance & Repairs, qualified joiner.....027 221 1069
- ▶ MGM Handyman Services,
- Your professional handyman 022 3106294
- ▶ Wayne Nuttall Builders..... 437 2513
-027 434 3409

Carpet & Vinyl layer

- ▶ Dion.....0223924852
- specialising in second hand carpet & repairs
- ▶ Flooring Specialist ... free measure and quote
- in Oamaru township 021 727 498

Chiropractor

- ▶ Oamaru Chiropractic.....021 729 868
- Robert Brydges179 Thames St
- ▶ Ron Sim Chiropractor.....434 8784
-31 Essex St, Weston

Cleaning

- ▶ A1 Spic n' Span.....434 5534
- Almost ALL Cleaning027 737 8423
- ▶ A+ Services NZ Ltd.....0800 155 166
- windows, gutters and carpets..... 027 7144 812
- ▶ Oamaru Chimney Sweep.....434 8025
-027 436 1315
- ▶ Hoppys Cleaning Service ..0211327685
- Home cleaning service "OVENS & more..."

Contracting

- ▶ Lifestyle Block Contracting..0276324264
- Hay baling, Hedge cutting.

Counselling

- ▶ AYR St - Counselling027 6861849
- Kaye Mattingley...Dip. Grad.S.Sc. Otago.NZRSW. MANZASW
- ▶ Barbara Liffiton0211 807 366
-NZ RCpN, Grad Dip GT, Prov NZAC

Dental

- ▶ Oamaru Denture Clinic434 7560
- Reg Clinical Dental Technician, 4/6 Coquet St

Dressmakers

- ▶ Robinson Gray021 173 6161
-Tailored clothing & alteration

Driver Lessons

- ▶ XTO Driver training Ltd ..027 262 2031
-Driving Instructor/Driving Lessons

DVD and CD

- ▶ Oamaru Public Library.....433 0850
-cleaning service (resurface), \$5 per disc

Electricians & Appliances

- ▶ Robert Jones - Electrician. 027 445 0523
-434 0994
- ▶ Whitestone Appliances..... 021 366 446
-repairs.....434 6810
- ▶ VES - Valley Electrical
-Domestic & Commercial.....021 1177045

Entertainment

- ▶ Sylviane's Karaoke027 737 8360
- all occasions - bookings sylgal@msn.com

Flowers

- ▶ Flowerz 4 you434 9150
- all occasions, 151 Thames St...027 722 0443

Firewood

- ▶ Weston Firewood.....434 1085
-021 052 2877

Funeral Directors

- ▶ Walls Funeral Services.....434 8266
-49 Humber St

Gardening & lawns

- ▶ Ashley's Lawn & Garden Care.4372865
- Keeping your lawns in order.....0221086606
- ▶ CHANGEZ Landscape Property Services
- Steve..... 021 1148 900
- ▶ Crew Cut large lawns
- Paul Houllahan..... 021 331 261
- ▶ Roses, garden weeding, hedges & lawns
- Steven.....ph/txt...027 2609988

General Store

- ▶ Roses General Store021 515 205
- 9 Tyne St.....after hours...434 8285

Insulation

- ▶ Dunbars Insulation027 789 8788
-local and affordable

Interior Design

- ▶ Tracey Vickers Design 027 5420 215
- Upholstery and Furnishings03 439 5370

Immigration

- ▶ Immigration & Secretarial Services Ltd
- sylviane@isservices.nz.....027 737 8360

Joinery

- ▶ Inex Joinery/Kitchens 4 Less
- 335 Thames Hwy..... 4341533 or 021 1085500
- ▶ Rycole Joinery Custom designed kitchens
-434 5012.....027 276 2866

Mobile Travel Broker

- ▶ Jannine Hore439 4230
- The Travel Brokers - member of Helloworld
- ▶ Lynne Sinclair, NZ Travel Brokers.....
- Cruising/Holiday Packages.....432 4172

Painters & Decorators

- ▶ ACE Painters027 201 1918
-for all your painting needs.
- ▶ Don - Painter & Decorator - 25 years
-Call for a quotation027 2205403

Pets

- ▶ Suds & Paws for dog grooming 4345957
- ▶ Paws Awhile Boarding Cattery 4341296
- ▶ Puppy Love Grooming.....021 101 7858
- ▶ Shaggy Chic Dog Grooming
- 40 Ribble St 022 150 0395

Plumbers

- ▶ AG Plumbing.....021434950
-Blocked drains & CCTV Camera
- ▶ Cunningham Plumbing, Oamaru
-Plumbing & Drainlaying...0800 555 105
- ▶ Foley Plumbers Oamaru.....434 2330
-Sam Boswell.....0800 303 530
- ▶ Hiflo's Group 03 434 9873
-Plumbing, Heating & Rockgas

Professional Podiatrist

- ▶ Simply Feet Podiatry.....437 9025
-316 Thames Hwy, open Mon-Fri

Print

- ▶ Oamaru Print and Copy Ltd.....434 9651

Progress Coach

- ▶ Jenny Malcolm.....0274 477079
-Helping you progress forward.

Tiling

- ▶ Lakeland Tiling.....Shane..027 312 2017
-Kitchens & Bathrooms - No job too small
- ▶ Doran Brick 'n' Block027 516 5675
-437 0415

Transportation & Rental Vehicles

- ▶ Airport/Hospital, Oamaru Tour
-transfers (Merv Aitcheson)434 9506
- ▶ Driving Miss Daisy434 8421
-Appointments, Dunedin & Timaru Hospital, Shopping
- ▶ Oamaru - Dunedin/Hospital Shuttle
-Door to door service.....434 7744
- ▶ Smash Palace.....433 1444
-Cars, Vans, Bicycle Hire & Shuttle Service

TV Installation & Repairs etc

- ▶ Nathan Oakes TV, Sound, PC Install & Repairs.....0210 237 0646 or 03 437 2474

Upholstery

- ▶ Craft Upholstery.....Kirk 021 022 98678
- www.craftupholstery.co.nz

Window Tinting

- ▶ Tint a Window.....0800 368 468

NORTH OTAGO PHARMACY

WE WILL LOOK AFTER YOU

Open 7 days

Mon-Fri 8:30pm-6pm, Sat 9am-5pm

Sun 10am-5pm

213 Thames St Ph (03) 434 8246



Winner of

ASK A LOCAL

for the Shop with the best service in North Otago



The Smiley Team

North Otago Motor Group



2020 Holden Colorado LS
Automatic, Flatdeck,
Double Cab 4x4
\$45,490 (pw \$181)*

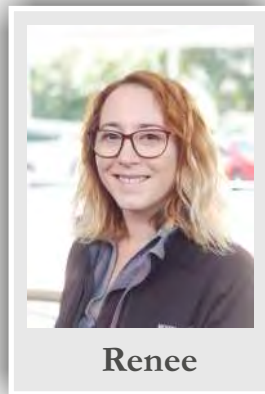


CAR OF THE WEEK
Mon-Fri 8am to 5:30pm, Sat 9am to 12pm

*Based on Classic Finance with a 20% deposit over 60 months at 9.95% interest. \$409.20 establishment fee and normal Toyota Financial Services lending criteria apply

Motoring with Renee

Hi! Renee here, Sales Manager for North Otago Motor Group. This Colorado LS is brand new and ready to use as a work or recreational truck. 3.5tonne tow rating, Carplay, and a limited slip diff. This no - nonsense truck is tuff and rugged for every day use with all the standard features you will need to make hard work seem easy. Come in and test drive today... We have over 35 years LOCAL experience in the industry and our team, Jamie, Martin and myself are here to help you. Being local has huge advantages for you. We are close to where you live; you can pop in and see us or we can come to you - plus we have a service and parts department. See us any day including Saturday 9am-12, or call us to make an appointment outside working hours. Loads of options of vehicles too, from small run-bouts, SUV's to 4x4's. Plus we can cover everything from finance, insurance and extended warranties. Have a great week.



Renee

(f [renee millin - north otago motor group](#)), Renee 0800660070



WALL'S
FUNERAL SERVICES



When you need us,
we'll be there.

Plan ahead with us, ease the burden on your loved ones by pre-planning.

Ensure your wishes are recorded and carried out.

Ensuring peace of mind

Funeral prearrangement simply means that by planning now, you can ensure that your funeral reflects your personal wishes.

49 Humber Street, Oamaru

P: 03 434 8266

E: admin@wallsfuneralservices.co.nz



Waitaki
Interiors

Beautiful Designs for your Home



EXCLUSIVE
STOCKIST

29 Thames Street, Oamaru, Ph. 434 7755

Teardrop Banners

OAMARU
print©

Now Available

146 Thames St, Ph 434 9651

