

# Need a Number?

Visit [www.oamaru.net.nz](http://www.oamaru.net.nz)

5th May 2020

Phone 434 9651

Issue 484



- Interior
- Exterior
- Wallpapering

## LINDSAY WHYTE

### Painters and Decorators Ltd

50 Years Experience Master Painter

FREE PHONE 0800 242 8611



Great to be back and great to see some have updated their website and online information - some have even added shopping carts for purchasing products from home. This is why we are starting a list of local businesses which are online. A great replacement for the community diary until things are back to normal.

See your friendly faces soon, regards *The Telegram*



### Havenwyck Pets *Creating Calm*

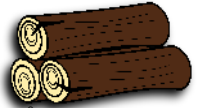
**During Level 3 of COVID-19**  
We will be open for product collection

You can ring for **Advice,**  
**Order Products**  
and we can **Delivery.**

**Monday - Friday 10am-2pm**

Petshop - Training - Rehoming  
2 Coquet St (03) 427 0174

## Fire Wood



Free delivery Waimate to Oamaru 3m<sup>3</sup>/6m<sup>3</sup> loads  
Stacking available at extra cost

Unseasoned (green) Dry (when available)

Pine \$50 p/m <sup>3</sup>	\$60 p/m <sup>3</sup>
O.M.P \$55 p/m <sup>3</sup>	\$75 p/m <sup>3</sup>
Macro \$65 p/m <sup>3</sup>	\$85 p/m <sup>3</sup>
Bluegum \$75 p/m <sup>3</sup>	\$95 p/m <sup>3</sup>

Call Karl 027 629 7664

Get in now and avoid winter prices  
Qualified tree felling, portable mill available,  
macro timber sales

## New Zealand Petfoods

### ORDER YOUR PET FOOD ONLINE!

Up to 20kg delivered for \$7  
within the Oamaru town boundary



See our website for details  
[www.nzpetfoods.co.nz](http://www.nzpetfoods.co.nz)

conditions apply

### SOUTHERN WIDE REAL ESTATE

#### HUGE PRICE DROP, MUST ACT NOW!

#### NEW MARKET PRICE



Walking through the front door, one side leads to a modern kitchen, dining area with a heat pump, with a slider door which flows out onto a large sunny deck. The other side of this is the main lounge which has a heat pump and wood burner. Off this is a second living area which is an ideal media room or office. The home boasts two modern bathrooms and 3 toilets. All five bedrooms are double all with wardrobes.

Outside is a wee man cave off the deck. The section is fully fenced and safe for the whole family. There is also a large double garage.

Web Ref #: SWOU12010

Daryl Siggleko  
Urban/Lifestyle  
027 520 0040  
[daryls@southernwide.co.nz](mailto:daryls@southernwide.co.nz)



Offers Over \$465,000

225 Thames St, Oamaru  
Ph 03 434 7422

[www.southernwide.co.nz](http://www.southernwide.co.nz)

SRM REALTY LTD LICENSED REAA 2008

## Goldies Glass Ltd

24 hour glass service

Phone the  
experienced professionals

Insurance Work Welcome

03 434 8701 | 027 433 2258

77 Humber St, Oamaru

# OAMARU LANDSCAPING SUPPLIES

**KEEP WARM KEEP SAFE,**  
Coal available \$14 - 30kg bags kai  
**DAILY 10-12PM OFFICE OPEN TO**  
**PURCHASE, WOOD!!!, NEW ORDERS POSTPONED**  
**FOR THE, NEXT 2 WEEKS, BACK – LOG TO BE CLEARED**  
**NURSERY – CLOSED DUE TO THE LOCK DOWN**

INDUSTRIAL PLACE 1K RD PH. 03 437 1888  
OPEN: MON - FRI 9AM - 5PM & SAT 10AM - 3PM

FOR ALL YOUR GARDEN  
& LANDSCAPE SUPPLIES  
**NURSERY**  
SOIL  
WOOD  
COAL



The splendour of Autumn is happening all around North Otago - however most of us will have to be content with the Autumn colours in our own area. Some will be bursting out of their bubbles a little more this week to start the new normal, but our own gardens will still be the safest place to get a productive workout for a while yet.

**Compost** is still being compiled here in our garden by layering Autumn leaves, grass clippings, ready to use compost, soft garden waste and stable / poultry manure. Nitrogen, phosphate, and potash in a natural organic form - all the elements required for compost.

**Leaf mulch /mould** is also a wonderful addition of humus for gardens and a simple process during Autumn. Leaves can be shredded with the lawn mower and spread along with lawn clippings as mulch around the garden, or leaves can be turned into leaf mould by heaping and containing in straw bale bins or similar. Layer leaves with grass clippings and soft garden waste, add water as layers fill bins, then cover with polythene or old carpet when full. Smaller amounts of leaf mould can be made in plastic rubbish bags or wool packs. Shredding leaves first for smaller amounts will quicken the process.

**New growth is not encouraged from now on**, as plants make seed and prepare for the dormant months, but here on the coast we like colour to continue in gardens by planting hardy annuals to brighten Winter. These can be boosted with fertiliser now to give them a good start. Not being able to pop out and buy fertilisers right now is a problem, but you may have pine needles, rotted sawdust or coffee grinds on hand to use as a boost for those acid loving Rhododendron, Azaleas, Camellias and Lemons. A link to home made fertilizers <https://www.thespruce.com/make-your-own-fertilizer-1388159>

**Continue to dead- head Dahlias** until frost collapses them. When this happens, cut back ensuring large thick stems are not left open to allow rain in to rot tubers. Dahlias can be dug out at the end of the season and stored away in a dry place, to be planted out after frosts in late Spring / early Summer. A topping of pea straw is good protection for Dahlias that over Winter are in well drained soil. The rain during the cold snap may have spoiled Roses. Remove rotting blooms and resist dead- heading or cutting back. Roses need to start making seed hips to help harden wood before Winter. However If growing in a warm sheltered spot, one last dead-heading will produce late blooms.

### Vegetables / Fruit /Herbs

Time to dig up and divide Rhubarb crowns, mixing in heaps of compost before replanting and a good time for sowing Spinach, Beetroot, Broad Beans and Snap Peas (if you have the seed.) **Strawberries** should still be flowering and fruiting . Keep water up and remove runners if too many - some can be left to make good roots if replacements are needed-3 years is usually long enough for a fruiting plant.

**Don't be tempted to prune fruit trees yet.** Wait until Winter when sap is down- pruning will encourage new growth if we get unseasonal warm spells.

**Herbs** can be cut back and divided now - top growth should still be fresh enough to dry, then rub to make mixed Herbs. Tie and hang or Lay out on newspaper in a warm dry place - Rosemary, Sage, Thyme, Mint, Oregano, Marjoram, Basil, Nasturtium leaves and flowers. Once completely dry and crispy, rub, remove stalks and store in a glass jar.

Cheers, Linda



## Oamaru Based Tree Specialist



Tree Care, Difficult Tree Removals,  
Height Reduction, Hedge Trimming,  
Trees Pruning, Stump Grinding & Chipping.  
Qualified Arborists  
Matt Slater 027 241 3343 03 437 1440  
treesculptotago@hotmail.co.nz Oamaru

## BATTERY AUTO ELECTRIC

Keep Safe, we are open for your  
**Winter Battery** needs and more!  
7 Regina Lane North End

**WINTER BATTERIES**

Ph: 03 437 0781

Come see us over the rail lines for all auto electrical work!

**Rose's General Store**

During Alert Level 3  
**Open 10am - 2pm**  
Contactless payment  
and pickup available  
Free delivery - Oamaru and Weston.  
Order online or by phone  
[www.rosesoamaru.co.nz](http://www.rosesoamaru.co.nz)  
Ph 021 515 205 or A/H 434 8285  
Wendy Simpson -Independent Distributor

**Rawleigh's**  
HEALTHCARE  
"QUALITY HEALTHCARE SINCE 1889"



General indoor &  
outdoor repairs,  
fencing, decking,  
bathroom, kitchen  
renos & more...

PH. TOM 021 0233 2002 OR 434 3326

North Otago Motor Group

OAMARU

## WE'RE OPEN BUT WITH A DIFFERENCE

We are continuing to meet your motoring needs from Tuesday 28th April.

We are open Mon-Fri 8am-5pm during Level 3.

All of the services we offer are available to you in a safe, contactless way.

We have introduced contact tracing, social distancing, and sanitisation procedures to ensure everyone's safety.

We will continually strive to make vehicle ownership and purchasing easy for you.

We ask that you please phone us on **03 433 0135** prior to your visit.

- Admin/Office is available with staff working onsite.
- Service, Panel, and Parts all have contactless service available.
- Under Alert Level 3 we are unable to host you inside our showroom but our Sales team is available via phone and email.

**Contact us to make  
an appointment,  
or to find out how  
we can help you.**

Thank you for your support  
we look forward to seeing you soon.

*From The Team at North Otago Motor Group*



email: [admin@nomg.co.nz](mailto:admin@nomg.co.nz)

web: [www.nomg.co.nz](http://www.nomg.co.nz)

**03 433 0135**



*Where Happiness is Homemade*

## PICK UP READY PACKED BAKING MIXES




- Lollie Cake
- Fruit Cake
- Scone Mix
- + Many more

**We are open**  
under level 3 conditions

10 Eden St, Oamaru  
03 433 1433

[info@realfoodpantry.co.nz](mailto:info@realfoodpantry.co.nz)

Like us on Facebook 

# Trees Need Trimmed?



**KEA TREEWORX**  
Certified Arborists

Pruning - Removals - Chipping

Chris Conklin 027 484 3395

Jack Vaughan 021 582 300

**keatreeworks.co.nz**

## OAMARU + PHARMACY

*It's your Pharmacy*

### Let's talk about Stress

Stress, in everyday terms, is a feeling that people have when they are overloaded and struggling to cope with demands. These demands can be related to finances, work, relationships, and other situations, but anything that poses a real or perceived challenge or threat to a person's well-being can cause stress. What is stress? Each person responds to stress in a different way, but too much stress can lead to health problems. Stress is the body's natural defense against predators and danger. It flushes the body with hormones to prepare systems to evade or confront danger. When we are faced with a challenge, part of our response is physical. The body activates resources to protect us by preparing us either to stay and fight or to get away as fast as possible. The body produces larger quantities of the chemicals cortisol, adrenaline, and noradrenaline. These trigger an increased heart rate, heightened muscle preparedness, sweating, and alertness. All these factors improve the ability to respond to a hazardous or challenging situation. Factors of the environment that trigger this reaction are called stressors. The more stressors we experience, the more stressed we tend to feel. Stress slows normal bodily functions, such as the digestive and immune systems. All resources can then be concentrated on rapid breathing, blood flow, alertness, and muscle use. A heightened state of alertness prevents us from having a restful sleep. How we react to a difficult situation will affect how stress affects us and our health. A person who feels they do not have enough resources to cope will be more likely to have a stronger reaction, and one that can trigger health problems. A persistent negative response to challenges can have a detrimental effect on health and happiness. There are three different levels of stress, Acute stress is short-term and is the most common way that stress occurs. It is often caused by thinking about the pressures of events that have recently occurred, or upcoming demands in the near future. Episodic acute stress affects people who frequently experience acute stress, or whose lives present frequent triggers of stress. Chronic stress is the most harmful type of stress and grinds away over a long period. Chronic stress can continue unnoticed, as people can become used to it, it can become part of an individual's personality, making them constantly prone to the effects of stress regardless of the scenarios they come up against. Developing strategies to recognise and deal with stress can prevent or reduce its negative effects. There are many approaches to managing, relieving or coping with stress. These include exercise, dietary changes, relaxation, stress management courses, counselling and medications. If you need further information and support about dealing with stress consult your GP or practice nurse. *Or one of our Pharmacist's instore at Oamaru Pharmacy. The team is always ready to help with friendly and knowledgeable advice.*

### Letter to the Editor

*Just a thought, Do your readers know now that the libraries are closing there is an app they can use called Borrow Box that you down load chose your library and add the number off your library card and you can then borrow ebooks from the library. Jan Law, [www.oamarubasilica.org](http://www.oamarubasilica.org)*

# Driving Miss Daisy Oamaru - we're there for you

We can help with:



- Grocery shopping
- Collecting and delivering prescriptions
- Medical appointments
- Deliveries - eg take home meals

We maintain strict MOH COVID-19 protocols to ensure health & hygiene

To make a booking or discuss your requirements,

call Jan & Sheree today:

Ph: (03) 434 8421 Mob: 021 503 680

Email: [oamaru@drivingmissdaisy.co.nz](mailto:oamaru@drivingmissdaisy.co.nz)

[www.drivingmissdaisy.co.nz](http://www.drivingmissdaisy.co.nz)



Driving Miss Daisy®



# Waitaki

Dear everyone...

**Wondering which businesses are open under Alert Level 3?**

Get the **What's Open Waitaki** app at

<http://waitaki.glideapp.io/>

It tells you:

- Who's open & their new hours
- Their collection / delivery options
- Their contactless pay options
- The best way to contact them right now

It's **free to use and free to add your business.**

Love from,

Waitaki people

**PS:**

*If this is the first you're hearing about this app, it just goes to show how important traditional media still is.*

*You can also get a printable list from:*

*<http://tiny.cc/whatsopenwaitaki> to share with your non-digital friends.*

OAMARU + PHARMACY

*Your Pharmacy*

**Thank you**

**for being there for us  
during level four**

**We are proud to be**

*Your Pharmacy*

Oamaru Pharmacy, 171 Thames st, Oamaru

Ph. 03 434 8741, Mon-Fri 8am-12:30pm (closed for lunch) & 1:30pm - 6pm  
Sat 9.30-12:30pm & 1:30pm-5pm, Sun 10:30 -12:30pm & 1:30pm - 4:30pm

[www.pharmacy-nz.com](http://www.pharmacy-nz.com)

## We're online Business Directory

**Design Federation** 03 434 2447

web [www.designfederation.co.nz](http://www.designfederation.co.nz)

**Hunting & Fishing** 03 434 9893

fb; *Hunting & Fishing New Zealand North Otago*

**Oamaru Print & Copy Ltd** 03 434 9650

email [oamaruprint@gmail.com](mailto:oamaruprint@gmail.com)

**Presence on Harbour** 027 439 5170

web [www.presenceonharbour.co.nz](http://www.presenceonharbour.co.nz)

**Sub & Tarectic skin care and well-being**

web [www.subandtartic.com](http://www.subandtartic.com)

**The Big O** 021 108 6823

Business marketing Web [www.thebigo.co.nz](http://www.thebigo.co.nz)

**Waitaki Interiors** 03 434 7755

web [www.waitakiinteriors.com](http://www.waitakiinteriors.com)

### Community Notices

**TREE PLANTING GRANT** The North Otago Tree Planting Association invite applications from public bodies. Further details 03-4394-004

### For Sale

**Paddys Pea-Straw**; \$9 Conventional Bale; free delivery in town boundary Ph 027 632 4264.

**Small Bales Hay**; Ph (03) 431 3744.

### Services

**Carpet/Vinyl layer** specialising in second hand carpet & repairs. Dion 0223924852.

**Experienced and innovative engineer** available to build or repair any project, big or small. Your place or mine. 0274437142

**Experienced gardeners** available for gardening & pruning. Anything considered. Ph: 027 3199310

**Long grass mowing**, 4WD ride on mower brushcutter. Contract or hire. 0212409766.

**Smash Palace**, for rental cars/vans/bikes, car parts and shuttle service. Ph. 433 1444.

\$10/10lt Bucket \$14/10lt paint, paste pails

**Walnuts - Pickup your own**

**Also Available!**

**Feijoas, Feijoas, Feijoas...**

State Hwy 83, just 2 km west of Georgetown

Daily 10 am - 4 pm

**SUPER SPECIAL**

**6m - Split Pine - \$420**

**Free Delivery Oamaru\***

Town Boundary and

Farmers/Country.

WINZ Quotes are available

**BUY NOW**

**10m @ \$65pm**

\*Free delivery within 1/2 hour of our yard.

Racecourse Firewood Ltd

**027 966 3636**



**Havenwyck Pets**  
*Creating Calm*

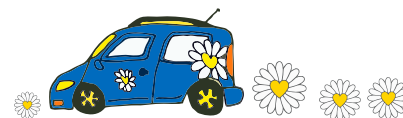
## Havenwyck Pets

### WINTER?

Daylight savings, Easter and ANZAC day have all come and gone leaving us with less daylight hours and cooler evenings. During these cooler months its essential to think of our pets. Our outside animals may need some extra insulation in their hutches and kennels, elderly dogs may need a cover and bed off the floor, warm feed and cosy hay are fantastic for Rabbits, Guinea Pigs and Chooks.

We offer a great range of winter warmers including warm beds, coats and electric blankets.

*Come in and see me at Havenwyck Pets to discuss and find the best pet for you!*  
*Leanne Wreakes-Fallen. Dip.VN*



## Getting support with your feed planning

Wherever you are in NZ, farmers can use a new feed planning service. MPI and partner agencies DairyNZ, Beef + Lamb New Zealand, AgFirst and Federated Farmers, are offering remote feed planning support to farmers and livestock owners in all parts of the country, whether or not you have been directly affected by drought or COVID-19.

### How it works

Call us on one of these toll-free numbers:



Dry stock sector - Beef + Lamb New Zealand:  
**0800 BEEFLAMB (0800 233 352)**



Dairy sector - DairyNZ  
**0800 4 DairyNZ (0800 4 324 7969)**

There are three tiers of feed planning support. The first two are free of charge to farmers.

#### Tier 1: We work out how much feed you need.

A call to an industry or levy body will get you a free stocktake assessment of your feed planning needs.

#### Tier 2: If you need more support to make decisions, we can offer more advice and practical support.

An adviser will help you understand what needs to be done and how you can go about it.

#### Tier 3: We can refer you to a farm systems consultant

who can offer more in-depth information either over the phone or visiting you. This is not a free service. This might be needed to head off serious animal welfare issues, for example. You can look at NZIPIM's website for a list of farm systems consultants near you.



**Get in touch now**

Good feed planning matters. The earlier you plan, the better prepared you'll be. Help is on hand. Give us a call. This service will be available until 30 June 2020, when it will be reviewed.

## Handy Phone Listings

### Accommodation & Facilities

- ▶ Old Bones Lodge .....0274 894 999
- Hot Tubs/Sauna events & accommodation
- ▶ Holiday Home - Seaviews 'n Siestas
- Relax 10% off March-June ..... 021 0827 0805

### Acupuncture & Massage

- ▶ Rick Loos (NZRA) .....03 434 9663
- Acupuncture, Massage & Reflexology

### Bricklaying

- ▶ Doran Brick 'n' Block .....027 516 5675
- .....437 0415

### Building & Construction

- ▶ We Decorate Concrete 027 436 9209
- .....ugly & manky into Slick and Swanky
- ▶ David Ovens Building Contractor Ltd
- .....Licensed B/P.....027 481 9424
- ▶ Doran Brick 'n' Block .....027 516 5675
- .....437 0415
- ▶ Handyman Al's Maintenance & Repairs, qualified joiner.....027 221 1069
- ▶ MGM Handyman Services,
- Your professional handyman 022 3106294
- ▶ Wayne Nuttall Builders..... 437 2513
- .....027 434 3409

### Carpet & Vinyl layer

- ▶ Dion.....0223924852
- specialising in second hand carpet & repairs
- ▶ Flooring Specialist ... free measure and quote
- in Oamaru township ..... 021 727 498

### Chiropractor

- ▶ Oamaru Chiropractic.....021 729 868
- Robert Brydges .....179 Thames St
- ▶ Ron Sim Chiropractor.....434 8784
- .....31 Essex St, Weston

### Cleaning

- ▶ A1 Spic n' Span.....434 5534
- Almost ALL Cleaning .....027 737 8423
- ▶ A+ Services NZ Ltd.....0800 155 166
- windows, gutters and carpets..... 027 7144 812
- ▶ Oamaru Chimney Sweep.....434 8025
- .....027 436 1315
- ▶ Hoppys Cleaning Service ..0211327685
- Home cleaning service "OVENS & more..."

### Contracting

- ▶ Lifestyle Block Contracting..0276324264
- Hay baling, Hedge cutting.

### Counselling

- ▶ AYR St - Counselling .....027 6861849
- Kaye Mattingley...Dip. Grad.S.Sc. Otago.NZRSW. MANZASW
- ▶ Barbara Liffiton .....0211 807 366
- .....NZ RCpN, Grad Dip GT, Prov NZAC

### Dental

- ▶ Oamaru Denture Clinic .....434 7560
- Reg Clinical Dental Technician, 4/6 Coquet St

### Dressmakers

- ▶ Robinson Gray .....021 173 6161
- .....Tailored clothing & alteration

### Driver Lessons

- ▶ XTO Driver training Ltd ..027 262 2031
- .....Driving Instructor/Driving Lessons

### DVD and CD

- ▶ Oamaru Public Library.....433 0850
- .....cleaning service (resurface), \$5 per disc

### Electricians & Appliances

- ▶ Robert Jones - Electrician. 027 445 0523
- .....434 0994
- ▶ Whitestone Appliances..... 021 366 446
- .....repairs.....434 6810
- ▶ VES - Valley Electrical
- ...Domestic & Commercial.....021 1177045

### Entertainment

- ▶ Sylviane's Karaoke .....027 737 8360
- all occasions - bookings sylgal@msn.com

### Flowers

- ▶ Flowerz 4 you .....434 9150
- all occasions, 151 Thames St...027 722 0443

### Firewood

- ▶ Weston Firewood.....434 1085
- .....021 052 2877

### Funeral Directors

- ▶ Walls Funeral Services.....434 8266
- .....49 Humber St

### Gardening & lawns

- ▶ Ashley's Lawn & Garden Care.4372865
- Keeping your lawns in order.....0221086606
- ▶ CHANGEZ Landscape Property Services
- Property maintenance - Steve 021 1148 900
- ▶ Crew Cut large lawns
- Paul Houllaham..... 021 331 261
- ▶ Roses, garden weeding, hedges & lawns
- Steven.....ph/txt...027 2609988

### General Store

- ▶ Roses General Store .....021 515 205
- 9 Tyne St.....after hours...434 8285

### Insulation

- ▶ Dunbars Insulation .....027 789 8788
- .....local and affordable

### Interior Design

- ▶ Tracey Vickers Design ..... 027 5420 215
- Upholstery and Furnishings .....03 439 5370

### Immigration

- ▶ Immigration & Secretarial Services Ltd
- sylviane@isservices.nz.....027 737 8360

### Joinery

- ▶ Inex Joinery/Kitchens 4 Less
- 335 Thames Hwy..... 4341533 or 021 1085500
- ▶ Rycole Joinery Custom designed kitchens
- .....434 5012.....027 276 2866

### Mobile Travel Broker

- ▶ Jannine Hore .....439 4230
- The Travel Brokers - member of Helloworld
- ▶ Lynne Sinclair, NZ Travel Brokers.....
- Cruising/Holiday Packages.....432 4172

### Painters & Decorators

- ▶ ACE Painters .....027 201 1918
- .....for all your painting needs.
- ▶ Don - Painter & Decorator - 25 years
- .....Call for a quotation .....027 2205403

### Pets

- ▶ Suds & Paws for dog grooming 4345957
- ▶ Paws Awhile Boarding Cattery 4341296
- ▶ Puppy Love Grooming.....021 101 7858
- ▶ Shaggy Chic Dog Grooming
- 40 Ribble St ..... 022 150 0395

### Plumbers

- ▶ AG Plumbing.....021434950
- .....Blocked drains & CCTV Camera
- ▶ Cunningham Plumbing, Oamaru
- .....Plumbing & Drainlaying..0800 555 105
- ▶ Foley Plumbers Oamaru.....434 2330
- .....Sam Boswell.....0800 303 530
- ▶ Hiflo's Group ..... 03 434 9873
- .....Plumbing, Heating & Rockgas

### Professional Podiatrist

- ▶ Simply Feet Podiatry.....437 9025
- .....316 Thames Hwy, open Mon-Fri

### Print

- ▶ Oamaru Print and Copy Ltd.....434 9651

### Progress Coach

- ▶ Jenny Malcolm.....0274 477079
- .....Helping you progress forward.

### Tiling

- ▶ Lakeland Tiling.....Shane..027 312 2017
- .....Kitchens & Bathrooms - No job too small
- ▶ Doran Brick 'n' Block .....027 516 5675
- .....437 0415

### Transportation & Rental Vehicles

- ▶ Airport/Hospital, Oamaru Tour
- .....transfers (Merv Aitcheson) .....434 9506
- ▶ Driving Miss Daisy .....434 8421
- .....Appointments, Dunedin & Timaru Hospital, Shopping
- ▶ Smash Palace.....433 1444
- .....Cars, Vans, Bicycle Hire & Shuttle Service

### TV Installation & Repairs etc

- ▶ Nathan Oakes TV, Sound, PC Install & Repairs.....0210 237 0646 or 03 437 2474

### Upholstery

- ▶ Craft Upholstery.....Kirk 021 022 98678
- ..... www.craftupholstery.co.nz

### Window Tinting

- ▶ Tint a Window.....0800 368 468
- UV fade, heat, glare & privacy.tintwindow.co.nz



NZ owned & operated  
Funeral Home

## WALL'S FUNERAL SERVICES



When you need us,  
we'll be there.

Plan ahead with us, ease the burden on your loved ones by pre-planning.

Ensure your wishes are recorded and carried out.

Ensuring peace of mind

Funeral prearrangement simply means that by planning now, you can ensure that your funeral reflects your personal wishes.

49 Humber Street, Oamaru  
P: 03 434 8266  
E: admin@wallsfuneralservices.co.nz

# OT's TREES

Do you have a tree posing a risk to your property or blocking your view?

We specialise in tree removal, topping or reshaping, stump grinding and clean up.

For Free Quote Phone Matt  
**027 470 8269**



**LEVEL 3 CONTACTLESS  
GIVE US A CALL**

**03 434 9663**

or text

**027 747 1089**

email [info@h2koam.co.nz](mailto:info@h2koam.co.nz)

Pick up from Shop front door

We **courier FREE** for  
out of town customers

We now offer  
**FREE DELIVERY**  
to Oamaru & Weston

Pay - **VISA** over the phone  
or by internet banking

Looking after your health  
Where caring comes naturally  
**HEALTH 2000 OAMARU**



**Our new online store  
is up and running!**

Most of the beautiful products you find in  
our store are now available for  
purchase online. If you live within  
Oamaru/Weston there is free contactless  
delivery options available for you  
during Covid-19 Level 3.

**[www.waitakiinteriors.com](http://www.waitakiinteriors.com)**

29 Thames Street, Oamaru, Ph. 434 7755



For all your  
**Rawleighs products**  
Now available to  
the Oamaru and  
surrounding areas

For catalogue/pricelist.  
Contact us.



**Independent Rawleighs Distributor**

Fiona Head, 283 Wooldridge Road  
Harewood, Christchurch. 8051

Email: [bandovar@orcon.net.nz](mailto:bandovar@orcon.net.nz)

Phone: 022 086 7300 or 03 550 1544

**TK HIRE** 2020 LTD  
LOCALLY OWNED AND OPERATED

**LOCALS SUPPORTING LOCALS**  
FOR ALL YOUR EQUIPMENT AND PARTY HIRE



- Diggers
- Tractors
- Access Gear
- Gardening
- Trailers
- Table/Chairs
- Crockery/cutlery
- Bar and glassware

Monday – Friday 7.00am – 5.30pm, Saturday 7.00am – 4.00pm  
Sunday 9am – 12.00pm  
Ph. 03 434 9844 Email: [tkhire2009@gmail.com](mailto:tkhire2009@gmail.com)