

100% locally owned
8,000+ homes weekly

Oamaru The Telegram



19th May 2020

Phone 434 9651

Issue 486



- Interior
- Exterior
- Wallpapering

LINDSAY WHYTE

Painters and Decorators Ltd

50 Years Experience Master Painter

FREE PHONE 0800 242 8611



It is great to see... So many people thinking about and creating new ideas and projects for supporting locals and local businesses. If you are running a project to help, take a good look around and see if you could help another project - or even merge and work together.

We now have 24 local businesses registered on www.shopoamaru.co.nz and are hoping for more to join soon.

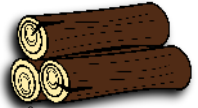
IT IS FREE!

As we are now in level 2 - Let us know what events and meetings you have planned, so we can update our Community Diary.

If you do have events planned - please do follow the **Covid19 guidelines for level 2**. These can be found on the Covid19 govt website.

Enjoy your week, regards The Telegram.

Fire Wood



Free delivery Waimate to Oamaru 3m³/6m³ loads
Stacking available at extra cost

Unseasoned (green) Dry (when available)

| | |
|-------------------------------|-----------------------|
| Pine \$50 p/m ³ | \$60 p/m ³ |
| O.M.P \$55 p/m ³ | \$75 p/m ³ |
| Macro \$65 p/m ³ | \$85 p/m ³ |
| Bluegum \$75 p/m ³ | \$95 p/m ³ |

Call Karl 027 629 7664

Get in now and avoid winter prices
Qualified tree felling, portable mill available,
macro timber sales



virginia@vbalimited.co.nz

022 069 8450

Bespoke high performance
architectural homes
& alterations

VIRGINIA BARLOW ARCHITECTURE

DRAFTLINE LTD

Patrick Coll NZCD Arch

10 Beswick Street, Timaru

P 03 688 8455 E office@draftline.co.nz

www.draftline.co.nz



FOR ALL YOUR ARCHITECTURAL DESIGN & DRAUGHTING NEEDS

SOUTHERN WIDE REAL ESTATE

HUGE PRICE DROP, MUST ACT NOW!

NEW MARKET PRICE



Walking through the front door, one side leads to a modern kitchen, dining area with a heat pump, with a slider door which flows out onto a large sunny deck. The other side of this is the main lounge which has a heat pump and wood burner. Off this is a second living area which is an ideal media room or office. The home boasts two modern bathrooms and 3 toilets. All five bedrooms are double all with wardrobes.

Outside is a wee man cave off the deck. The section is fully fenced and safe for the whole family. There is also a large double garage.

Web Ref #: SWOU12010

Daryl Siggelko
Urban/Lifestyle
027 520 0040

daryls@southernwide.co.nz



Offers Over \$465,000

225 Thames St, Oamaru
Ph 03 434 7422

www.southernwide.co.nz

SRM REALTY LTD LICENSED REAA 2008

New Zealand Petfoods Great news



NZ Petfoods shop at
16 Ouse Street will
be reopening
under Level 2,
so will the **dog wash!**

conditions will apply

Goldies Glass Ltd

24 hour glass service

Phone the
experienced professionals

Insurance Work Welcome

03 434 8701 | 027 433 2258

77 Humber St, Oamaru

OAMARU LANDSCAPING SUPPLIES

OPEN FOR TRADING

ON LEVEL 2, HOURS CHANGED TO

9-3PM MON -FRIDAY

10 – 12 noon SATURDAY,

CLOSED SUNDAY

INDUSTRIAL PLACE 1K RD PH. 03 437 1888

OPEN: MON - FRI 9AM - 3PM & SAT 10AM - 12noon

FOR ALL YOUR GARDEN & LANDSCAPE SUPPLIES

NURSERY
SOIL
WOOD
COAL



What a difference a rain makes during Autumn, however I have still needed to give some areas a good soak, it is the shallow rooted tree's and shrubs that need help before winter. I have lost aged maples because of dry Autumn conditions so I now always give every one a good soak before winter. Other shallow rooted shrubs that may be looking for a good soaking are rhododendrons, azaleas, camellias,

daphne, hydrangeas, lilacs, cornus (dogwood), buxus and viburnums.

A heap of work was done here in the garden this week, my ready compost is going down fast as autumn leaves, annual weeds and lawn clippings refill the bins for my next autumn compost.

I have been potting up well grown seedlings before the nights get colder, because they are straight from seed trays frost cloth has gone on at night. I remove it on sunny days but once we start getting frosts it will remain on until spring.

Remove water trays from pots now, soil will stay damp from now on and should never be waterlogged through out winter as this will lead to plant roots freezing and rotting.

This is a great time to make new perennial beds or re-organise existing beds, with perennial clumps increasing in size annually they soon over fill a space. Lift overgrown clumps, break up and replant some of the youngest growths from the perimeter. Healthy vigorous plants can be reduced by putting a sharp spade in where you would like a reduction then lift the cut portion out without disturbing the remaining plant. I have been doing this with asters, phlox, aubretia, small grass's, hosta's, and herbs like sage, thyme and lemon balm. Rockery plants can be divided now as well. Once plants have been sectioned and rearranged cover the bed and around plants with compost to encourage new root growth and help to keep perennial beds warmer through the colder months.

All old leaves from my **hellebores (winter roses)** have now been removed, they are budding up for a winter display so a fortnightly liquid feed can be given now if you feel they need boosting. Further in land it would be advisable to leave some top growth on to give frost protection to soft new growth, once hardened remove all leaves to display flowers.

Lilies, this is the main time to shift or divide old over grown clumps of lilies. Be careful not to break the fleshy scales and to retain all the basal roots. Don't pull the old stems away from the bulb as it leaves a hole where water can enter and cause rot, just cut old stems short and bend. Never allow Lilly bulbs to dry out while out of the ground, I plant lilies on a little river sand and cover with compost which has had blood and bone added.

May is the planting month for tulips bulbs should be in retail outlets when they open, plant them at least 8 inches (20cm) deep in a well drained sunny spot.

Vegetables and fruit

Continue planting strawberry plants, raising the beds where drainage is suspect and adding manure rich compost to the beds.

Garlic planting time, It is said to plant garlic on the shortest day but any time from late May until August is ok. Select large single cloves (plant point up) 5cm deep and 20cm apart in warm, well-drained sites where soil has been recently limed.

Feijoas are plumping up and our NZ cranberries (myrtus ugni) are ripe for eating , also figs should be ready along with walnuts and hazelnuts so still a lot of gathering happening.

Cheers, Linda

Oamaru Based Tree Specialist



Tree Care, Difficult Tree Removals, Height Reduction, Hedge Trimming, Trees Pruning, Stump Grinding & Chipping. Qualified Arborists

Matt Slater 027 241 3343 03 437 1440
treesculptotago@hotmail.co.nz Oamaru



Keep Safe, we are open for your Winter Battery needs and more!

7 Regina Lane North End

Ph: 03 437 0781

Come see us over the rail lines for all auto electrical work!

WINTER
BATTERIES

Trees Need Trimmed?



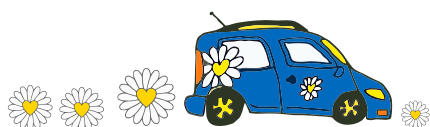
KEA TREEWORX
Certified Arborists

Pruning - Removals - Chipping

Chris Conklin 027 484 3395

Jack Vaughan 021 582 300

keatreeworks.co.nz



carpetcourt

OPEN Monday - Friday 10am - 5pm
Saturday 10am - 2pm

Ph. 03 663 9011, 41 Thames Street



General indoor & outdoor repairs, fencing, decking, bathroom, kitchen renos & more...

PH. TOM 021 0233 2002 OR 434 3326

Rates Rebate Aid Available from Monday 18th May with Distancing in Place

From next Monday, May 18th, Waitaki ratepayers will be able to bring their 2019/2020 Rates rebate applications into the Waitaki District Council for the witnessing of their signature and, if required, help with the completion of their application. Staff will be available to assist both at our Waihemo service centre as well as at Council HQ in Oamaru.

As we will be maintaining social distancing with the door being monitored by an officer, there may be a wait for people to be seen, so to avoid an uncomfortable wait it is recommended that you make an appointment with Jay McMillian in the first instance as next week is rates week and the team will be very busy as a result.

Jay has some tips, "Please **bring the relevant paperwork** with you, such as proof of income from all sources to the end of March 2019.

We will have an area set aside allowing for **social distancing**, where you will be able to talk to a council representative who may be able to assist with your application.

An application form for the 2020/2021 rates rebates will be posted out to ratepayers at the end of July – when they become available to us."

If you require an appointment please call our Customer Services team on **03 433 0300** and talk to one of our staff. Its worth repeating that Council is keen to hear from you if you feel that your current circumstances mean paying your rates will be very difficult. The rebate, if you qualify, is one way to mitigate this problem but we will try to find solutions that work for everyone.



WE ARE OPEN

**Ring for Advice,
Order Products
We can Delivery.**

**Tuesday - Friday 9am - 5pm
Saturday 10am - 2pm**

**Petshop - Training - Rehoming
2 Coquet St (03) 427 0174**



Where Happiness is Homemade

WE ARE OPEN

MON-FRI 9AM - 5:30PM

SAT 9:30AM - 2PM

PICK UP YOUR PANTRY ESSENTIALS IN STORE

YOU CAN

PH: 433 1433

TXT: 027 357 6590

EMAIL

info@realfoodpantry.co.nz

YOUR ORDERS

10 Eden St, Oamaru

03 433 1433

info@realfoodpantry.co.nz

Like us on Facebook 

OAMARU + PHARMACY

It's your Pharmacy

Let's Talk about how Buccaline works

Buccaline powers your immunity strength. The natural bacterial antigens in Buccaline stimulate lymphocytes, the body's first line of defence against colds. That means if you are affected by a cold your immunity is in a much stronger condition to fight off serious bacterial complications that can develop with a weaker immunity. What are cold complications? Cold complications are serious secondary infections caused by excessive bacteria when you have a cold. Mucus that sits in the nose and chest during a cold can be a breeding ground for harmful bacteria. The bacteria in the nose and throat normally occur in very low numbers, but during the course of a cold, the bacteria can build up over a period of one week to 10 days. By this time, either the cold will begin to resolve and the mucus will go away, as well as the bacteria, or the bacteria will grow enough to cause a secondary bacterial infection. These bacterial complications of colds can affect the sinuses, chest, or ears and can lead on to serious health problems such as sinus infection, asthma attacks, bronchitis, tonsillitis, ear infection and even pneumonia. For people with chronic health conditions such as asthma, heart disease or diabetes the risk is even greater. That's why it's important to take preventative treatment and boost your immunity strength with Buccaline. Who should take Buccaline? Workers, Buccaline helps to reduce your sick days and get back to work faster. Even if you get the symptoms of a cold, you'll find it will clear up quicker with Buccaline because your immune system is already in response. Kids, Buccaline helps to keep your little ones safe and well all year round. With a 3-day course of easy to swallow tablets you'll be able to reduce absent days from school and time off work needed to look after them at home. And if your child suffers from Asthma, Buccaline provides vital protection from the potentially serious complications a cold can cause. Elderly, when it comes to complications of colds the elderly are especially at risk. That's why we recommend the elderly take Buccaline monthly for maximum immunity protection. Overall Buccaline is recommended by and can be sold by your friendly pharmacist's at Oamaru Pharmacy. *The team is always ready to help with friendly and knowledgeable advice at Oamaru Pharmacy - Your Pharmacy.*

Driving Miss Daisy Oamaru Where can we take you?

- Friendly service
- Grocery shopping
- Out for coffee
- Any appointments
- Just about anywhere you want to go



Local trips for Total Mobility Card holders
FREE until 30th June

To make a booking or discuss your requirements,

call Jan & Sheree today:

Ph: (03) 434 8421 Mob: 021 503 680

Email: oamaru@drivingmissdaisy.co.nz

www.drivingmissdaisy.co.nz



Driving Miss Daisy®



OAMARU
SPORTS & OUTDOORS

DUCK HUNTING

Check List

- Licence
- Decoys
- Camo-paint
- Callers
- Ammo
- Portable Mai-mai
- Clothing
- All accessories
- Don't forget the Gun

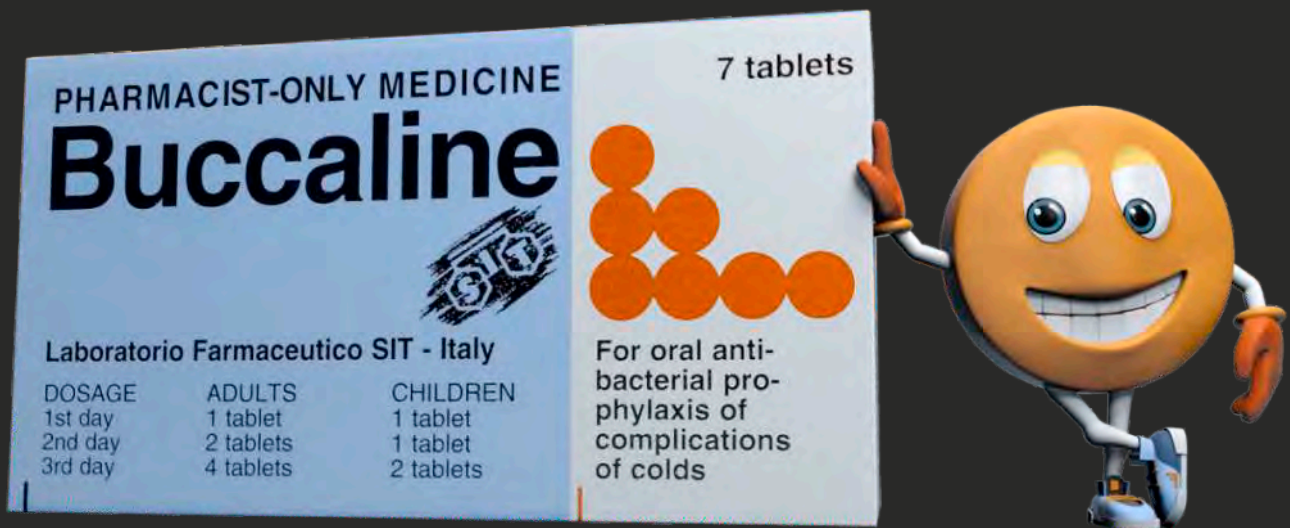
**NEW & 2nd Hand
Shotguns available**

Ph. 03 434 5609 - 223 Thames St

See the experts with over 60 years local experience

OAMARU + PHARMACY

Your Pharmacy



Stay healthy with Buccaline
Join over 100,000 Kiwis powering their immunity strength.

Oamaru Pharmacy, 171 Thames st, Oamaru

Ph. 03 434 8741, Monday - Friday 8am - 6pm

Saturday 9.30 - 5pm, Sunday 10:30 - 4:30pm

www.pharmacy-nz.com

Public Notices

Oamaru Coffee Riders, ALL riders, all abilities catered for. For ride times & venues, please visit our FB Page or ph: 021 121 4627.

For Sale

Paddys Pea-Straw; \$9 Conventional Bale; free delivery in town boundary Ph 027 632 4264.

Roller Door; 3.1m width x 2.9m height, Almost new. Ph Ron Sim 03 4348784, 03 4348783.

Small Bales Hay; Ph (03) 431 3744.

Services

Carpet/Vinyl layer specialising in second hand carpet & repairs. Dion 0223924852.

Experienced and innovative engineer available to build or repair any project, big or small. Your place or mine. 0274437142

Experienced gardeners available for gardening & pruning. Anything considered. Ph: 027 3199310

Long grass mowing, 4WD ride on mower brushcutter. Contract or hire. 0212409766.

Smash Palace, for rental cars/vans/bikes, car parts and shuttle service. Ph. 433 1444.

SUPER SPECIAL

6m - Split Pine - \$420

Free Delivery Oamaru*
Town Boundary and
Farmers/Country.

WINZ Quotes are available

BUY NOW
10m @ \$65pm

*Free delivery within 1/2 hour of our yard.

Racecourse Firewood Ltd

027 966 3636



Feijoas \$5/kg

Feijoas - Ready Now!

Also Available!
Apples, Pears and Quinces
State Hwy 83, just 2 km west of Georgetown
Daily 10 am - 4 pm

Duck Hunting Season

Duck shooting opens the 23rd of May with the central South Island season running through till July 30. Manager of Oamaru Sports and Outdoors, Richard Hill's no 1 tip for the upcoming season is "know the rules and check your rifles and ammunition. There's no point in planning

a great opening day if your rifle doesn't perform." Oamaru Sports and Outdoors has your hunting needs covered with a range of firearms, ammunition, clothing and decoys which are proving very popular this season. A shooting licence is compulsory and can be purchased from Oamaru Sports and Outdoors.

Your licence is a permit to hunt for game birds in accordance with the regulations governing the Fish & Game New Zealand region in which you are hunting.

It does not grant or imply any right of access over land.

If you want to walk over private land, please first get the permission of the land occupier. This common courtesy often results in the farmer providing useful information and better access. You must purchase and sign your licence before you go hunting. You must then have your licence with you whenever you are hunting or carrying assembled hunting gear. Licences are not upgradable, exchangeable or refundable. A licence comes with a book of rules and conditions which must be read and adhered to and it is important to note that each region may vary in the rules and conditions that apply. Strict laws govern the number of birds which are allowed to be taken daily and may change between provinces.

The daily bag allowed for Grey/mallard duck and any hybrid of those species is 50 ducks per person per day in the central South Island region.

Pre season is a great time for all hunters to refresh themselves with the seven basic rules of firearms safety.

1. Treat every firearm as loaded
2. Always point firearms in a safe direction
3. Load a firearm only when ready to fire
4. Identify your target beyond all doubt
5. Check your firing zone
6. Store firearms and ammunition safely
7. Avoid alcohol and drugs when handling firearms.

Pop into the store for a licence, equipment and advice on all things hunting.



Havenwyck Pets

Heading Back to Work?

Our past 6 weeks have been quite an experience with majority of us working from home. Although it has been wonderful to have time spent with our furry, feathered and finned family members now is the time to get back into a routine. Our canines and felines may be the most affected by us heading off to work so now is a fantastic time to look at enrichment to keep them busy whilst we are!

A few tips and tricks - Cats love to hunt so we can provide 'hunt' spots around the house with a reward, take a portion of your cats food and pop it places your cat likes to hide and sleep, let them hunt the house to find their meal!

Dogs love to chew so providing a long lasting chew toy is a great way to keep the occupied while you head on your way to work. A Kong, treat ball, lick mat and natural treats work well for inside or outside dogs!

Pop on line at our NEW website to see what items your cat or dog will enjoy.

Come in and see me at Havenwyck Pets to discuss and find the best pet for you! Leanne Wreakes-Fallen. Dip.VN



TK

HIRE

2020 LTD

LOCALLY OWNED AND OPERATED

LOCALS SUPPORTING LOCALS
FOR ALL YOUR EQUIPMENT AND PARTY HIRE



- Diggers
- Tractors
- Access Gear
- Gardening
- Trailers
- Table/Chairs
- Crockery/cutlery
- Bar and glassware

Monday – Friday 7.00am – 5.30pm, Saturday 7.00am – 4.00pm
Sunday 9am – 12.00pm

Ph. 03 434 9844 Email: tkhire2009@gmail.com

Handy Phone Listings

Accommodation & Facilities

- ▶ **Holiday Home - Seaviews 'n Siestas**
Relax 10% off Moeraki 021 0827 0805

Acupuncture & Massage

- ▶ **Rick Loos (NZRA)**03 434 9663
Acupuncture, Massage & Reflexology

Building & Construction

- ▶ **DOMINATOR Garage Door Centre**
.....Quality you can trust.....03 434 8476
- ▶ **David Ovens Building Contractor Ltd**
.....Licensed B/P.....027 481 9424
- ▶ **Handyman Al's Maintenance & Repairs, qualified joiner**.....027 221 1069
- ▶ **MGM Handyman Services,**
Your professional handyman 022 3106294
- ▶ **Wayne Nuttall Builders**..... 437 2513
.....027 434 3409

Carpet & Vinyl layer

- ▶ **Dion**.....0223924852
specialising in second hand carpet & repairs
- ▶ **Flooring Specialist ...** free measure and quote
in Oamaru township 021 727 498

Chiropractor

- ▶ **Oamaru Chiropractic**.....021 729 868
Robert Brydges179 Thames St
- ▶ **Ron Sim Chiropractor**.....434 8784
.....31 Essex St, Weston

Cleaning

- ▶ **A1 Spic n' Span**.....434 5534
Almost ALL Cleaning027 737 8423
- ▶ **A+ Services NZ Ltd**.....0800 155 166
windows, gutters and carpets..... 027 7144 812
- ▶ **Oamaru Chimney Sweep**.....434 8025
.....027 436 1315

Counselling

- ▶ **AYR St - Counselling**027 6861849
Kaye Mattingley...Dip. Grad.S.Sc. Otago.NZRSW. MANZASW
- ▶ **Barbara Liffiton**0211 807 366
.....NZ RCpN, Grad Dip GT, Prov NZAC

Dental

- ▶ **Oamaru Denture Clinic**434 7560
Reg Clinical Dental Technician, 4/6 Coquet St

Dressmakers

- ▶ **Robinson Gray**021 173 6161
.....Tailored clothing & alteration
- ▶ **Jenny Boon**022 034.9190
.....Clothing alterations

Driver Lessons

- ▶ **XTO Driver training Ltd** ..027 262 2031
.....Driving Instructor/Driving Lessons

DVD and CD

- ▶ **Oamaru Public Library**.....433 0850
.....cleaning service (resurface), \$5 per disc

Electricians & Appliances

- ▶ **Robert Jones - Electrician**. 027 445 0523
.....434 0994
- ▶ **Whitestone Appliances**..... 021 366 446
.....repairs.....434 6810
- ▶ **VES - Valley Electrical**
...Domestic & Commercial.....021 1177045

Entertainment

- ▶ **Sylviane's Karaoke**027 737 8360
all occasions - bookings sylgal@msn.com

Flowers

- ▶ **Flowerz 4 you**434 9150
all occasions, 151 Thames St...027 722 0443

Firewood

- ▶ **Weston Firewood**.....434 1085
.....021 052 2877

Funeral Directors

- ▶ **Walls Funeral Services**.....434 8266
.....49 Humber St

Gardening & lawns

- ▶ **Ashleys Lawn & Garden Care**.4372865
Includes ride on lawns.....0221086606
- ▶ **CHANGEZ Landscape Property Services**
Property maintenance - Steve 021 1148 900
- ▶ **Crew Cut large lawns**
Paul Houllahan..... 021 331 261
- ▶ **Roses, garden weeding, hedges & lawns**
Steven.....ph/txt...027 2609988

General Store

- ▶ **Roses General Store**021 515 205
9 Tyne St.....after hours...434 8285

Insulation

- ▶ **Dunbars Insulation**027 789 8788
.....local and affordable

Interior Design

- ▶ **Tracey Vickers Design** 027 5420 215
Upholstery and Furnishings03 439 5370

Immigration

- ▶ **Immigration & Secretarial Services Ltd**
sylviane@isservices.nz.....027 737 8360

Joinery

- ▶ **Inex Joinery/Kitchens 4 Less**
335 Thames Hwy..... 4341533 or 021 1085500
- ▶ **Rycole Joinery Custom designed kitchens**
.....434 5012.....027 276 2866

Painters & Decorators

- ▶ **ACE Painters**027 201 1918
.....for all your painting needs.
- ▶ **Don - Painter & Decorator - 25 years**
.....Call for a quotation027 2205403

Pets

- ▶ **Suds & Paws for dog grooming** 4345957
- ▶ **Paws Awhile Boarding Cattery** 4341296
- ▶ **Puppy Love Grooming**.....021 101 7858
- ▶ **Shaggy Chic Dog Grooming**
40 Ribble St 022 150 0395

Plumbers

- ▶ **AG Plumbing**.....021434950
.....Blocked drains & CCTV Camera
- ▶ **Cunningham Plumbing, Oamaru**
.....Plumbing & Draining...0800 555 105
- ▶ **Foley Plumbers Oamaru**.....434 2330
.....Sam Boswell.....0800 303 530
- ▶ **Hiflo's Group** 03 434 9873
.....Plumbing, Heating & Rockgas

Professional Podiatrist

- ▶ **Simply Feet Podiatry**.....437 9025
.....316 Thames Hwy, open Mon-Fri

Print

- ▶ **Oamaru Print and Copy Ltd**.....434 9651

Progress Coach

- ▶ **Jenny Malcolm**.....0274 477079
.....Helping you progress forward.

Tiling

- ▶ **Lakeland Tiling**.....Shane..027 312 2017
.....Kitchens & Bathrooms - No job too small

Transportation & Rental Vehicles

- ▶ **Airport/Hospital, Oamaru Tour**
.....transfers (*Merv Aitcheson*)434 9506
- ▶ **Driving Miss Daisy**434 8421
.....Appointments, Dunedin & Timaru Hospital, Shopping
- ▶ **Smash Palace**.....433 1444
.....Cars, Vans, Bicycle Hire & Shuttle Service

TV Installation & Repairs etc

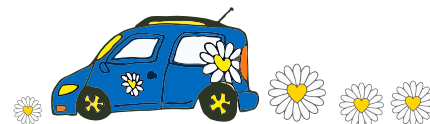
- ▶ **Nathan Oakes TV, Sound, PC Install & Repairs**.....0210 237 0646 or 03 437 2474

Upholstery

- ▶ **Craft Upholstery**.....Kirk 021 022 98678
..... www.craftupholstery.co.nz

Window Tinting

- ▶ **Tint a Window**.....0800 368 468
UV fade, heat, glare & privacy.tintawindow.co.nz





WALL'S FUNERAL SERVICES



NZ owned & operated Funeral Home

When you need us, we'll be there

Plan ahead with us, ease the burden on your loved ones by pre-planning.

Ensure your wishes are recorded and carried out.

Ensuring peace of mind

Funeral prearrangement simply means that by planning now, you can ensure that your funeral reflects your personal wishes.

49 Humber Street, Oamaru
P: 03 434 8266
E: admin@wallsfuneralservices.co.nz

OT's TREES

Do you have a tree posing a risk to your property or blocking your view?

We specialise in tree removal, topping or reshaping, stump grinding and clean up.

For Free Quote Phone Matt

027 470 8269

Recreation in Waitaki at Level 2

Public health measures when enjoying play, active recreation or sport still need to be adhered to under Level 2 – meaning we are open for business not quite as usual. Our contractors will be inspecting facilities as quickly as possible and removing signs and tape. We expect it may take a couple of days to get around the district. Should any signs or tape remain, please refrain from using until these have been removed. Specific requirements when out and about are:

- Wash hands frequently. Try to avoid touching high contact areas such as handrails.
- Maintain a register of places you visit and people you come in contact with.
- Maintain social distancing of 2 metres and bubbles of no more than 10 people. Don't bubble hop.
- Clean and sanitise equipment before and after use. Do not share equipment.
- If unwell, stay home.

Camps: Our Camps will open for the purpose of packing down campsites only, not for recreational camping. Waitaki Lakes Camping grounds will open on Thursday 14th May and close on Monday 1st of June to allow people plenty of time to make plans to get there and pack down sites over that period.

- One overnight stay allowed only if needed, unless this is not possible, and then campers are asked to apply to lwhite@waitaki.govt.nz, in writing, for a longer stay period.
- Bring your own hand sanitiser and cleaning supplies if possible
- Sign-in to the register at each kiosk on arrival and on leaving
- Read the guidance at each noticeboard and on facility doors
- Campers are responsible for their own caravans and camp equipment

Playgrounds, parks and reserves, skateparks and drinking fountains:

When we move into Level 2, the majority of our facilities will reopen. We need to undertake an inspection of these facilities. Cleaning and unlocking will all need to take place before the public can safely use these again.

Public toilets:

The majority of these will reopen. In rural areas some of these will remain at only one accessible cubicle open – again, these will be cleaned and inspected prior to reopening so only use if all tape and closed signs are removed.

Public tennis courts: Contact tracing and sanitization must be undertaken by users if using our public courts. Avoid sharing of equipment, clean and sanitize surfaces, equipment and hands before and after use.

Alps 2 Ocean and walking tracks: Trails and tracks are open – keep up social distancing of 2m from those you don't know. Avoid tracks where this may be difficult. Keep a contact register with you and be aware of common touch points like gate and rails – clean and sanitise before and after touching. Toilets on the Alps to Ocean will re-open, apart from Pumpkin Point and Lake Ohau weir toilet, at this stage.

Boat ramps and jetties, These will all be open again.

Cemeteries: Up to 10 mourners who attend a funeral will be allowed on site for burials, with contact tracing and public health measures being met. Congregations to not exceed two hours. Ash interments are permitted, with public health measures in place and headstones and plaques may be installed – both of these have a maximum attendance of 10 people permitted. Cemeteries will be open for the public to visit, social distancing to be observed.

Aquatic Centre: As you know we are currently closed for our scheduled maintenance program which we brought forward to coincide with being able to work - with restrictions – under Level 3. Under level 2 this work will continue and contractors and our team are making good progress. At this stage we are expecting to be closed well into June. Please check on the Aquatic Centre Facebook page for updates on how we are progressing. Thank you to those that have participated in our telephone survey over the last couple of weeks – your honest feedback is appreciated and will enable us to make changes to and how we deliver our Programmes (Swim School, Squads & AquaExercise).



Waitaki
Interiors
Beautiful Designs for your Home

We are Open!

15% off Luxaflex Blinds

Check out our sales table instore

www.waitakiinteriors.com

29 Thames Street, Oamaru, Ph. 434 7755



**Rose's
General
Store**

During Alert Level 2
Open 10am - 4pm
9 Tyne Street, Oamaru

Free delivery - Oamaru and Weston.
Order online or by phone
www.rosesoamaru.co.nz
Ph 021 515 205 or A/H 434 8285
Wendy Simpson -Independent Distributor

Rawleigh's
HEALTHCARE
"QUALITY HEALTHCARE SINCE 1889"