

The community prefer to find their trade & service providers locally and rely on the Telegram for this.

9th June 2020

Phone 434 9651

Issue 489

THE GARAGE DOOR CENTRE

Call Brian on 0274 335 299 or 434 8476



DOMINATOR

YES we Sell Garage Door Systems – Free Quote
YES we repair Garage Doors

With Car parking being free in town until 1st July, it is a great time to come in and support your local business, but please have respect for the other shoppers, by not parking in the same spot for too long - this will allow other customers to shop with ease. Starting or have an existing business? Let us help with your design, print and advertising for your business. Did you know Oamaru Print - formally Avis Business has been operating in Oamaru for over 36 years! Why not let us know your business's story - by writing us a short article... Until next week **Regards, The Telegram.**



Specialist Disinfection Cleaning

- ♦ Carpets ♦ Upholstery Residential ♦ Commercial
- ♦ Full cleaning packages for vacant properties
- ♦ Exterior window cleaning

Just call John to discuss what's possible under COVID restrictions

Ph. 027 737 8423 or A/H 434 5534

facebook [spicnspan.oamaru](https://www.facebook.com/spicnspan.oamaru) Call for FREE quote

WARMER, DRIER & HEALTHIER

Insulate and Ventilate now for a cosier home

Earthwool Glasswool Insulation - installed by us or we will supply at fantastic prices - only \$995 for a 80sqm R3.6 Ceiling installed.

Drivaire Home Ventilation Systems - rid your home of moisture and enjoy a healthier living environment with a quality NZ manufactured system.

Call today for a free quote. We also offer a range of Hitachi and Mitsubishi Heat Pumps at extremely competitive prices.



LIVING HOUSE

Ph. John Pile on 0800 434 600
Email john@livinghouse.co.nz

www.livinghouse.co.nz

New Zealand Petfoods

Great selection of dog coats in store



Ph. 03 434 8484 - 16 Ouse Street



VAN SMIRREN ACCOUNTING

MOBILE ACCOUNTANT

Tax Services, Accounting Services, Business Consults

Contact John
for a FREE
Quote

Ph. 03 432 4283 or 027 431 2773

Email: john@vansmirrenaccounting.co.nz



BANKS Rural

AUTO ELECTRICAL 2010 LTD

Complete Auto Electrical Parts & Service

Mobile A/C Vehicle PH 434 6695
41 Humber St, Oamaru / onsite rural repairs

For every Yuasa Battery or Battery Charger sold, go into the draw to WIN a monthly \$100 Grocery Voucher



- Batteries • Air Conditioning • Starters
- Alternators • Car Audio & Parts
- Electronic Diagnosis • Car Alarms



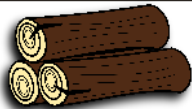
OAMARU LANDSCAPING SUPPLIES

CLEARANCE OF,
ROSES - 1/2 PRICE OF BOTH & STANDARDS.
SHRUBS - VARIETY OF STOCK,
DECIDUOUS, AND NATIVE.
KINDLING - LARGE BAGS \$7.00
COAL KIA 30KG \$14.00



INDUSTRIAL PLACE 1K RD PH. 03 437 1888
 OPEN: MON - FRI 9AM - 3PM & SAT 10AM - 12noon

Fire Wood



Free delivery Waimate to Oamaru 3m³/6m³ loads
 Stacking available at extra cost

Unseasoned (green) Dry (when available)

Pine \$50 p/m ³	\$60 p/m ³
O.M.P \$55 p/m ³	\$75 p/m ³
Macro \$65 p/m ³	\$85 p/m ³
Bluegum \$75 p/m ³	\$95 p/m ³

Call Karl 027 629 7664

Get in now and avoid winter prices
 Qualified tree felling, portable mill available,
 macro timber sales

Look Forward to the Fushia

RayWhite

Sell through Leona Stretch
a Salesperson that keeps in touch after the sale



Leona Stretch Licensee Salesperson
 027 482 0908
 leona.stretch@raywhite.com

Essential Realty Limited Licensed REA 2008 T/A Ray White Oamaru
 99 Thames Street, Oamaru | 03 434 8855 | rwoamaru.co.nz



Keep Safe, we are open for your
 Winter Battery needs and more!
 7 Regina Lane North End



Ph: 03 437 0781

Come see us over the rail lines for all auto electrical work!

Central Podiatry Limited

Nathan Dickson

Cost \$44 pension or community service, house calls available
 Quality treatment of all foot and lower limb conditions
Community House, Oamaru Ph: 434 8862

Some nice warm sun filled days after chilly nights and mornings last week, as we slipped into June. It was so good to have family with Grandchildren stay over Queens Birthday - almost felt normal again...

Keep the water up as trees and Shrubs let you know it's needed. Soak Rhododendrons, Azaleas, Camellias and Hydrangeas, as they most certainly will be needing water during this dry spell - cold nights draw ground moisture, dew up as the ground cools, so when rainfall has been minimal, Shrub and tree roots can go into Winter too dry. Roots do not become dormant in the Winter as quickly as stems, branches and buds - and roots are less hardy than stems. Moist soil holds more heat than dry soil, so frost penetration will be deeper and soil temperatures colder for sandy or dry soils.

Winter colour: Plant Polyanthus, Pansies, Primulas, Snapdragons, Wallflower and Calendulas for colour - a few Poly's in a pot is all that's needed to brighten up any doorway.

Wisterias: Once Wisterias have lost leaves, prune off all long and unruly canes - because if you don't, they will entwine themselves around established branches and keep growing thicker each year.

Lawns: Growth should have slowed right down now and lawns will be at the tufty stage, but like here in this garden, lawn - mowers will still be on the go until the last of the leaves have been picked up. On the coast in early Winter there will be still some growth, so these lawns would benefit from one last feed. However, with lawns being as dry as the garden right now, any lawn food will need to be watered in.

Vegetables: On the coast, Sow Broad Beans, Garlic, Shallots and Rhubarb. In colder areas, nothing much can be planted without protection.

Fruit tree pruning:

Apple Trees: After initial shaping of Apple trees, the only pruning necessary is the removal of excess twiggy growth. Apple trees usually produce fruit on spurs, short stubby growths attached to main branches - they continue producing on the same spurs for a number of years. Pears and Cherry fruit also grow on spurs and require similar treatment. Removal of all tall new growth will keep Apple trees in good shape, with fruit being produced at picking height.

Peach & Nectarine Trees: These trees flower on new wood made the previous Summer. Prune hard to encourage new growth - otherwise fruit will be produced further and further out on the branches each year. Flower buds are plump, while growth buds are flatter. **Plum Trees:** Plum trees produce fruit on the same spurs for several years. Once shape has been established, they require little pruning, because excessive pruning can over stimulate tree growth at the expense of fruit. Remove vertical branching and water sprouts regularly. Look at a tree and it is easy to distinguish the water sprouts from the regular growth, as they grow straight up from the canopy branches and trunk and are thin and scraggy in appearance. A heavy hand when pruning may increase the number of water sprouts on the tree. When pruning Plum trees in the Winter, only remove 20 percent of the growth from the previous year. *Cheers, Linda*



NZ owned & operated
 Funeral Home

WALL'S FUNERAL SERVICES



When you need us,
 we'll be there

Plan ahead with us, ease the burden on your loved ones by pre-planning.

Ensure your wishes are recorded and carried out.

Ensuring peace of mind

Funeral prearrangement simply means that by planning now, you can ensure that your funeral reflects your personal wishes.

49 Humber Street, Oamaru
 P: 03 434 8266

E: admin@wallsfuneralservices.co.nz

We can certify your campervan, motorhome or caravan

If you're thinking of seeing more of our beautiful country in your campervan, motorhome or caravan & you'd like the freedom of being able to freedom camp, we can help. If you have all the living conveniences, to avoid fines for illegal freedom camping, your vehicle needs to be certified self-contained under the Self-Containment Standard NZS 5465:2001 & this is where we can help.

A certified self-contained vehicle meets the ablutionary and sanitary needs of the occupants for a minimum of three days, without requiring any external services or discharging waste. In order to receive the self-containment certification you need: Fresh water tanks - 12L per person for three days. A sink via a small trap/water trap connected to a watertight sealed waste water tank Grey/black wastewater tank - 12L per person for three days, vented and monitored if capacity is less than the fresh water tank Evacuation hose (3m for fitted tanks) or long enough to connect to a sealed portable tank A rubbish bin with a lid Toilet (portable or fixed). Needs to have a minimum of 3L per person for three days and be able to be used inside the campervan with the bed made up.

Call us in advance of hitting the road and we can either come to you, or you can come to us - 7 Trent Street, Oamaru.

To book phone Tania or Sam 434-2330 or go online foleys.co.nz

OAMARU + PHARMACY

It's your Pharmacy

Let's talk about LIPO-Sachets VITAMIN C

The new liposome technology delays release until reaching the area of the body for best absorption. In chilly winter months, Vitamin C is often a go-to nutrient for those feeling a little under the weather or to help boost immunity to fight off seasonal ills and chills. The human body is unable to produce its own Vitamin C and must get it from food and dietary supplements. However, unused vitamin C is eliminated from the body rather than being stored for later use, so it's important to take it regularly and in a highly absorbable format to help maintain adequate levels for your body. Kiwis have the opportunity to help optimise the potential of their vitamin C with VITAMIN C LIPO-SACHETS®; a high-dose, high-absorption Vitamin C supplement that new research claims has 80 per cent higher absorption than standard vitamin C*. VITAMIN C LIPO-SACHETS® contain liposomal Vitamin C enclosed in the patented LIPOSHELL® formula - which helps to ensure the liposomes (essentially tiny bubbles of vitamin C) are protected as they travel throughout the body without degradation from digestive enzymes, oxygen or interaction with other medications which can reduce absorption. Encapsulation within these LIPOSHELL® liposomes is crucial as it allows the Vitamin C to travel through the body's digestive system generally unaffected - delaying its release until it reaches the small intestines, the optimal site for nutrient absorption. Claimed benefits of VITAMIN C LIPO-SACHETS® include: Supporting the normal function of the immune system, Supporting recovery from winter's ills and chills, Helping to protect cells from harmful free-radicals due to its antioxidant properties. Supporting the production of collagen, which is essential for the maintenance of the skin, bloody vessels, bones, cartilage, gums, and teeth. Supporting the formation of connective tissue to assist in wound healing. Supporting iron absorption. They can be taken straight from the sachet or added to water or juice, if preferred, as the solution also disperses in water. It is sugar-free, alcohol-free and gluten-free, is suitable for vegetarians and vegans. To help boost immunity this winter, choose high-dose, high-absorption VITAMIN C LIPO-SACHETS®. Always read the label. Use only as directed. If symptoms persist consult your healthcare professional. Vitamins are supplementary to, and not a replacement for, a balanced diet.

Come and talk with us, at Oamaru Pharmacy the team is always ready to help you, with a smile and knowledgeable advice

FOLEYS

ABOVE & BEYOND
EVERY TIME

Plumbing
Gasfitting
Drainage

GET READY FOR WINTER

It's the perfect time to get your spouting & downpipes cleared & your gas hot water & heating systems serviced.

Call 434-2330 or foleys.co.nz



Rawleigh's
HEALTHCARE
Your Local Stockist
Wendy Simpson
Independent Distributor
Rose's General Store
5 Tyne Street, Oamaru
Phone 021 515205
a/h 434 8285

CranioSacral Therapy & energy healing

- * headaches, neck pain, whiplash, head injuries
- * back injuries, vertigo, soft tissue disorders, post-op
- * stress, anxiety, fatigue, PTSD
- * Babies: colic, reflux, birth trauma, unsettled

Phone **Glenda Ruddenklau**
021 386 823

Certified CranioSacral Therapist
Reiki Master/Teacher

<http://glendaruddenklau.co.nz>
(formerly BodyWork Oamaru)

Clinic dates: June 12-30; July 10-20; Aug 4-13

OAMARU + PHARMACY

Your Pharmacy



RRP \$64.99

NOW

\$49.99

+ FREE
3 PACK

LipoShell Vitamin C Lipo-Sachets

30 x 5g Gel Sachets

AFT Pharmaceuticals Ltd, Auckland

Ph: 03 434 8315

Oamaru Pharmacy, 171 Thames st, Oamaru

Ph. 03 434 8741, Mon-Fri 8am-6pm, Sat 9.30-5pm, Sun 10:30 - 4:30pm

www.pharmacy-nz.com

WE'RE A NEW BUSINESS IN OAMARU!

GRAFTED

RESIDENTIAL & COMMERCIAL JOINERY.
RENOVATIONS. BESPOKE FURNITURE.

Locally and sustainably crafted: Kitchens, laundry, bathroom cabinets, home office, furniture, built-in storage. Commercial fit-outs. Furniture renovations.

Solid wood & plywood specialists. Contemporary, functional designs.

Bespoke solutions tailored to your budget and requirements.

Holistic, individual service: from design to manufacture and installation.

Area covered: **CHC - OAM/TIU - QN/WKA - DND.**

100% NZ-owned and operated family business.

FREE FIRST NO-OBLIGATION CONSULTATION*!

*First consultation up to one hour free.

hello@thegraftedproject.com | 021 144 1918 | www.thegraftedproject.com

How to care for your oiled wooden surfaces By GRAFTED

Avoid direct contact with heat.

Heat can cause permanent burn marks and wooden surfaces to split, warp or break apart. Always use placemats, hot pads or trivets before placing hot items on wooden surfaces. Do not use a simple tea towel, it may not keep the heat away from the surface.

Be mindful of moisture.

To avoid water marks or rings on wood surfaces, remember to use a coaster and absorb spills and moisture from glasses immediately using a dry cloth.

Avoid dragging sharp or rough objects.

Use a chopping board when preparing food. Use adhesive felt pads, trivets, coasters and placemats to prevent scratches.

Never use vinegar, bleach additives, harsh chemicals or abrasives.

These products can damage the finish of the wood. Use plant-based cleaning products and non abrasive cloths. After a spot clean, always dry out the surface completely with a soft, clean, dry cloth.

Avoid leaving wooden surfaces in direct sunlight for long periods of time.

In order to maintain the natural original tones and finish of the timber for longer, consider using blinds or curtains to protect your wooden surfaces from direct sunlight.

Rejuvenate your wooden surfaces every couple of years.

Give the surface a light sand in the direction of the grain. Apply a new coat of finish. If you are unsure how to rejuvenate wood properly, we can do this for you. Contact us at www.thegraftedproject.com.

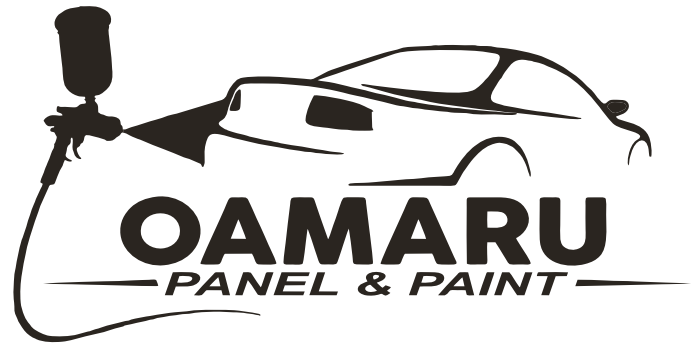


Thank you to our community for the support of the team at Oamaru Hospital during the Covid-19 response.

Due to the ongoing precautions we need to ensure are in place with COVID.

As such the hospital visiting hours are 2pm until 4pm and 6pm until 8pm, unless by prior arrangement.

Visitors are still limited to one visitor per patient.



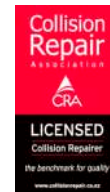
North Otago Motor Group



Approved Insurance & Private Work Welcome

(03) 433 0145 - 24-30 Severn St

Pre-Approved



Approved



Where Happiness is Homemade

All the way from Italy
Truffle Sauce, Salt, Butter, Oil
In Store Now!

MON-FRI 9AM - 5:30PM SAT 9:30AM - 2PM

10 Eden St, Oamaru

03 433 1433

info@realfoodpantry.co.nz

Like us on Facebook

Community diary

Saturday - 13th June

Meadowbank Community Stadium Bowls 14 Conway St, Oamaru. Opening Day @ 1:50pm. All bowlers & new bowlers welcome. Bowls available, ph 4340951 or 434 6340.

Sunday - 14th

Craft and Treasure Market, Scottish Hall 10 Tyne St, 10am - 2pm, To book a stall please Ph. Lisa 027 706 9902 or Wendy 021 515 205

Reformed Church Oamaru, 4 Eden St, morning service at 10:30am, followed by Sunday School; evening service at 5pm

St Paul's Church Coquet St, Oamaru. Service only 10am; COV19 - cond apply.

Tuesdays - 16th

Age Concern Gentle Exercise at 1:30pm, Orwell Street Church. \$4. Refreshments served afterwards. Age Concern Office: 03 434 7008.

AGM Notices

Awamoa Outdoor Bowling Club AGM; Sunday 28th June 2020 1pm at Club rooms, all members and new members welcome.

Oamaru Victorian Heritage Celebrations AGM Date: Tue 16th June 2020, at Whitestone Funerals, Reception Lounge, 54 Weston rd, 7pm, Nominations to be received in writing, Members & public are welcome to attend only financial members can vote. ovhcommittee@gmail.com

Public Notices

Oamaru Coffee Riders, ALL riders, all abilities catered for. For ride times & venues, please visit our FB Page or ph: 021 121 4627.

For Sale

Firewood; Split, dry pine \$65 CUM3 (2m load - \$130) Free delivery Oamaru/Weston. Ph 434 5917 (Weston Community Church Fundraiser)

Pea straw \$9 Bale; Delivery included; Oamaru Athletic Marist R.F.C. Ph. Simon 027 223 5274.

Pea straw (medium square bales) \$50 ph. 439 5334 or 027 3232926

Portaloo and Bucket truck for sale. Ph 027 20 11993.

Services

Carpet/Vinyl layer specialising in second hand carpet & repairs. Dion 0223924852.

Experienced and innovative engineer available to build or repair any project, big or small. Your place or mine. 0274437142

Experienced gardeners available for gardening & pruning. Anything considered. Ph: 027 3199310

Long grass mowing, 4WD ride on mower brushcutter. Contract or hire. 0212409766.

Smash Palace, for rental cars/vans/bikes, car parts and shuttle service. Ph. 433 1444.

Wanted

52yr old Professional Male looking for 4 days private Board ph. 027 2011993.

Tools wanted! Tradesman, carpenters, gardening tools etc. Ph. 021 450 405.

Rotary mowers and catchers, going or not Ph. 021 0460507.

SUPER SPECIAL

6m - Split Pine - \$420

Free Delivery Oamaru*

Town Boundary and Farmers/Country.

WINZ Quotes are available


BUY NOW

10m @ \$65pm

*Free delivery within 1/2 hour of our yard.

Racecourse Firewood Ltd

027 966 3636



Feijoas \$5/kg
Feijoas - Ready Now!
Also Available!
Apples, Pears and Quinces
State Hwy 83, just 2 km west of Georgetown

Classified Section Advertising Rates

AGM - Notices

\$13.50 for 2 weeks

4Sale & Services- Notices
\$13.50 plus \$4 for every line over 3.

Community Diary entries
\$13.50 plus \$4 for every line over 3.



NEW HOODIES & COATS

Bring your Dog in for a fitting



Tuesday - Friday 9am - 5pm
Saturday 10am - 2pm

Petshop - Training - Rehoming
2 Coquet St (03) 427 0174

TK HIRE 2020 LTD

LOCALLY OWNED AND OPERATED

LOCALS SUPPORTING LOCALS
FOR ALL YOUR EQUIPMENT AND PARTY HIRE

WE ARE OPEN

- Diggers
- Tractors
- Access Gear
- Gardening
- Trailers
- Table/Chairs
- Crockery/cutlery
- Bar and glassware

Monday - Friday 7.00am - 5.30pm, Saturday 7.00am - 4.00pm
Sunday 9am - 12.00pm
Ph. 03 434 9844 Email: tkhire2009@gmail.com



PH. TOM 021 0233 2002 OR 434 3326

General indoor & outdoor repairs, fencing, decking, bathroom, kitchen renos & more...

DRAFTLINE LTD Patrick Coll NZCO Arch

10 Beswick Street, Timaru
P 03 688 8455 E office@draftline.co.nz
www.draftline.co.nz



FOR ALL YOUR ARCHITECTURAL DESIGN & DRAUGHTING NEEDS

USE CODE:
OAMARU
FOR 50% OFF
DURING JUNE 2020

50% OFF
ALL HYPNOSIS AUDIO
DURING JUNE 2020



WE OFFER

- QUIT SMOKING HYPNOSIS AUDIO
- WEIGHT LOSS HYPNOSIS AUDIO
- VIRTUAL GASTRIC BAND PROGRAM
- OVERCOME SOCIAL ANXIETY HYPNOSIS
- OVERCOME INSOMNIA HYPNOSIS
- MOVING THROUGH DIVORCE HYPNOSIS
- AND MUCH MORE...

VISIT: WWW.MINDSERIES.CO

HYPNOTHERAPY | EBOOKS | SELF IMPROVEMENT GUIDES



MILLIGANS
CAFÉ & STORE

We are reopening on the 8th June
Open Monday to Friday 10am to 4pm

Enjoy our **barista-made coffees, Frosty Boy milk shakes/sundaes** and selection of cabinet food.
Store products available including
Eclipse cheese, Granny Faye's popular range, Frosty Boy, butter, ghee and milk powder.

Handy Phone Listings

Accommodation & Facilities

▶ **Holiday Home - Seaviews 'n Siestas**
Relax 10% off Moeraki 021 0827 0805

Acupuncture & Massage

▶ **Rick Loos (NZRA)**03 434 9663
Acupuncture, Massage & Reflexology

Building & Construction

▶ **DOMINATOR Garage Door Centre**
.....Quality you can trust.....03 434 8476

▶ **David Ovens Building Contractor Ltd**
.....Licensed B/P.....027 481 9424

▶ **Handyman Al's Maintenance & Repairs, qualified joiner**.....027 221 1069

▶ **MGM Handyman Services,**
Your professional handyman 022 3106294

▶ **Wayne Nuttall Builders**..... 437 2513
.....027 434 3409

Carpet & Vinyl layer

▶ **Dion**.....0223924852
specialising in second hand carpet & repairs

▶ **Flooring Specialist ...** free measure and quote
in Oamaru township 021 727 498

Chiropractor

▶ **Oamaru Chiropractic**.....021 729 868
Robert Brydges179 Thames St

▶ **Ron Sim Chiropractor**.....434 8784
.....31 Essex St, Weston

Cleaning

▶ **A1 Spic n' Span**.....434 5534
Almost ALL Cleaning027 737 8423

▶ **AA Gutter Cleaner**.....0274 335 295
For your annual Gutter Cleaning...

▶ **A+ Services NZ Ltd**.....0800 155 166
windows, gutters and carpets.. 027 7144 812

▶ **Kimis Home Cleaning**.....027 292 1023
Your home cleaning service...

▶ **Oamaru Chimney Sweep**.....434 8025
.....027 436 1315

Counselling

▶ **AYR St - Counselling**027 6861849
Kaye Mattingley...Dip.Grad.S.Sc.Otago.NZRSW.MANZASW

▶ **Barbara Liffiton**0211 807 366
.....NZ RCPN, Grad Dip GT, Prov NZAC

Dental

▶ **Oamaru Denture Clinic**434 7560
Reg Clinical Dental Technician, 4/6 Coquet St

Dressmakers

▶ **Robinson Gray**021 173 6161
.....Tailored clothing & alteration

▶ **Jenny Boon**022 034.9190
.....Clothing alterations

Driver Lessons

▶ **XTO Driver training Ltd** ..027 262 2031
.....Driving Instructor/Driving Lessons

DVD and CD

▶ **Oamaru Public Library**.....433 0850
.....cleaning service (resurface), \$5 per disc

Electricians & Appliances

▶ **Robert Jones - Electrician**. 027 445 0523
.....434 0994

▶ **Whitestone Appliances**..... 021 366 446
.....repairs.....434 6810

▶ **VES - Valley Electrical**
...Domestic & Commercial.....021 1177045

Entertainment

▶ **Sylviane's Karaoke**027 737 8360
all occasions - bookings sylgal@msn.com

Flowers

▶ **Flowerz 4 you**434 9150
all occasions, 151 Thames St...027 722 0443

Firewood

▶ **Weston Firewood**.....434 1085
.....021 052 2877

Funeral Directors

▶ **Walls Funeral Services**.....434 8266
.....49 Humber St

Gardening & lawns

▶ **Ashleys Lawn & Garden Care**.4372865
Includes ride on lawns.....0221086606

▶ **CHANGEZ Landscape Property Services**
Property maintenance - Steve 021 1148 900

▶ **Crew Cut large lawns**
Paul Houllaham..... 021 331 261

▶ **Roses, garden weeding, hedges & lawns**
Steven.....ph/txt...027 2609988

General Store

▶ **Roses General Store**021 515 205
9 Tyne St.....after hours...434 8285

Handyman

▶ **Handyman**027 642 6474
Old job, water blasting, repairs, call or text.

Insulation

▶ **Dunbars Insulation**027 789 8788
.....local and affordable

Interior Design

▶ **Tracey Vickers Design** 027 5420 215
Upholstery and Furnishings03 439 5370

Immigration

▶ **Immigration & Secretarial Services Ltd**
sylviane@isservices.nz.....027 737 8360

Joinery

▶ **Inex Joinery/Kitchens 4 Less**
335 Thames Hwy..... 4341533 or 021 1085500

▶ **Rycole Joinery** *Custom designed kitchens*
.....434 5012.....027 276 2866

Painters & Decorators

▶ **ACE Painters**027 201 1918
.....for all your painting needs.

▶ **Central Furnishers**434 8994
.....custom made drapes & binds

▶ **Don - Painter & Decorator - 25 years**
.....Call for a quotation027 2205403

Pets

▶ **Suds & Paws for dog grooming** 4345957

▶ **Paws Awhile Boarding Cattery** 4341296

▶ **Puppy Love Grooming**.....021 101 7858

▶ **Shaggy Chic Dog Grooming**
40 Ribble St 022 150 0395

Plumbers

▶ **AG Plumbing**.....021434950
.....Blocked drains & CCTV Camera

▶ **Cunningham Plumbing, Oamaru**
.....Plumbing & Drainlaying...0800 555 105

▶ **Foley Plumbers Oamaru**.....434 2330
.....Sam Boswell.....0800 303 530

▶ **Hiflo's Group** 03 434 9873
.....Plumbing, Heating & Rockgas

Professional Podiatrist

▶ **Simply Feet Podiatry**.....437 9025
.....316 Thames Hwy, open Mon-Fri

Print

▶ **Oamaru Print and Copy Ltd**.....434 9651

Progress Coach

▶ **Jenny Malcolm**.....0274 477079
.....*Helping you progress forward.*

Real Estate

▶ **RayWhite - Leona Stretch**..0274 820908
.....*Essential Realty Ltd Licensed REA 2008*

Tiling

▶ **Lakeland Tiling**.....Shane..027 312 2017
.....*Kitchens & Bathrooms - No job too small*

▶ **Transportation & Rental Vehicles**
▶ **Airport/Hospital, Oamaru Tour**
.....*transfers (Merv Aitcheson)*434 9506

▶ **Driving Miss Daisy**434 8421
..... Appointments, Dunedin & Timaru Hospital, Shopping

▶ **Oamaru Dunedin shuttle**434 3007
..... Mon - Fir, Door to Door027 2565651

▶ **Smash Palace**.....433 1444
.....Cars, Vans, Bicycle Hire & Shuttle Service

TV Installation & Repairs etc

▶ **Nathan Oakes TV, Sound, PC Install & Repairs**.....0210 237 0646 or 03 437 2474

Upholstery

▶ **Craft Upholstery**.....Kirk 021 022 98678
..... www.craftupholstery.co.nz

Window Tinting

▶ **Tint a Window**.....0800 368 468
UV fade, heat, glare & privacy.tintwindow.co.nz

Holmes Wharf Stage 1 Re-decking to Begin

"Oamaru is a fair maiden that sits beside the sea. When I thought of the harbour you have created here, I said this fair maiden holds the horn of plenty in her hand." Sir George Grey 1878. The years can take a toll on the best of us, and many of us get to that stage in life when we need more than a bit of TLC. Holmes Wharf is at that stage after 113 years of use as a coastal harbour wharf. The amount and variety of goods and commodities that have passed over its deck has been impressive, and although coastal shipping ceased in 1974, the wharf has continued to be used by fishing boats, the occasional visiting recreational boat or navy vessel, and many of us of all ages who have ventured out for a walk along it's 442 metre length in the fresh sea air. "It is no wonder that work on the wharf has been ongoing," says Waitaki Mayor Gary Kircher. "The most recent work to stabilise many of those 113 year old piles has set the foundation for the next lot of work - the replacement of more of the decking which has become unsafe and patched in recent years. As one of the most prominent structures in the historic Oamaru harbour, Holmes Wharf is a special place for many of us, so to see this work being done which will help it see out the next forty to one hundred years is exciting! It will continue to be enjoyed by Waitakians and visitors for many, many years to come." The project is planned to start on 8 June and is anticipated to take 12 weeks to complete but this may change depending on the weather and condition of sub timbers. The contractor is Banks Building Services Limited. This project involves the replacement of 5400m of 100x200 Pine H5 sub decking and decking timber to the first 112 linear metres of Holmes Wharf. The budgeted cost is \$356,000.



Waitaki Interiors

Beautiful Designs for your Home

- 15% off Luxaflex Blinds*
- Free measure and quote
- 25 years combined interior design experience

We come to you!

www.waitakiinteriors.com

29 Thames Street, Oamaru, Ph. 434 7755

*Conditions apply

Paul Familton PAINTER
Qualified tradesman with experience in all types of decorating.
Interior & Exterior work | Wallpapering
Painting | Water blasting & Moss Kill
cell **0274369831**

Locally owned & operated for over 27 years.

FREE QUOTES

We are looking for people with fresh ideas and enthusiasm to help move Grey Power North Otago forward!

Are there any people in Oamaru who are perhaps new to town, looking to get involved in community activities, recently retired or semi retired, with a bit of time on your hands, who has a community conscientious, wants to do something positive for the betterment of our 55+ population and would like to work together to move Grey Power North Otago forward in this area?

Does this sound like you?

We have many of our valued members who feel they have done their dash on committees, which is understandable however we do need at this time fresh blood, new ideas, expertise and enthusiasm on the committee to be able to move us forward or our North Otago branch may fold which is a real shame for our local members.

If you feel it could be of interest to you please phone Daphne of 4346249 for more information or a chat.

This is a great time to enquire or volunteer with our AGM just around the corner.



ONE FREE ADVERT OR **100 FREE BUSINESS CARDS**

WITH EVERY 6 AD CONTRACT BOOKED BEFORE THE END OF NOV PLUS GET A FREE ARTICLE PUBLISHED ABOUT YOUR BUSINESS!

PHONE 434 9651 OR
EMAIL INFO@PERFECTPRINT.CO.NZ

The Telegram

