

The community prefer to find their trade & service providers locally and rely on the Telegram for this.

15th September 2020

Phone 434 9651

Issue 503

## THE GARAGE DOOR CENTRE

Call Brian on 0274 335 299 or 434 8476



### DOMINATOR

YES we Sell Garage Door Systems – Free Quote  
YES we repair Garage Doors

In the Printing & Advertising industry, we are lucky enough to see new ideas being created, as people start their dreams of a new business. This gives us great pride once we start seeing the logos and printed materials we have made being used.

We also like to help these new businesses get a kick start, by offering a free article in the Oamaru Telegram to introduce themselves. If you have a new business, why not write us about 250 words and email it to us...

*Until next week, Regards the Telegram.*

Your local  
Marketing Expert  
with over 30 years  
experience

**THE BIGO**  
BUSINESS MARKETING

0800 233 576



### VAN SMIRREN ACCOUNTING

MOBILE ACCOUNTANT

Tax Services, Accounting Services, Business Consults

Contact John  
for a FREE  
Quote

Ph. 03 432 4283 or 027 431 2773

Email: [john@vansmirrenaccounting.co.nz](mailto:john@vansmirrenaccounting.co.nz)



REMINDER TO SUPERGOLD CARD HOLDERS.. 10% OFF YOUR EXTERIOR WINDOW CLEANING

- ♦ Carpets ♦ Upholstery ♦ Windows
- ♦ Full cleaning packages ♦ Residential ♦ Commercial
- ♦ Water Blasting ♦ Full House Washing
- ♦ Builder's Cleans ♦ Floors & More!

Ph. 027 737 8423 or A/H 434 5534

facebook [spicnspan.oamaru](https://www.facebook.com/spicnspan.oamaru)

Call for FREE quote

## New Zealand Petfoods

Specialising in  
Raw feeding for  
cats and Dogs



434 8484 - 16 Ouse Street



### Riteway Paint & Panel

### Oamaru Glass & Windscreens

CERTIFIED COLLISION REPAIR ASSOCIATION MEMBER IN OAMARU

- ✓ Approved Insurance Repairers
- ✓ Computerised 3-D Chassis Straightening
- ✓ Plastic Welding & Rust Repairs
- ✓ Late Model & 4WD Specialists
- ✓ Bake Oven For Factory Finish
- ✓ House glass, Double Glazing, Cat doors
- ✓ Windscreens, Auto glass



OAMARU'S EXPERTS

24 Hour Towing Service

03 434 9362

24 HOURS

Cnr Humber & Eden Sts, Oamaru · [riteway@xtra.co.nz](mailto:riteway@xtra.co.nz)



## For all your Wood Orders

Phone 03 4371888  
or Email  
oamland@xtra.co.nz

**Lotto 'n Things** (03) 437 1153  
411a Thames Highway

**New Zealand Post** 

### POST HOURS

Weekdays 8:30 am - 5.00pm  
Sat 9.00am - 4.00pm

**New Zealand Post**  



## WALL'S FUNERAL SERVICES



Plan ahead with us, ease the burden on your  
loved ones by pre-planning.

Ensure your wishes are recorded and carried out.

Ensuring peace of mind

Funeral prearrangement simply means that  
by planning now, you can ensure that your funeral  
reflects your personal wishes.

49 Humber Street, Oamaru

P: 03 434 8266

E: admin@wallsfuneralservices.co.nz

  
**BATTERY AUTO ELECTRIC**  
7 REGINA LANE OAMARU - PH: 437 0781

Batteries and all electric work on all vehicles

**Central Podiatry Limited**

**Nathan Dickson**

Cost \$44 pension or community service, house calls available  
Quality treatment of all foot and lower limb conditions  
**Community House, Oamaru Ph: 434 8862**

Such a lovely beginning to the new growing season... North Otago is looking so pretty, with masses of lovely Blossom and Daffodils everywhere, "Spring makes its own statement so loud and clear, that the gardener seems to be only one of the instruments - not the composer." ~ G. B Charlesworth.



**Cleaning out ponds** was first on the list for me last week. Leaves and old growth from pond plants needs to be removed and perhaps overflowing the pond will freshen it. Water Lilies, oxygen weed and water Irises are starting to make a move. A couple of years ago a helper and I removed all the yellow bog Iris from the big pond - this was a much needed job, because this common yellow Iris was spreading so fast and took up a quarter of the pond with its mat forming roots ( lesson learned, don't plant yellow bog Iris in a domestic pond) The place for this Iris is along the banks of a creek - the fibrous roots are fantastic at holding the sides back from erosion. Don't be tempted to add Bull Rushes to a domestic pond either - they also spread too quickly. While Water Lilies are not fully in leaf, sections can be cut and re potted. If you do not have a mesh pot specifically for aquatic plants, create holes in the sides of a plastic pot and use that. Line the pot with sacking or woven fabric and 3/4 fill with garden soil and a small amount of slow release fertilizer in the centre. Plant Water Lily section, then add stones or gravel to the top of the pot and submerge to the bottom of the pond. Now the sap is up, remove unwanted growth from Prunus trees, (Flowering Cherry). This is said to be the best time to make cuts in Prunus to avoid the spread of Silver Leaf, which can spread from tree to tree while in the dormant stage. Always on a warm dry day, cut out any weak growth and cross over branches before they grow thick.

**Cut out all dead branches from beneath Kilmarnock Willows** if you have them. This is the ornamental Pussy Willow, once used often in small gardens. Each new branch grows out from the bud of last year's growth. All subsequent year's growth dies and builds up under the new growth. The grafted weeping tree is much nicer to look at, with all those dead branches removed and it is easier to do this when bare of leaves.

**Keep folia feeding new Spring growing plants** (other than bulbs - they store their own food ). Liquid plant food will encourage strong growth. Now plant, plant, plant all the pretty Spring seedlings on offer now and sow seeds for Summer flowering, to save on buying seedlings later in the year. **Lawns**, Lawns benefit greatly from an early Spring feed of lawn fertilizer, but this works best with rain to wash it in. Unfortunately, too much soil is removed from new building sites these days, which means clay is not as far down, creating a solid moisture holding pan under soil. Gypsum ( soluble lime) will work on opening up clay without changing the ph of soil. Frosts will soon be over, allowing new lawns to be sown. Remember to sow seed thickly, as annual weed seeds will be competing.

**Vegetables:** Soil is warming with the days becoming longer - plants are now coming to life, so heaps to do in the veg garden as you ready it for planting. Break up and rake clods to fine soil down for direct seed sowing. Get Pumpkin, Butternut and Squash and Corn seeds started now under protection, until frosts finish - they need a long warm growing season to grow and ripen. It's great to be planting Salad veg again, especially while there are still no white Butterflies or aphids about. As an early season deterrent, start spraying fish emulsion on both veg and flowering seedlings - this will feed the plants and repel pests by fooling them into thinking their favorite food is now protein, not vegetable - repeat after rain. Get sprouted Potatoes in the ground. When leaves appear, start mounding over them to encourage leaves and stalks to grow longer producing more Potatoes. Keep water up to rows during dry spells. **Fruit:** All deciduous fruit trees can still be planted in September while the plants are just coming out of dormancy.

**Strawberries:** Delicious Strawberries are easy to grow - as little as 25 plants can yield more than 50 pounds... Strawberries need at least six hours of direct sun daily and will do well with a dressing of fertilizer with extra Potassium, regular irrigation and slightly acidic soil and covering the bed in straw, will keep the weeds down and the fruit clean. All other Berries on offer should be planted now. Cheers, Linda.





### Burns Memorial Art Exhibition

**Saturday 12 September - Sunday 18 October 2020**

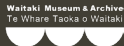
It is 50 years of the Burns exhibition, let's celebrate the wonderful work created by students around the Waitaki.

### Friends of the Forrester Lunchtime recital

**Friday 18 September 2020**

Allen Hogan - flute, June Cameron - accompanist.

Oamaru Opera House, 12:15pm - 1:00pm.



## Do you have a hidden Computer Virus

McAfee Stinger is a standalone utility used to detect and remove specific viruses. It's not a substitute for full antivirus protection, but a specialized tool to assist administrators and users when dealing with infected system.

This can be downloaded at:

[www.mcafee.com/enterprise/en-us/downloads/free-tools/stinger.html](http://www.mcafee.com/enterprise/en-us/downloads/free-tools/stinger.html)

McAfee Stinger search for particular trojan or rootkit that can trick regular antivirus software and be left undetected, but it won't destroy every kind of threat for your PC, so you'd better use it alongside a fully featured antivirus application.



## Oamaru Hospital - Patients requiring medical assistance at our Emergency Department.

*Please do the following:*

- Avoid the main reception area and go directly to the Emergency Department entrance beside our Ambulance Bay at all times, 24/7.
- If you have any cold or flu symptoms please wear a mask or put one on at the Emergency Entrance door & apply hand sanitiser.
- Please note only one support person with the patient. Also any visitors to the hospital will be screened at the doors.
- If you develop symptoms consistent with COVID-19, call your GP or 0800 VIRUS19 (0800 847 8719) to get tested. You can get a free test at most GPs – call ahead to find out if you need a test and follow their advice.

**For COVID-19 health advice and information, contact the Healthline team (for free) on 0800 358 5453.**

# Musical Theatre Oamaru CHILDREN'S THEATRE PRESENTS

## Oamaru Repertory Theatre

**October 7, 8, 9,**

**10 & 11 at 2.00pm**

Box Office open from

Monday September 28th

**12.00pm – 2.00pm weekdays**

and 1 hour before each show.

Directed by Pat Gunn



**All tickets \$10.00**



MUSICAL THEATRE  
OAMARU

**Bookings now  
open online at  
iTICKET.co.nz**

## Medway St and Steward St carparks return to paid parking

Council have today voted for an early return to paid parking in the Medway and Steward St carparks.

The free parking was to continue until 30 September, but due to complaints from numerous residents, usual parking fees will be payable from tomorrow, 2 September.

Free parking will continue in all other areas until 30 September. Time restricted parking remains as normal.

During the free parking initiative, members of the public have experienced difficulty in finding appropriate parking in the vicinity of the Oamaru hospital and the Waitaki Aquatic Centre which has meant patients are missing or turning up late for hospital appointments and members of the public for swimming-related activities. This is in part due to members of the public using the free parking initiative to park their vehicles all day or for extended periods in the Medway and Steward St car parks. Mayor Gary Kircher was disappointed that the situation had come to this. "Councillors were very reluctant to return to paid parking earlier than expected, but too much all-day parking in the two carparks has left us with no choice. There have been repeated requests to leave space for those who need it to visit shops, the hospital, and the pool, but to no avail." Regulatory Manager Andrew Bardsley said, "The decision will alleviate the congestion being experienced in the Medway and Steward St car parks."

**OAMARU**  
**print&copy**

we print

**BUSINESS  
CARDS**

**Phone 03 434 9651**

# OAMARU + PHARMACY

*Your Pharmacy*

**NEW ZEALAND'S NO.1  
SELLING SUPPLEMENT  
BRAND IN PHARMACIES\***

**30% off\*\*** GO healthy  
Full Range

**GO**<sup>®</sup>  
healthy



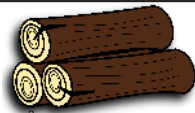
Oamaru Pharmacy, 171 Thames st, Oamaru  
Ph. 03 434 8741, Monday - Friday 8am - 6pm  
Saturday 9.30 - 5pm, Sunday 10:30 - 4:30pm  
[www.pharmacy-nz.com](http://www.pharmacy-nz.com)

Proudly made by GO Healthy in New Zealand from select imported ingredients. Always read the label and use as directed. Supplementary to a balanced diet. If symptoms persist seek the advice of a Healthcare Professional. GO Healthy, Wellington. TAPS PP5677. \*IRI New Zealand survey. GO Healthy is the #1 selling brand in pharmacies, MAT to 21/04/2019.

gohealthy.co.nz GoHealthyNZ

**\*\*Valid until 16/09-23/09. Terms & Conditions Apply.**

# Fire Wood



Free delivery Waimate to Oamaru 3m<sup>3</sup>/6m<sup>3</sup> loads  
Stacking available at extra cost

Unseasoned (green)     Dry (when available)

Pine \$50 p/m <sup>3</sup>	\$60 p/m <sup>3</sup>
O.M.P \$55 p/m <sup>3</sup>	\$75 p/m <sup>3</sup>
Macro \$65 p/m <sup>3</sup>	\$85 p/m <sup>3</sup>
Bluegum \$75 p/m <sup>3</sup>	\$95 p/m <sup>3</sup>

Call Karl 027 629 7664

Get in now and avoid winter prices  
Qualified tree felling, portable mill available,  
macro timber sales

## CranioSacral Therapy & energy healing

- \* headaches, neck pain, whiplash, head injuries
- \* back injuries, vertigo, soft tissue disorders, post-op
- \* stress, anxiety, fatigue, PTSD
- \* Babies: colic, reflux, birth trauma, unsettled

Phone **Glenda Ruddenklau**  
**021 386 823**

Certified CranioSacral Therapist  
Reiki Master/Teacher

<http://glendaruddenklau.co.nz>  
(formerly BodyWork Oamaru)

**Clinic dates:**     Sept 19 - Oct 1, October 17-29,  
November 14-26, December 12-17

## Pieces Of April

By April Hayes Dickson  
While my back was turned Spring went and sprung. Without warning, daffodils and lambs have already popped, the days have become longer and I haven't even shaved my legs yet. Winter and its accompanying excuse to live in opaque tights is every girl's friend. A time to go blissfully razor free.

The onset of winter gives us licence to pretty much swaddle from head to toe. There are chilly North Otago days when the only part of the female form publicly on display are our eyes wedged between beanie and scarf.

From June to September, while we continue to manicure, pull and pluck our facial hair, everything from the neck down is left to its own devices.

These bristly months can be uncomfortable for our partners, especially when bare legs are rubbed up against each other unexpectedly in the middle of the night. The KOR (King of the Remote) has been known to yelp in the dark wondering who put a hedgehog in our bed.

Spring is traditionally seen as a time of rebirth often characterized by frolicking through forests. All the great poets have had a crack at expressing the rapture associated with the seasonal change. From the Bills (Shakespeare and Blake) to the Bobs (Frost and Browning) Spring has been lyrically waxed for centuries. And while I'm as happy as the next woman to welcome the joy of Spring, I think I'll wait until I'm fully waxed before I go gamboling again.

[piecesofapril@gmail.com](mailto:piecesofapril@gmail.com)

## Get ready to Grumble, Waitaki!

Feel like you haven't had a chance to talk to council for a while? We feel that way too! With Covid and all the ins and outs of social distancing etc., March was the last time we were able to have a proper chin wag with residents and hear from them directly about the things that might be worrying them, or need fixing. Which is why we've come up with a tongue-in-cheek public engagement called 'Lets Get Ready to Grumble,' designed to give you the opportunity to come and have a chat with Councillors and Council Communications staff; air any peevs, tell us what you think, so we can understand the hot topics and start to offer solutions where possible. Last Sunday September 13 Wanda the conversation caravan was at the Oamaru Farmers Market and now the grumble gathering is hitting the road for Palmerston and Kurow.

To sweeten the grumbling process there will be free apple crumble with your grumbles. Mayor Gary Kircher says, "It's always important to keep in touch with people's concerns, and this latest initiative from our Comms team will be a great opportunity for you to engage easily with us. I'm looking forward to chatting about what you would like to see done, or done better, and I will be with Wanda at a couple of the sessions. Come and see us – and you don't even have to have a grumble!"

**Rawleigh's**  
HEALTHCARE  
Your Local Stockist  
**Wendy Simpson**  
Independent Distributor  
**Rose's General Store**  
5 Tyne Street, Oamaru  
Phone 021 515205  
a/h 434 8285

## North Otago Motor Group

### Spray Painter



**North Otago Motor Group** is the holder of the Toyota and Holden vehicle franchises for North Otago.

A vacancy exists in our busy Panelshop for a fully qualified  
**Spray Painter**

Please direct all inquiries to:

**Peter Robinson**

**Ph. 03 433 0143 or 027 434 4913**

or write to:

**North Otago Motor Group**

**PO Box 436, Oamaru**





**SHOP LOCAL.  
EAT LOCAL.  
SPEND LOCAL.  
ENJOY LOCAL.**

**SUPPORT THE  
LOCAL BUSINESSES  
WHO SUPPORT THE AREA  
WHERE YOU LIVE,  
WORK AND PLAY.**

[www.shopoamaru.co.nz](http://www.shopoamaru.co.nz)

# North Otago Motor Group

# CAR OF THE WEEK



## Toyota YARIS Hatch GX

Petrol - Continuous Variable

**\$25,990** (\$144 P/W)\*



**Mon-Fri 8am to 5:30pm, Sat 9am to 12pm**

\*Based on Classic Finance with a 20% deposit over 60 months at 9.95% interest. \$409.20 establishment fee and normal Toyota Financial Services lending criteria apply

## Motoring with Peter

Hi! JPeter here, North Otago Motor Group. This weeks car of the week is the new generation 2020 Yaris Hatch GX 1.5ltr, smart zippy, super safe and fun. Drive away from \$25,990, petrol and hybrid. Come in and test drive today... We have over 35 years LOCAL experience in the industry and our team, Peter, Martin and myself are here to help you. Being local has huge advantages for you. We are close to where you live; you can pop in and see us or we can come to you - plus we have a service and parts department. See us any day including Saturday 9am-12, or call us to make an appointment outside working hours. Loads of options of vehicles too, from small run-bouts, SUV's to 4x4's. Plus we can cover everything from finance, insurance and extended warranties. Have a great week. *Peter 0800660070*



Peter

## Excelsior Petanque Club

On Sunday 30th of August the Oamaru Excelsior Petanque Club hosted a Drawn Triples Tournament played between 10 teams of players from the Alexandra, Caversham, St Kilda, Waikouaiti, Timaru and Excelsior clubs.

The players were drawn into the 10 teams so that all players teamed up with members of 2 other clubs but not with those from their own club.

The format of the tournament was that of a round robin draw where all teams played the other 9 teams drawn rather than the usual qualifying, semi final and finals format.

The great weather helped to ensure that a great time was enjoyed by all.

The results were as follows; First place to Kay George (Caversham), David Beer (Alexandra) Sandy McCulloch (Excelsior) with 8 wins, 2nd place to Carol Reed, (Caversham), Wendy Farlem (St Kilda) Herb Tonkin (Excelsior) with 6 wins plus 38 differential points, 3rd place to Jan Milford (Caversham), Lyn Andrews (St Kilda) Suzanne Tonkin (Excelsior) 6 wins plus 24 points and in 4th place with 6 wins plus 20 points was Bev Kendal (Caversham) Mavis Thompson (Timaru) and Alec Clarke (Excelsior).

## OAMARU + PHARMACY

*It's your Pharmacy*

### Let's talk about Cervical cancer

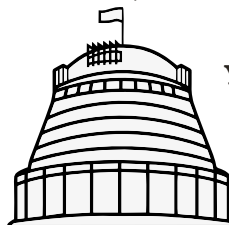
In New Zealand, about 160 women develop cervical cancer each year – and about 50 die from it. Cervical cancer is caused by some strains of the human papillomavirus (HPV). HPV is a very common virus that is passed on by sexual contact. Cervical cancer is cancer of the cervix, which is the lower part of the uterus or womb. Cervical cancer develops slowly over time, usually taking many years, when abnormal cells grow on the cervix. These abnormal cells are caused by infection with high-risk types of HPV. You can help protect yourself against cervical cancer by having regular cervical smear tests. Cervical smear tests can detect abnormal cells that may one day become cancerous. All women between 25 and 69 who have ever been sexually active should have regular smear tests. Women who have had abnormal changes may need to have more frequent tests for a period of time. Each year there are around 25,000 abnormal smear test results among New Zealand women.

Without cervical screening about one out of 90 women will develop cervical cancer and one out of 200 will die from it. With cervical screening about one out of 570 will develop cervical cancer and one out of 1280 will die from it.

Early changes in the cells of the cervix don't usually cause symptoms, which is why doctors encourage women to have regular cervical smear tests. If early cell changes develop into cervical cancer, the most common signs include vaginal bleeding between periods, bleeding after intercourse, pain during intercourse, unusual vaginal discharge, vaginal bleeding after menopause, excessive tiredness, leg pain or swelling or lower back pain,

All these symptoms are common to many conditions and may not mean you have cervical cancer. However, if you have these symptoms, have them checked by your doctor.

Treatments for cervical cancer include surgery, radiation treatment, chemotherapy or a combination of these treatments.



**You're invited to join us at the Opera House**

**7pm, Tuesday Sept 29**

for Oamaru Rotary's Waitaki Electorate Candidates meeting

**Meet the Candidates. Hear their policies.**

**Ask your questions.**

# RealFood Pantry

Where Happiness is Homemade



**INSTORE NOW!**

**MON-FRI 9AM - 5:30PM SAT 9:30AM - 2PM**

10 Eden St, Oamaru

03 433 1433

Like us on Facebook 

## Realfood Pantry - Lord Murry Loaf

1 cup sugar, 1 egg, 2 cups flour

1 cup fruit, 57g butter, 1 teaspoon baking powder

1 cup boiling water, 1 teaspoon baking soda

2 mashed bananas, ½ cup walnuts, vanilla essence

Mix fruit, sugar, essence & egg beat well, mix butter with water & baking soda, add to fruit, stir in mashed bananas and walnuts, lastly stir in flour and baking powder.

Bake 1 hour at 175c.



**Custom made**  
**Your photos**

**OAMARU**  
**print&copy**

**Personalised Calendars**  
**Phone 03 434 9651**



PH. TOM 021 0233 2002 OR 434 3326

General indoor & outdoor repairs, fencing, decking, bathroom, kitchen renos & more...

## 50 years of the Burns Memorial Art Exhibition

This year the Forrester Gallery is celebrating half a century of the annual exhibition the Burns Memorial.

The Burns Memorial Exhibition is always a highlight of the galleries programme. Last year we ran the exhibition online due to the gallery being closed for refurbishment, so we are really looking forward to having a show back in the gallery this year. It is our most popular show and a time where we have our highest numbers of visitors; children with their families, grandparents, early childhood centres and schools. Elizabeth King, Forrester Gallery Educator and Engagement Officer says "I am always astounded by the variety of work that gets brought into the gallery. Teachers go to a huge effort to research new ideas and techniques. So far this year I know we have a dinner party installation, clay pinch pots and fish linocuts. It is always great seeing the secondary school folio work come in too. The work not only inspires young artists, but we often get teachers in wanting to know how things were made.

This year we were planning a party opening with cake, activities and cultural performances but due to Covid we have decided to run this next year. It was wonderful that we had offers of groups wanting to perform and we look forward to hosting an opening party for the exhibition in 2021.

Because this year is Burns 50, we want to find out some of the history of the exhibition which we will share in a series of blogs during the exhibition. "The exhibition started in 1970 and is named after George Burns (1903-1970). Mr Burns, who was born and educated in Oamaru, was editor for the Christchurch Star-Sun. During his time there The Star ran an annual schools' art exhibition throughout the South Island. Although this South Island exhibition no longer takes place the Burns Memorial Art Exhibition is held each year in memory of George Burns. They were first run by the North Otago Art Society and held in the Athenaeum above the Waitaki Museum. In 1984 the venue changed to the Forrester Gallery where they have been held ever since.

Ms King said "One little gem I have found when I was researching the exhibition was an OamaruMail article from 1987. Featured was teacher Jean Leggett talking to her pupils Anna McIntosh and Helen Polson. Anna is now Head of The Arts at Waitaki Girls High School. If you grew up in the Waitaki do you remember having art in the Burns memorial Exhibition. Did you visit the exhibition- who was your Art teacher? Did you carry on with your Art? Please get in touch with the gallery if you want to share your memories or photographs of the Burns Memorial Art Exhibition."

The exhibition opens on Saturday 12 September and will run until Sunday 18 October.

For more information contact [eking@waitaki.govt.nz](mailto:eking@waitaki.govt.nz) or 433 0853 The staff at the Forrester Gallery want to thank all the students and their teachers for their hard mahi putting together the artwork for the exhibition.





## Is poor gut health affecting your mental focus?

179 Thames St, Ph 434 9663

### Health 2000 - Poor gut health

BY GLEN CURD, RESEARCHER & LECTURER

if you have overindulged a little too much in comfort foods lately, the permeable membrane of your gut wall may have taken a hammering! it's now time for some rest and restoration for both you and your insides.

Your gut membrane can be compromised by overindulgence in sugary foods, food allergies, stress, infections and antibiotics. Your intestinal cells which usually form tight junctions may become less impermeable than they should. This can result in a range of health issues. With many of your brain's neurotransmitters made first in your gut, issues here can be the cause of fuzzy thinking, lack of mental focus, tiredness and irritability.

Support a healthy gut wall with HealthZone Gut Repair Zone. It includes a comprehensive range of amino acids, vitamins, minerals, and other nutrients to support intestinal bowel wall health and repair. In an easy-to-take, mixed-berry flavour, it's especially helpful for people with a tendency for bowel irregularities and digestive bloating or discomfort.

#### Fast Cleansing

When your body does not eliminate waste as quickly as it should, it can lead to symptoms such as neck and head tension, joint stiffness, bloating and general discomfort. Often these symptoms are exacerbated where gut problems exist. For fast and effective bowel support, take Healthzone Bowel Zone at night to support efficient bowel regularity. This will assist in restoring healthy regular morning bowel motions for better wellbeing.



**Get your business listed with us!**

**Get Listed in the Telegram!**

*\$154 inc of GST for 6 months*

*\$266 inc of GST for one year.*

**The Telegram**  
Oamaru  
100% locally owned 8,000 homes weekly

### FreeWi-Fi for Waitaki?

Following a recommendation of the Performance, Audit and Risk (PAR) committee this week, Council will decide at the full meeting on 1

September whether to support the establishment of free public Wi-Fi for the district,

implemented by the Information Services team and limited initially to Omarama, the Oamaru Harbour zone and Palmerston, with a proviso that local business are engaged in the process.

Mayor for Waitaki Gary Kircher said, "Council has been talking about this for the past 5 years or more, but it didn't happen due to competing priorities. The original vision was to have each community along the A2O cycle trail as a free Wi-Fi hub in a process which would ultimately see it rolled out to all of Waitaki's smaller communities. The hope had been to work with existing operators and providers to get a cost-effective network across the district. That has proven too difficult but we will still progress the plan, albeit at a slower rate. If we are able to work with others to expand the network more quickly, then we welcome that opportunity."

The Wi-Fi project was originally included in the Information Services Group Programme of Work schedule. The purpose of the project was to 1) help bridge the 'digital divide' so more residents in the district could have access to the internet and 2) help with economic resilience (existing businesses) and economic development (new businesses) by promoting businesses and activities within the district to residents, as well as domestic and international visitors. When people use the free Wi-Fi, they will see 'What's on in the Waitaki' when they log on. The project was ranked as lower priority for a couple of years, but last year elected members confirmed increasing interest in having free Wi-Fi available in the district. Now, with the impact of COVID-19, it is even more important that local citizens (as well as visitors) who may be struggling financially and yet need access to the internet for job search and job applications, have an option of free access to Wi-Fi.

Mayor Kircher said Council, community, local businesses and visitors will benefit from the implementation of Wi-Fi to access a public network, access information about Waitaki offerings "and, of course, be better able to share great photos of the district's beauty on Instagram and other social media."



## Community diary

### Wednesday 16th September

**Excelsior Petanque Club;** Ph 4372557, Wed & Sun 1-3pm, Excelsior Rugby & Sports Club.

**Free JP for certifying documents, affidavits, & declarations.** 10-1pm at the Public Library.

**North Otago Orchid Society** meetings held at the St John's meeting room at 1:30pm. Exe st. New members welcome, Ph. 434 7324.

### Thursday 17th

**N.O. Asthma Society Respiratory Exercise Class,** 10am, St John Hall, Exe St. Ph 437 2673.

**Migrant Meet and Share,** 10.30am at the Landsar Rooms in Severn St. Build connections & learn about life in Waitaki. Ph Maria 021 066 5143.

### Friday 18th

**AA;** Orwell St Chapel, 12noon. Ph. 0277227818.

### Saturday 19th

**Newcomers Coffee Group** at 10am at either the Opera House or The Brydone. Ph 0272428643

### Sunday 20th

**AA Meeting;** Orwell St Chapel, 6pm. Ph. 0277227818 or 4372337.

**Oamaru Baptist Church;** Sandringham St, Service at 10am. All welcome.

**Reformed Church Oamaru,** 4 Eden St, morning service at 10:30am, followed by Sunday School, afternoon service at 5.00pm.

**St Paul's Church,** Coquet St, service and kids club. All welcome, 10am.

**Taize Service;** 7pm St Luke's Church cnr Tees and Itchen Streets.

### Monday 21st

**Genealogy help** by local genealogist - at the Oamaru library 10 am - 12noon.

**Tokarahi Spinners and Weavers** meeting. Ph. Christine 434 2223

**Waitaki Woodturners;** meet at 1 pm at our clubrooms - Oamaru Race Course & **Tuesday** evening at 7 pm. Ph 439 5795.

### Tuesdays 22nd

**AA Meeting;** Orwell St Chapel, 7:30pm, Ph. 434 0227 or Ph. 432 4191.

**Age Concern Gentle Exercise.** 1:30 - 2:45pm Seated exercise class with music, followed by afternoon tea. Offered during Alert Level 2 with appropriate precautions. Orwell St Church.

**U3A Waitaki,** talks, discussions for enquiring minds, 2-4pm. St Johns Hall Lounge. Ph. 434 6613.

## Public Notices

**Oamaru Coffee Riders,** ALL riders, all abilities catered for. For ride times & venues. ph 0211214627



**Get your rental property up to scratch.**

**Mammoth**  
MODERN INSULATION

**DUNBAR'S INSULATION**

**Your local Heat Saving Specialists**  
Call today!! 027 78 98 788 or book online  
[www.dunbarsinsulation.co.nz](http://www.dunbarsinsulation.co.nz)

## AGM Notices

**Creative Fibre North Otago Spinners & Weavers** Monday 28th September 10am St Luke's Hall, Wharfe Street. Ph 03 437 2501.

**Oamaru Steam & Rail Society AGM** 24th September at 7:30pm OSR Clubrooms, 1b Humber St. followed by supper, all welcome.

## Services

**Builder Available;** License Builder Neil Miller Phone 027 405 7147.

**Carpet/Vinyl layer** second hand carpet & repairs. Dion 0223924852.

**Clairvoyant Rose 4 Readings;** 021 126 3329

**Office space for hire** by the month, day or hour. The Business Hive. Ph: 398 2400.

**Smash Palace,** for rental cars/vans/bikes, car parts and shuttle service. Ph. 433 1444.

## For Sale

**\*\*\*BE YOUR OWN BOSS\*\*\* Food caravan** fully kitted out and ready \$14,000, Call/txt 021 044 8209 to view or enquire.

**Ladies Bicycle Advanti Discovery** small frame. \$250 o.n.o. Please phone 027 263 7334.

**Get your garden ready for Spring with Pig Manure.** Fundraiser for the North Otago Primary School Boys South Island Cricket Tournament. \$6 per 20kg size bag. Free Delivery in town boundary. Collection/Delivery Sun 20<sup>th</sup> Sep 1pm to 2pm from st Kevin's college. Enquires to 021 732 913.

**Preserving Jars - Green & Gold tops** \$3 each Ph. 027 7756 6081.

## Wanted

**Tools wanted!** Tradesman, carpenters, gardening tools etc. Ph. 021 450 405.



**\$65/m**  
**UNSEASONED FIREWOOD**

**Next years Firewood**  
Contact Richard  
0277019376

**THAI FOOD**

 [BANGKOKRECIPE.CO.NZ](http://BANGKOKRECIPE.CO.NZ) 

 03 434 6245  220 THAMES ST.

**BANGKOK** recipe

## Work Wanted

**Admin/Finance Administrator** seeking work for full or part-time work. Call 027 630 6448.

**I am looking to Mow Lawns** around Oamaru. Ph. or txt 022 0587048.

**The Telegram**  
is online at

**OAMARU**  **NET** <sup>DOT</sup> **NZ**

**Enquire today**

**Oamaru Print and Copy Ltd**

146 Thames St, Oamaru.

Ph 03 434 9651

## North Otago Motor Group

19 years Rental Experience in North Otago



## RENTALS

**24 hours - 7 days**

**Rentals by the hour, day or longer**

- 8-12 Seater Vans
- Shuttle Trailer Hire
- Bike Trailer Hire
- Car Rental

 North Otago Motor Group Rentals Vehicles

(03) 433 0146 – (0274) 872 048



## Handy Phone Listings

### Accommodation & Facilities

- ▶ **Holiday Home - Seaviews 'n Siestas**  
Relax 10' off Moeraki .....021 0827 0805

### Acupuncture & Massage

- ▶ **Rick Loos (NZRA)** .....03 434 9663  
Acupuncture, Massage & Reflexology

### Building & Construction

- ▶ **DOMINATOR Garage Door Centre**  
.....Quality you can trust.....03 434 8476
- ▶ **David Ovens Building Contractor Ltd**  
.....Licensed B/P.....027 481 9424
- ▶ **Handyman Al's Maintenance & Repairs, qualified joiner**.....027 221 1069
- ▶ **MGM Handyman Services,**  
*Your professional handyman* 022 3106294
- ▶ **Wayne Nuttall Builders**..... 437 2513  
.....027 434 3409

### Carpet & Vinyl layer

- ▶ **Dion**.....0223924852  
specialising in second hand carpet & repairs
- ▶ **Flooring Specialist ...** free measure and quote  
in Oamaru township ..... 021 727 498

### Chiropractor

- ▶ **Oamaru Chiropractic**.....021 729 868  
*Robert Brydges* .....179 Thames St
- ▶ **Ron Sim Chiropractor**.....434 8784  
.....31 Essex St, Weston

### Cleaning

- ▶ **A1 Spic n' Span**.....434 5534  
*Almost ALL Cleaning* .....027 737 8423
- ▶ **AA Gutter Cleaner**.....0274 335 295  
*For your annual Gutter Cleaning...*
- ▶ **A+ Services NZ Ltd**.....0800 155 166  
*windows, gutters and carpets*..... 027 7144 812
- ▶ **Kimis Home Cleaning**.....027 292 1023  
*Your home cleaning service....*

### Counselling

- ▶ **AYR St - Counselling** .....027 6861849  
*Kaye Mattingley...Dip, Grad.S.Sc. Otago.NZRSW. MANZASW*
- ▶ **Barbara Liffiton** .....0211 807 366  
.....NZ RCPN, Grad Dip GT, Prov NZAC

### Dental

- ▶ **Oamaru Denture Clinic** .....434 7560  
Reg Clinical Dental Technician, 4/6 Coquet St

### Dressmakers

- ▶ **Robinson Gray** .....021 173 6161  
.....Tailored clothing & alteration
- ▶ **Jenny Boon** .....022 034.9190  
.....Clothing alterations

### Driver Lessons

- ▶ **XTO Driver training Ltd** ..027 262 2031  
.....Driving Instructor/Driving Lessons

### DVD and CD

- ▶ **Oamaru Public Library**.....433 0850  
.....cleaning service (resurface), \$5 per disc

## Electricians & Appliances

- ▶ **Robert Jones - Electrician**. 027 445 0523  
.....434 0994
- ▶ **Whitestone Appliances**..... 021 366 446  
.....repairs.....434 6810

## Entertainment

- ▶ **Sylviane's Karaoke** .....027 737 8360  
all occasions - bookings [sylgal@msn.com](mailto:sylgal@msn.com)

## Flowers

- ▶ **Flowerz 4 you** .....434 9150  
all occasions, 151 Thames St...027 722 0443

## Firewood

- ▶ **Weston Firewood**.....434 1085  
.....021 052 2877

## Funeral Directors

- ▶ **Walls Funeral Services**.....434 8266  
.....49 Humber St

## Gardening & lawns

- ▶ **Ashleys Lawn & Garden Care**.4372865  
*Includes ride on lawns*.....0221086606
- ▶ **CHANGEZ Landscape Property Services**  
*Property maintenance - Steve* 021 1148 900
- ▶ **Crew Cut large lawns**  
*Paul Houllaham*..... 021 331 261
- ▶ **Oamaru Garden Maintenance**  
*Richard Kennedy* .....021 0474758
- ▶ **Roses, garden weeding, hedges & lawns**  
*Steven*......ph/txt....027 2609988

## General Store

- ▶ **Roses General Store** .....021 515 205  
*9 Tyne St*.....after hours...434 8285

## Handyman

- ▶ **Handyman** .....027 642 6474  
*Old job, water blasting, repairs, call or text.*

## Insulation

- ▶ **Dunbars Insulation** .....027 789 8788  
.....local and affordable

## Interior Design

- ▶ **Tracey Vickers Design** ..... 027 5420 215  
*Upholstery and Furnishings* .....03 439 5370
- ▶ **Waitaki Interiors**..... 434 7755  
*All window furnishings*

## Immigration

- ▶ **Immigration & Secretarial Services Ltd**  
*sylviane@isservices.nz*.....027 737 8360

## Joinery

- ▶ **Inex Joinery/Kitchens 4 Less**  
*335 Thames Hwy*..... 4341533 or 021 1085500
- ▶ **Rycole Joinery Custom designed kitchens**  
.....434 5012.....027 276 2866

## Mobile Travel Broker

- ▶ **Jannine Hore** .....439 4230  
*The Travel Brokers - member of Helloworld*
- ▶ **Lynne Sinclair, NZ Travel Brokers**.....  
*Longest established broker in North Otago*..432 4172

## Painters & Decorators

- ▶ **ACE Painters** .....027 201 1918  
....for all your painting needs.
- ▶ **Central Furnishers** .....434 8994  
....custom made drapes & binds
- ▶ **Don - Painter & Decorator - 25 years**  
....Call for a quotation .....027 2205403
- ▶ **Solid Plastering** .....027 3137250  
....David Caldwell Plastering

## Pets

- ▶ **Suds & Paws for dog grooming** 4345957
- ▶ **Paws Awhile Boarding Cattery** 4341296
- ▶ **Shaggy Chic Dog Grooming**  
40 Ribble St ..... 022 150 0395

## Plumbers

- ▶ **AG Plumbing**.....021434950  
.....Blocked drains & CCTV Camera
- ▶ **Cunningham Plumbing, Oamaru**  
.....Plumbing & Drainlaying...0800 555 105
- ▶ **Foley Plumbers Oamaru**.....434 2330  
.....Sam Boswell.....0800 303 530
- ▶ **Hiflo's Group** ..... 03 434 9873  
.....Plumbing, Heating & Rockgas

## Professional Podiatrist

- ▶ **Simply Feet Podiatry**.....437 9025  
.....316 Thames Hwy, open Mon-Fri

## Picture Framers, Printing

- ▶ **Waimate Picture Framers**...03 6898568  
*For all your framing requirements*...0272918763
- ▶ **Oamaru Print and Copy Ltd**...434 9651  
*From business cards to larger posters print & design*

## Progress Coach

- ▶ **Jenny Malcolm**.....0274 477079  
.....*Helping you progress forward.*

## Real Estate

- ▶ **RayWhite - Leona Stretch**..0274 820908  
.....*Essential Realty Ltd Licensed REA 2008*

## Transportation & Rental Vehicles

- ▶ **Airport/Hospital, Oamaru Tour**...434 9506  
.....*transfers (Merv Aitcheson)* .....0272268347
- ▶ **Driving Miss Daisy** .....434 8421  
.... Appointments, Dunedin & Timaru Hospital, Shopping
- ▶ **Oamaru Dunedin shuttle** .....434 3007  
.... Mon - Fri, Door to Door .....027 2565651
- ▶ **Smash Palace**.....433 1444  
.....Cars, Vans, Bicycle Hire & Shuttle Service

## TV Installation & Repairs etc

- ▶ **Nathan Oakes TV, Sound, PC Install & Repairs**.....0210 237 0646 or 03 437 2474

## Upholstery

- ▶ **Craft Upholstery**.....Kirk 021 022 98678  
..... [www.craftupholstery.co.nz](http://www.craftupholstery.co.nz)

## Window Tinting

- ▶ **Tint a Window**.....0800 368 468  
UV fade, heat, glare & privacy. [tintawindow.co.nz](http://tintawindow.co.nz)



# NORTH OTAGO PHARMACY

VOTED BEST CUSTOMER SERVICE 2019

OPEN 7 DAYS

Mon-Fri 8:30am - 6pm  
Sat 9am - 5pm  
Sun 10am - 4:30pm

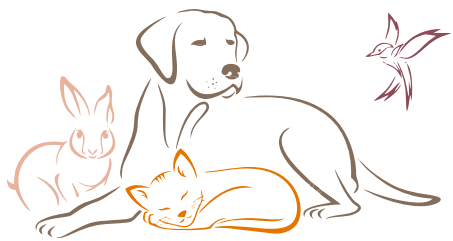
Locally owned and operated

Ph: 434 8246 Fax 434 6280  
Email: [nodispensary@extra.co.nz](mailto:nodispensary@extra.co.nz)  
213-215 Thames St, Oamaru  
Opposite Subway



NEW PATIENTS WELCOME





## Havenwyck Pets *Creating Calm*



## Kitty Litter

Buy one  
get one  
**FREE!**

*while stocks last*

Monday - Friday 9am - 5pm, Saturday 10am - 2pm

**Petshop - Training - Rehoming**  
**2 Coquet St (03) 427 0174**

### Havenwyck Pets- Travelling with Pets

As the school holidays approach and December gets closer we start to think of what we are going to do with our critters.

Holidays with our dogs are a fantastic way to spend time with the family, there are many accommodation options that allow dogs, just look out for the pet friendly logo on their websites or give them a call!

Cats, rabbits and birds generally don't like to travel but if they do stay at home ensure they have a caregiver to feed and check them daily. House sitters are a wonderful option for those with multiple critters.

When travelling in the car ensure your pets are secure in a cage or crate, use safety rated harnesses and snugly bed to keep your pet comfortable.

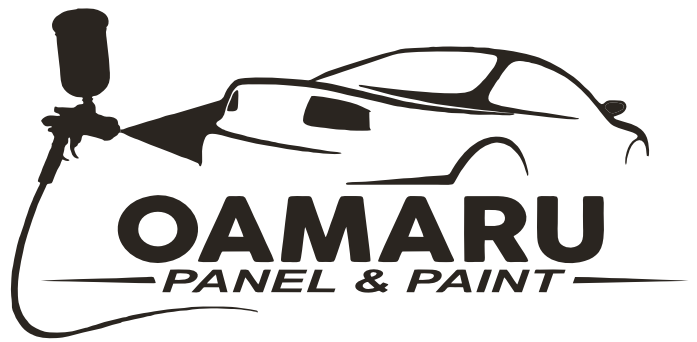
Remember to keep windows down when stopping and avoid travelling on hot days.

Happy Holidays! Kind Regards,  
Leanne Wreakes-Fallen DipVN

## Personalised Calendars

**OAMARU**  
**print&copy**

**Phone 03 434 9651**



North Otago Motor Group



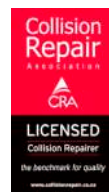
*Approved Insurance & Private Work Welcome*

**(03) 433 0145 - 24-30 Severn St**

**Pre-Approved**

**FMG**  
Advice & Insurance

**Smith & Smith**  
SINCE 1975



**Approved**

**STATE**

**ami**

**iag**

**N4**

**Lumley**

### Must Visit – Golden Bay

Golden Bay is a long bay stretching from Takaka up to Farewell Spit. There is only one way in by road over the Takaka hill - make sure you include a stop at Ngarua Caves where you will find a cave full of stalactites and stalagmites. From Nelson it is about a 1 hour 45 minute drive to the small, arty and vibrant township of Takaka and a 30 minute drive further west is Collingwood which is right at the doorstep of Farewell Spit and the end of the Heaphy Track.

Join a licensed tour operator to discover the 25km long Farewell Spit nature reserve with its ever changing sand dunes and internationally renowned bird sanctuary.

Both Kahurangi and Abel Tasman National Parks are easily accessible from Golden Bay for walking and tramping.

At Te Waikoropupu Springs you will find the largest coldwater springs in the southern hemisphere with some of the clearest water ever measured.

You will be spoilt for choice with the multitude of beaches to explore and enjoy in Golden Bay – Tata Beach and Pohara are the more accessible ones, Totaranui Beach is truly stunning and Wharakiki Beach with its extraordinary landforms is not to be missed.

Catch your dinner at Anatoki Salmon, dine at the Mussel Inn, enjoy the Takaka Saturday market, take a walk to Wainui Falls, go on a caving, kayaking or horse back adventure, discover the many cultural and historic sites, head to Labyrinth Rocks Park – Golden Bay is such an appealing destination to take a holiday and definitely one of the must visit destinations in New Zealand.

*Jannine Hore – The Travel Brokers*