

The community prefer to find their trade & service providers locally and rely on the Telegram for this.

Oamaru The Telegram

100% local 8,000+ homes weekly

22nd September 2020

Phone 434 9651

Issue 504



LINDSAY WHYTE

Painters and Decorators Ltd

50 Years Experience Master Painter

FREE PHONE 0800 242 8611



- Interior
- Exterior
- Wallpapering

CALL NOW!

With information getting easy and fast to access, it is leaving us open to Cybercrime. When it would have taken hours to steal all your photos and information - now takes seconds. There is and always is, an increased number of emails being sent, pretending to be local suppliers of goods and services. My advice is - never click, or install anything in your emails. Especially if they are threatening to close your account, sending unexpected overdue bills, or getting you to update your details. Check that the reply email address and sending address match the business it is from, before replying. If in doubt, look their number up and give them a call. Remember it only take a second or two to double check and have a think before working on your emails. Keep safe...

Until next week Regards, The Telegram.

Wounded Bull Fire Wood Ltd

Free delivery to Oamaru 3m³/6m³ loads
Stacking available at extra cost



Unseasoned (green)

Pine \$60 p/m³

O.M.P \$65 p/m³

Macro \$75 p/m³

Bluegum \$75 p/m³

Dry
(when available)

Call Karl 027 629 7664

Get in now and avoid winter prices
Qualified tree felling, portable mill available,
macro timber sales



Call Brian

0274 335 295

For your Annual Gutter Cleaning

All done from the ground so no stomping around on the roof
Local & Loyal

New Zealand Petfoods

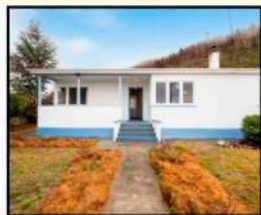
Dog Food and Dog Accessories available



Ph. 03 434 8484 - 16 Ouse Street

SOUTHERN WIDE REAL ESTATE

CASH UP AND MOVE TO NORTH OTAGO!



Kurow in the Waitaki Valley has everything you need! This 3 bedroomed home has been renovated to a high standard, great spaces for entertaining, easy care section is flat and is suitable for subdividing with Council approval. There are a number of fruit trees and garage to park your boat. You are only a short drive to the lakes, walking tracks, 9 hole golf course, school pool and also club ski field! The local Waitaki wine industry produces world class wines and the A20 bike trail also passes through Kurow. Deadline Private Treaty Sale ends 8 October 2020, prior offers considered.



Daryl Siggelko
Urban/Lifestyle
027 520 0040
daryls@southernwide.co.nz

Web Ref #: SWOU12091

225 Thames St, Oamaru
Ph 03 434 7422
www.southernwide.co.nz
SRM REALTY LTD LICENSED REAA 2008

Goldies Glass Ltd

24 hour glass service

Phone the
experienced professionals

Insurance Work Welcome

03 434 8701 | 027 433 2258

77 Humber St, Oamaru



Rawleigh's
HEALTHCARE
Your Local Stockist
Wendy Simpson
Independent Distributor
Rose's General Store
5 Tyne Street, Oamaru
Phone 021 515205
a/h 434 8285



BATTERY AUTO ELECTRIC
7 REGINA LANE OAMARU - PH: 437 0781
Batteries and all electric work on all vehicles



Oamaru Based Tree Specialist
Tree Care, Difficult Tree Removals,
Height Reduction, Hedge Trimming,
Trees Pruning, Stump Grinding & Chipping.
Qualified Arborists
Matt Slater 027 241 3343 03 437 1440
treesculptotago@hotmail.co.nz Oamaru



SMASH PALACE
ALPS TO OCEAN
ALPS 2
CYCLE HIRE
OCEAN
SMASH RENTALS PALACE
SMASH CAR PARTS PALACE
SHUTTLE SERVICE
10 Industrial Place, Oamaru Ph. (03) 433 1444
geoff@sps.co.nz



Trees Need Trimmed?
KEA TREEWORX
Certified Arborists
Pruning - Removals - Chipping
Chris Conklin 027 484 3395
Jack Vaughan 021 582 300
keatreeworks.co.nz

A lovely weekend just past and much needed rain last week for North Otago - Spring growth is now up and away, judging by the explosion of Blossom, Spring Bulbs and deciduous trees now showing green.

Hydrangeas are budding to leaf - the perfect time to feed and give a good soak - a dressing of Lime for pink and Alum Sulphate for blue.

Roses are top priority right now. Things to watch out for are die back after frost damage - not all branches make the grade.. If they have been affected, cut them right back to new growth. Also watch for growth below the graft - it comes up from the root stock, is usually a different colour and leaf to the grafted branches - cut right out. All Roses are grafted onto a strong root stock. Green fly can be controlled - they start on the new growth tips so can be removed with finger and thumb. I have not sprayed my Roses in the last few years, choosing instead to feed them well with aged manure in late Winter, then folia feed once leaves have fully grown. Some still succumb to Black Spot - I just remove affected leaves.

Planting: It's all on now for planting seedlings in flower and veg gardens and sowing seeds for Summer colour. Here are some suggestions. Wild flowers, Cottage plants, Nasturtiums, Lobelia, Petunias, Nemesis, Lavatera, Salvia, Marigolds. Spring is a time when seeds can be sown directly where you want them to grow or if you prefer not to compete with weeds, sow in seed trays or bedding 4 and 6 packs to develop roots.

Perennials are pushing up through mulch now. Hosta's are making a move, but there is still time to put the spade through clumps big enough to divide. Slice cleanly through with a sharp spade and transplant where needed.

Peony Roses are also pushing up fast... carefully clear mulch from around them to let sun in. Be very careful not to damage the new shoots.

Cyclamen: If you were given a Cyclamen in flower back in May, it is time to plant it outside in a cool shady spot to finish the growing year. Pot up again just before Winter for indoor flowering.

Lawns: Lawnmowers are out again... avoid cutting too low, as grass is still recovering from Winter dormancy. Scalping opens gaps for weeds to take hold. If Daisies and flat weeds are a problem, lawn spray will work now. I don't want to harm worms or good bacteria in lawns, so I only spot spray.

Vegetables: If you have never grown Veg but intend to grow your own food this growing season, it is not hard. A small patch of open ground in a warm spot dug deep and weeded, could produce a good amount of Veg with successive planting and sowing. Rows of Peas or Beans grown up netted supports can also act as a wind break at one end of the patch, with rows of Beetroot, Lettuce, Brassicas, root Veg then Potatoes at the end, with room for mounding the Potato rows. Ground that has not grown plants before, will not need building up with manure or fertilizer this season.

Potatoes to plant now as an early crop are Rocket, Cliffs Kidney, Jersey Benne and Maris Anchor.

Fruit trees in Blossom are looking for Bees, Raspberries and Gooseberries are showing leaf. Still time to thin out a Gooseberry bush to let light in for good fruit development and easier picking.

Cheers, Linda.





Strengthening Families
Defending Democracy
Scrap bad Gun Laws
Defend the Unborn
Support Farmers
Nope to Dope
Keep NZ Ours

NEWCONSERVATIVE.ORG.NZ

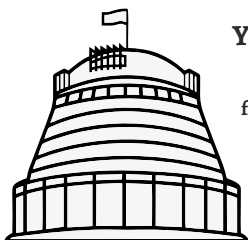
Troy Allan WAITAKI

Authorised by: T. Allan, 18 McLaughlins Rd, Darfield

Moist Fruit Cake

2 1/4 cups raisins, 3 cups sultanas, 1 cup currants, 1 cup chopped glace cherries, 1 1/2 cup coarsely chopped prunes, 1/3 cup Golden Syrup, 1/2 cup brandy, Finely grated rind of 1 orange, 250g butter, softened to room temperature, 1 cup firmly packed Dark Cane Sugar, 5 eggs, lightly beaten, 1 1/2 cups plain flour, 2 tsp mixed spice, 1 Tbsp brandy, as an optional extra

Preheat oven to 140°C conventional. Avoid fan forced when cooking fruit cakes, as the longer cooking time tends to dry out a fruit cake. Line base and sides of deep 20cm square cake pan with 3 thickness baking paper. Allow paper to come 5cm above the sides of the pan. Combine fruit, Golden Syrup, brandy and rind in large bowl; cover and allow to macerate overnight. Beat butter and dark cane sugar with electric mixer until creamy. Add eggs, beating well between each addition. The mixture will curdle slightly - don't be concerned as it does not affect the end result. Add macerated fruit to butter mixture. Add sifted plain flour and mixed spice to butter mixture and mix thoroughly. Spoon into pan and drop pan on bench to allow mixture to disperse evenly in pan. Bake cake for 4 hours. Cover loosely with foil if cake starts to over brown on top (this may happen around 1/2 way through the cooking time). Quarter turn pan in oven several times during baking to avoid it browning unevenly. Remove cake from oven; brush with extra brandy. Allow to cool in pan. Wrap in plastic and then foil and store in cool dark place. Store in airtight container in fridge on hot summer days.



You're invited to join us at the Opera House
7pm, Tuesday Sept 29

for Oamaru Rotary's Waitaki Electorate Candidates meeting

Meet the Candidates. Hear their policies.
Ask your questions.



North Otago Motor Group



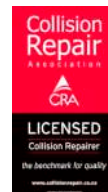
Approved Insurance & Private Work Welcome

(03) 433 0145 - 24-30 Severn St

Pre-Approved

FMG
Advice & Insurance

Smith & Smith
SINCE 1975



Approved

STATE

ami

iag

N4

Lumley

Musical Theatre Oamaru CHILDREN'S THEATRE PRESENTS

Oamaru Repertory Theatre
October 7, 8, 9,
10 & 11 at 2.00pm

Box Office open from
Monday October 5th
12.00pm – 1.50pm
Directed by Pat Gunn



*Wind in
the Willows*

All tickets \$10.00

Bookings now
open online at
iTICKET.co.nz

DRAFTLINE LTD Patrick Coll NZCD Arch

10 Beswick Street, Timaru

P 03 688 8455 E office@draftline.co.nz

www.draftline.co.nz

FOR ALL YOUR ARCHITECTURAL DESIGN & DRAUGHTING NEEDS





Where Happiness is Homemade
Keto Friendly & Yummy



MON-FRI 9AM - 5:30PM SAT 9:30AM - 2PM

10 Eden St, Oamaru. 03 433 1433

Like us on Facebook

Conversion Chart

LIQUID MEASUREMENTS

Metric (ml)	Imperial (oz)	Cups	Pints
30	1	$\frac{1}{8}$	
60	2	$\frac{1}{4}$	
80	2 $\frac{1}{4}$	$\frac{1}{3}$	
125	4	$\frac{1}{2}$	
150	4 $\frac{3}{4}$	-	$\frac{1}{4}$
185	6	$\frac{3}{4}$	
250	8	1	
300	9 $\frac{1}{2}$	-	$\frac{1}{2}$
375	12	1 $\frac{1}{2}$	
500	16	2	
600	20	2 $\frac{1}{2}$	1
750	24	3	
1000	32	4	

TEMPERATURES

Fahrenheit (°f)	Centigrade (°c)
500	260
450	230
400	200
350	175
300	150
250	120

WEIGHTS

Metric (g)	Imperial (oz)
10	$\frac{1}{3}$
50	1 $\frac{3}{4}$
100	3 $\frac{1}{2}$
250	8 $\frac{1}{5}$
500	17 $\frac{1}{2}$
750	26 $\frac{1}{2}$
1000	35 $\frac{1}{5}$
1kg = 2 $\frac{1}{5}$ lbs	



Waitaki Interiors

• Interior Design • Window Furnishings • Gifts & Homewares



03 434 7755

29 Thames Street
www.waitakiinteriors.co.nz

Springology - Waitaki Interiors

Daffodils and Cherry Blossoms have arrived and are welcoming in the start of spring which means it's time to put away your winter coloured accessories and bed linen and bring out those cheerful summery accents.

Spring cleaning fever makes most people want to freshen up some area of their home in time for Christmas. Maybe you want to introduce a feature wall or colour up your bedroom with a new bedspread or duvet cover. Now is the time to get it done before the December rush.

With the arrival of spring we have to prepare for the summer sun ahead. A sunscreen blind can protect furniture from the harsh New Zealand UV rays without obstructing the view while keeping your interior cool.

By adding a contrasting colour to what you already have can make a real visual impact in any room. If you have some red elements consider adding a few yellow or teal accessories to create a bit of excitement. Something as simple as moving a painting from another room and adding a bright new throw can transform a dull corner for spring.

You could paint a piece of old furniture a nice bright colour and add some flamboyant cushions. Therefore it doesn't have to cost the earth to freshen up your home for spring.

Pop in and see our friendly team at Waitaki Interiors.

Personalised
Calendars

OAMARU
print©
434 9651

OAMARU

SPORTS



OUTDOORS



Anything to do with fishing **SEE THE TEAM!**

223 Thames St Oamaru | Phone 434 5609
Over 60 years local experience

On the Hunt for the Little Blues

Oamaru's little bluey bike trail will keep the kids occupied these school holidays. Waitaki District Council's event coordinator Hayley Cusiel has been working on a great school holiday activity with Ben & Fiona Stratford. The Stratfords holiday in Taupo frequently, and during these holidays they have participated in the variety of family friendly biking routes around Taupo. In particular they thought the treasure hunt bike trail they did last Easter was a concept that could work well in Oamaru and have worked with Hayley to make an inaugural bike trial that's uniquely "Oamaruvian" for these school holidays. 10 blue bikes will be parked along the trail in Oamaru (utilising some of the A20 trail) from Saturday 26 September to Sunday 11 October. Starting in the Harbour bike park area, the trail will make its way to various local spots. Children will have a passport with a map and instructions on it and the hunt will be on to find all of the special blue bikes along the way. Each of the blue bikes will have a different letter. Once the children have collected them all, they then need to unscramble the letters to crack the code and then place their entry at Council HQ. The prizes are \$200, \$100 and \$50 vouchers to spend at any of the three local bike shops and will be drawn after the school holidays. The bikes will be up for the two weeks of the school holidays. Sarka Cibulcova, who recently painted one of Oamaru's Chorus boxes, has painted the little bluey that will be attached to each bike so they are easily identified (although they are all blue!). Mayor Gary Kircher said, "This is another great example of how we can make the Waitaki district the best place to be! It gets our kids out and about, and will be entertaining and fun for all the family! And it is an opportunity to show our youngsters some of the Oamaru area at the same time. It promises to be a popular event!"

Towards an Age-Friendly Waitaki

It's not easy getting older but we can make it easier for everyone as they age.

Seniors add value and character to a community. They have broad skills, expertise and experience, are highly productive in the workplace, form the core of volunteer groups, are active in local politics, and possess considerable spending power.

The Waitaki has proven itself a great place to grow old and to retire to, with safe, friendly and quirky towns, and plenty of activities and attractions within reach.

A quarter of Waitaki's residents are over 65, and that is expected to grow to a third in the next few decades. Age-friendly strategies are critical to making our district a better place in which to grow old. And it's not just the older population who benefit.

A strategically-placed ramp will help not only the older person on a walker, but also the mum with a buggy and the rugby player on crutches. The same applies to good road crossings, footpaths, affordable transportation and access to medical services. Having a range of housing options that allows people to "age in place" by downsizing when appropriate also opens up larger homes for young families on their way up.

With Age-Friendly strategies, the whole community wins! Waitaki District Council through Safer Waitaki, in partnership with Age Concern Otago, are identifying projects that will make our district an even better place to grow old.

Tell us your ideas for making Waitaki a more Age-Friendly Community:

027 434 7089 / 03 434 7008 /

NthOtago@ageconcernotago.co.nz

OAMARU + PHARMACY

Your Pharmacy

Day & Night stress support

Resources & Support for Young People

- The Lowdown
- Free text: 5626
- SPARX
- Aunty Dee
- School-based health services

Helplines for Children & Young People

- Free call or text: 1737
- Depression Helpline: 0800 111 757
- Youthline: 0800 376 633

Resources & Support for all ages

- Depression.org.nz - Free text: 4202
- Likeminds.org.nz

Helplines

- Depression helpline: 0800 111 757
 - Alcohol/drug helpline: 0800 787 797
 - Lifeline Aotearoa: 0800 543 354
- For those feeling suicidal or worried about someone who is suicidal*



Oamaru Pharmacy, 171 Thames st, Oamaru
Ph. 03 434 8741, Monday - Friday 8am - 6pm
Saturday 9.30 - 5pm, Sunday 10:30 - 4:30pm
www.pharmacy-nz.com



Let's Talk about Mental Health - Oamaru Pharmacy

Good mental health is an essential part of our overall health and well-being and is best understood simply as our state of mind. Our mental health will change throughout our lives, influenced by many factors, including our genetic make-up. These factors may also combine or overlap to exacerbate symptoms. Even if we are experiencing symptoms of mental distress or have an existing mental-health related diagnosis, with the right support we can still experience high levels of wellbeing. We all face challenges to our mental health at various times in our lives. The way we are feeling can change how we think and how we deal with tough times. It is important to help people build resilience and stay well, or get better if they are having problems. Some people who experience poor mental health for a long time, or who are highly distressed, may meet the criteria for being diagnosed with a mental illness. Whether you're on a solo mission to boost your mental health, or want to embark on something more collaborative with friends or family, Mental Health Awareness Week provides a wealth of resources to help you on your journey. That journey could simply be learning a little bit more about the importance of improving our mental health, or it could be a starting point for a life-long quest to sustainable wellness & a healthier, happier mind. When you uplift your own wellbeing and happiness, you are more likely to raise the mental health of those around you – particularly your whānau & community. Being out in nature can provide a huge boost to your mental health & wellbeing. Get outside and give it a go! The workplace is a major contributor to mental health. As the NZ Mental Health Foundation says:

“when your mental wellbeing is strong and your workplace is supportive, you will feel more engaged in your mahi, be more productive and have higher morale and job satisfaction”. Ultimately, what you get out of Mental Health Awareness Week will be determined by how much you put in. The Mental Health Awareness Week's official website contains a plethora of material to allow you to either dip your toes or dive in head-first. Visit the website here and get involved. <https://mhaw.nz/get-involved>

There's a range of resources and services available to help including phone and online services and information, as well as face to face support. Most services are free, and provide information and confidential advice from trained professionals. There's also information for family, whānau, or friends if they need advice and support.

Mental Health Awareness Week runs from Monday 21 September until Sunday 27 September. Oamaru Pharmacy will be getting involved with plenty of information and resources. Come on in and feel free to have a chat or grab some information.



**WALL'S
FUNERAL SERVICES**

NZ owned & operated
Funeral Home

When you need us,
we'll be there.

Plan ahead with us, ease the burden on your loved ones by pre-planning.

Ensure your wishes are recorded and carried out.

Ensuring peace of mind

Funeral prearrangement simply means that by planning now, you can ensure that your funeral reflects your personal wishes.

49 Humber Street, Oamaru
P: 03 434 8266
E: admin@wallsfuneralservices.co.nz

Pieces of April - April Hayes Dickson

My husband, the KOR (King Of the Remote) enjoys a war movie as much as the next man. Assuming the next man has seen every war movie ever made and knows the first 15 minutes of “Saving Private Ryan” by heart.

I'm not averse to a good war movie myself and have long been interested in military history but in order to avoid sitting through Tom Hanks heroic arrival on Omaha Beach yet again, I recently suggested we view “WWII in Colour”. It's a Netflix docu-series that uses colourized archive footage.

For those of us who grew up seeing both world wars in black and white it's strangely confronting. While much of the footage is familiar it takes on a different life when in colour. Those grainy, grey images of our youth didn't come with rivers of crimson blood or the bluest of blue Aryan eyes staring down the lens.

While it's visually arresting there's a few historical omissions and boo boos. I wasn't too miffed that they had Roosevelt dying of a heart attack (it was a cerebral hemorrhage). But suggesting it was US troops that halted the Japanese march on Port Moresby is factually wrong. And it's particularly galling for a girl whose cousin, Harold “Dutchy” Atkinson, graphically described his war time experiences and the horrors of the Kakoda Track to her.

Just as Hank's Captain Miller was fictional so is the American view of what happened in the jungles of Papua New Guinea between July and December 1942. Lest we forget (the truth). piecesofapril@gmail.com

North Otago Motor Group

Spray Painter



North Otago Motor Group is the holder of the Toyota and Holden vehicle franchises for North Otago.

A vacancy exists in our busy Panelshop for a fully qualified
Spray Painter

Please direct all inquiries to:

Peter Robinson

Ph. 03 433 0143 or 027 434 4913

or write to:

North Otago Motor Group
PO Box 436, Oamaru



COMMUNITY SUPPORT WORKERS Waitaki District – Based in Oamaru

Permanent Part Time & Casual on Call
Positions available

Must be available to work between
the hours of 7am - 9am and 3pm to 10.30pm.
Also, weekend work on a roster-based system.

To be appointed the successful candidate will:

- Have a strong commitment to providing support in ways, at the times and places agreed with the person they are working with.
- Work well with people and have a recognition that every day may be different.
- Be a person that looks for opportunities to develop and maintain community connections and networks with a focus on supporting the community towards greater inclusion for all people.
- Have experience working with people with disabilities would be a distinct advantage.

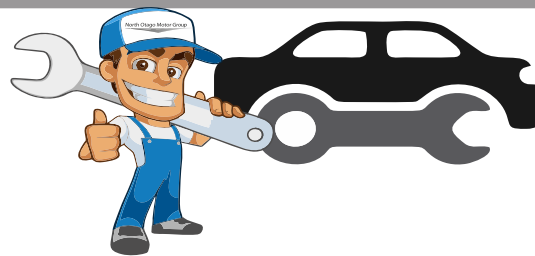
If you are passionate about supporting people to live independently and engage in their local community, we want to hear from you. Please contact our Business Support team (03) 365 5661 or email Southern.Recruitment@ccsDisabilityAction.org.nz or drop into the Waitaki Branch at 316 Thames Highway, Oamaru, for an application pack. We are committed to ensuring our application process is accessible to everyone, please let us know if you require an alternative method of application.

Application closing date:
5.00pm, Friday 2nd October 2020

MUST VISIT – WELLINGTON

The nation's capital is a fantastic compact city to visit which has great shopping, arts and culture and top natural attractions. Of course, no trip to Wellington would be complete without a visit to Te Papa and the iconic red cable car will take you from the busy streets of Wellington up the hillside and from here you can easily access the botanic gardens, Space Place at Carter Observatory and Zealandia Wildlife Sanctuary. Lesser known but definitely recommended is a trip out to Matiu/Somes Island which is a predator-free scientific and historic reserve. Pack a picnic lunch and catch the ferry which runs 7 days a week from Queens Wharf. Offering fantastic views across the harbour to Wellington City, Somes Island is a great place to explore with the opportunity to see many native birds, plants, insects and reptiles including tuatara. Somes Island was used as a quarantine station for both humans and animals, an internment camp and as a military defence position so there are plenty of historic sites to see and stories to uncover.

Whether it be wandering the waterfront, relaxing at the inner city beach of Oriental Bay, having a close encounter at the



Servicing Vehicles
for over 25 years
North Otago Motor Group

6 Qualified Technicians

W.O.F.

TYRES

SERVICING

ALL MAKES

03 433 0144

The only qualified Toyota Specialist in town
Loan Vehicles available

From start to finish...
WE DO IT ALL!

zoo, visiting Cuba Street, enjoying the views from Mount Victoria lookout, experiencing Courtney Place, checking out Weta Workshop or visiting parliament buildings and the iconic Beehive, Wellington has something to offer everyone and is definitely a must visit destination.

Jannine Hore – Travel Broker



**SHOP LOCAL.
EAT LOCAL.
SPEND LOCAL.
ENJOY LOCAL.**

www.shopoamaru.co.nz

North Otago Motor Group

CAR OF THE WEEK



Toyota Wish Z

2004 - 2 Litre Petrol

\$8,995 (\$37 P/W)*



Mon-Fri 8am to 5:30pm, Sat 9am to 12pm

*Based on Classic Finance with a 20% deposit over 60 months at 9.95% interest. \$409.20 establishment fee and normal Toyota Financial Services lending criteria apply

Motoring with Martin

Hi! Martin here, North Otago Motor Group. We have a large selection of late model X rentals, this weeks car of the week is a 2004 Toyota Wish Z, 2 litre, do you want the flexibility to carry 6 people but don't want a van? Then come in and check out our Toyota Wish, It has 2 seats in the rear that appear when you need them and disappear when you don't. This is a Toyota certified import with 12 month warranty and NZ audio fitted. Come in and test drive today. We have over 35 years LOCAL experience in the industry and our team, Peter, Jamie and myself are here to help you. Being local has huge advantages for you. We are close to where you live; you can pop in and see us or we can come to you - plus we have a service and parts department. See us any day including Saturday 9am-12, or call us to make an appointment outside working hours. Loads of options of vehicles too, from small run-bouts, SUV's to 4x4's. Plus we can cover everything from finance, insurance and extended warranties. Have a great week. *Martin 0800660070*



Martin

I strive to ensure the animals here are able to express natural behaviours by providing them with enrichment and items within their enclosure to reduce stress. I promote minimal handling for Rabbits and Guinea Pigs - you may ask why - this is due to small mammals being a prey animal, other creatures (dogs, cats, birds) prey on small furry critters for food, when we go to pick them up this simulated a fear response as natural instinct is telling them they may get eaten! Training and positive interactions with help keep your small furry calm if and when you need to pick them up! Come and see me if you would like to learn more! *Leanne Wreakes-Fallen. Dip.VN*



Havenwyck Pets
Creating Calm



FISH

We have over 100 different species available each week

Monday - Friday 9am - 5pm, Saturday 10am - 2pm

Petshop - Training - Rehoming
2 Coquet St 427 0174

Havenwyck Pets

Creating: verb; cause (something) to happen as a result of one's actions.

Calm: adjective; not showing or feeling nervousness, anger, or other strong emotions.

In my youth I bred and showed Guinea Pigs, this started my passion for working with animals. I was able to learn and strive to expand my knowledge whilst working in Kennels/Catteries, on Dairy farms and within the Veterinary Industry as a Qualified Veterinary Nurse. A big part of my self discovery was with the behaviour of all animals, big and small, they all have natural instincts that are stronger than our own; this is due to all species being altered in some way to fit into the human world, and as I discovered this can cause anxiety and fear. Over many years of research I have delved into what I can do to Create a Calm environment for the animals I work with. You will find at Havenwyck Pets

Community diary

Wednesday 23th September

Excelsior Petanque Club; Ph 4372557, Wed & Sun 1-3pm, Excelsior Rugby & Sports Club.

Free JP for certifying documents, affidavits, & declarations. 10-1pm at the Public Library.

Waitaki community gardens, Seed to Table course. Learn to grow your own food. commencing Wednesday 23, 10 am till 12pm for 7 weeks, children with caregivers welcome. Contact Ra for more details 021 115 4884 or email waitaki.community.gardens@gmail.com

Thursday 24th

N.O. Asthma Society Respiratory Exercise Class, 10am, St John Hall, Exe St. Ph 437 2673.

Migrant Meet and Share, 10.30am at the Landsar Rooms in Severn St. Build connections & learn about life in Waitaki. Ph Maria 021 066 5143.

Whitestone Weavers: meet in the Salvation Army hall 10am – 3.30pm. Ph. J Browne 4395543

Friday 25th

AA; Orwell St Chapel, 12noon. Ph. 0277227818.

The Dome will be open for viewing; Bookings are essential. Email marg-hans-briens@xtra.co.nz to book a time.

Sunday 27th

AA Meeting; Orwell St Chapel, 6pm. Ph. 0277227818 or 4372337.

Oamaru Baptist Church; Sandringham St, Service at 10am. All welcome.

Oamaru Phoenix Bowling Club Open Day; 1:30pm, All members & intending members welcome. (casual dress)

Reformed Church Oamaru, 4 Eden St, morning service at 10:30am, followed by Sunday School, afternoon service at 5.00pm.

St Paul's Church, Coquet St, service and kids club. All welcome, 10am.

Monday 28th

Genealogy help by local genealogist - at the Oamaru library 10 am - 12noon.

Waitaki Woodturners; 1 pm – Oamaru Race Course & Tuesday evening at 7 pm. Ph 439 5795.

Tuesdays 29th

AA Meeting; Orwell St Chapel, 7:30pm, Ph. 434 0227 or Ph. 432 4191.

Age Concern Gentle Exercise. 1:30 – 2:45pm Seated exercise class with music, followed by afternoon tea. Offered during Alert Level 2 with appropriate precautions. Orwell St Church.

U3A Waitaki, talks, discussions for enquiring minds, 2-4pm. St Johns Hall Lounge. Ph. 434 6613.

Public Notices

Oamaru Coffee Riders, ALL riders, all abilities catered for. For ride times & venues. ph 0211214627

AGM Notices

Creative Fibre North Otago Spinners & Weavers Monday 28th September 10am St Luke's Hall, Wharfe Street. Ph 03 437 2501.

Oamaru Steam & Rail Society AGM 24th September at 7:30pm OSR Clubrooms, 1b Humber St. followed by supper, all welcome.

Services

Builder Available; License Builder Neil Miller Phone 027 405 7147.

Carpet/Vinyl layer second hand carpet & repairs. Dion 0223924852.

Office space for hire by the month, day or hour. The Business Hive. Ph: 398 2400.

Smash Palace, for rental cars/vans/bikes, car parts and shuttle service. Ph. 433 1444.

Free

Battery Lawnmower in working order needs some TLC. Ph. 022 098 7013

Altrusa Oamaru

held their annual Bazaar September 12 & 13, despite restrictions because of covid 19, this was a successful weekend. Funds raised by Altrusa go to helping others in our community, e.g Tertiary awards; Literacy; swimming to name but a few. Thank you to those who took the time during shut down to sort and contact us about craft items etc, no longer needed, and of course those who bought them. If you are interested in being part of the fun and fellowship of being an Altrusan in Oamaru assisting our community – contact 4370747 or email president.oamaru@altrusa.org.nz



THAI FOOD

11:30-2:30 & 5-9 7 DAYS

BANGKOKRECIPE.CO.NZ
03 434 6245 220 THAMES ST.

SuperGold 10% OFF LUNCH TIME for SuperGold Card holder



\$65/m
UNSEASONED FIREWOOD

Next years Firewood
Contact Richard
0279663636

For Sale

Jenki Treadmill New \$200 021 047 8854

Wanted

Tools wanted! Tradesman, carpenters, gardening tools etc. Ph. 021 450 405.

Work Wanted

Admin/Finance Administrator seeking work for full or part-time work. Call 027 630 6448.



Get your rental property up to scratch.

Mammoth

DUNBAR'S INSULATION

Your local Heat Saving Specialists
Call today!! 027 78 98 788 or book online
www.dunbarsinsulation.co.nz



HANDYMAN

General indoor & outdoor repairs, fencing, decking, bathroom, kitchen renos & more...

PH. TOM 021 0233 2002 OR 434 3326



The Business Hive

Professional office space for hire!

Flexible and affordable workspaces for hire by the month, day or hour.

Workspaces | Meeting Rooms | Workshops
thebusinesshive.co.nz | 03 398 2400

PASSPORT PHOTOS

We Do Passport and ID Photos

Adults / Children **ALL Countries**

NZ Drivers Licence Photos
NZ Firearms Licence Photos
KIWI Access Photos

Lotto 'n Things (03) 437 1153
411a Thames Highway

Handy Phone Listings

Accommodation & Facilities

- ▶ **Holiday Home - Seaviews 'n Siestas**
Relax 10' off Moeraki021 0827 0805

Acupuncture & Massage

- ▶ **Rick Loos (NZRA)**03 434 9663
Acupuncture, Massage & Reflexology

Building & Construction

- ▶ **DOMINATOR Garage Door Centre**
.....Quality you can trust.....03 434 8476
- ▶ **David Ovens Building Contractor Ltd**
.....Licensed B/P.....027 481 9424
- ▶ **Handyman Al's Maintenance & Repairs, qualified joiner**.....027 221 1069
- ▶ **MGM Handyman Services,**
Your professional handyman 022 3106294
- ▶ **Wayne Nuttall Builders**..... 437 2513
.....027 434 3409

Carpet & Vinyl layer

- ▶ **Dion**.....0223924852
specialising in second hand carpet & repairs
- ▶ **Flooring Specialist ...** free measure and quote
in Oamaru township 021 727 498

Chiropractor

- ▶ **Oamaru Chiropractic**.....021 729 868
Robert Brydges179 Thames St
- ▶ **Ron Sim Chiropractor**.....434 8784
.....31 Essex St, Weston

Cleaning

- ▶ **A1 Spic n' Span**.....434 5534
Almost ALL Cleaning027 737 8423
- ▶ **AA Gutter Cleaner**.....0274 335 295
For your annual Gutter Cleaning...
- ▶ **A+ Services NZ Ltd**.....0800 155 166
windows, gutters and carpets..... 027 7144 812
- ▶ **Kimis Home Cleaning**.....027 292 1023
Your home cleaning service....

Counselling

- ▶ **AYR St - Counselling**027 6861849
Kaye Mattingley...Dip, Grad.S.Sc. Otago.NZRSW. MANZASW
- ▶ **Barbara Liffiton**0211 807 366
.....NZ RCpN, Grad Dip GT, Prov NZAC

Dental

- ▶ **Oamaru Denture Clinic**434 7560
Reg Clinical Dental Technician, 4/6 Coquet St

Dressmakers

- ▶ **Robinson Gray**021 173 6161
.....Tailored clothing & alteration
- ▶ **Jenny Boon**022 034.9190
.....Clothing alterations

Driver Lessons

- ▶ **XTO Driver training Ltd** ..027 262 2031
.....Driving Instructor/Driving Lessons

DVD and CD

- ▶ **Oamaru Public Library**.....433 0850
.....cleaning service (resurface), \$5 per disc

Electricians & Appliances

- ▶ **Robert Jones - Electrician**. 027 445 0523
.....434 0994
- ▶ **Whitestone Appliances**..... 021 366 446
.....repairs.....434 6810

Entertainment

- ▶ **Sylviane's Karaoke**027 737 8360
all occasions - bookings sylgal@msn.com

Firewood

- ▶ **Weston Firewood**.....434 1085
.....021 052 2877

Funeral Directors

- ▶ **Walls Funeral Services**.....434 8266
.....49 Humber St

Gardening & lawns

- ▶ **Ashleys Lawn & Garden Care**.4372865
Includes ride on lawns.....0221086606
- ▶ **CHANGEZ Landscape Property Services**
Property maintenance - Steve 021 1148 900
- ▶ **Crew Cut large lawns**
Paul Houlaham..... 021 331 261
- ▶ **Inside Out Landscaping Property & Garden Maintenance**. ph Brett 0212166775
- ▶ **Oamaru Garden Maintenance**
Richard Kennedy021 0474758
- ▶ **Roses, garden weeding, hedges & lawns**
Steven......ph/txt....027 2609988

General Store

- ▶ **Roses General Store**021 515 205
9 Tyne St.....after hours...434 8285

Guided Tours

- ▶ **Daily Historic Oamaru Tours**
.....027 434 1173

Handyman

- ▶ **Handyman**027 642 6474
Old job, water blasting, repairs, call or text.

Insulation

- ▶ **Dunbars Insulation**027 789 8788
.....local and affordable

Interior Design

- ▶ **Tracey Vickers Design** 027 5420 215
Upholstery and Furnishings03 439 5370
- ▶ **Waitaki Interiors** 434 7755
All window furnishings

Immigration

- ▶ **Immigration & Secretarial Services Ltd**
sylviane@isservices.nz.....027 737 8360

Joinery

- ▶ **Inex Joinery/Kitchens 4 Less**
335 Thames Hwy..... 4341533 or 021 1085500
- ▶ **Rycole Joinery Custom designed kitchens**
.....434 5012.....027 276 2866

Mobile Travel Broker

- ▶ **Lynne Sinclair, NZ Travel Brokers**.....
Longest established broker in North Otago..432 4172

Painters & Decorators

- ▶ **ACE Painters**027 201 1918
....for all your painting needs.
- ▶ **Central Furnishers**434 8994
....custom made drapes & binds
- ▶ **Don - Painter & Decorator - 25 years**
....Call for a quotation027 2205403
- ▶ **Solid Plastering**027 3137250
....David Caldwell Plastering

Pets

- ▶ **Suds & Paws for dog grooming** 4345957
- ▶ **Paws Awhile Boarding Cattery** 4341296

Plumbers

- ▶ **AG Plumbing**.....021434950
.....Blocked drains & CCTV Camera
- ▶ **Cunningham Plumbing, Oamaru**
.....Plumbing & Drainlaying...0800 555 105
- ▶ **Foley Plumbers Oamaru**.....434 2330
.....Sam Boswell.....0800 303 530
- ▶ **Hiflo's Group** 03 434 9873
.....Plumbing, Heating & Rockgas

Professional Podiatrist

- ▶ **Simply Feet Podiatry**.....437 9025
.....316 Thames Hwy, open Mon-Fri

Picture Framers, Printing

- ▶ **Waimate Picture Framers**...03 6898568
For all your framing requirements...0272918763
- ▶ **Oamaru Print and Copy Ltd**...434 9651
From business cards to larger posters print & design

Progress Coach

- ▶ **Jenny Malcolm**.....0274 477079
.....*Helping you progress forward.*

Real Estate

- ▶ **Ray White - Leona Stretch**..0274 820908
.....*Essential Realty Ltd Licensed REA 2008*

Transportation & Rental Vehicles

- ▶ **Airport/Hospital, Oamaru Tour**...434 9506
.....transfers (*Merv Aitcheson*)0272268347
- ▶ **Driving Miss Daisy**434 8421
.....Appointments, Dunedin & Timaru Hospital, Shopping
- ▶ **Oamaru Dunedin shuttle**434 3007
.....Mon - Fri, Door to Door027 2565651
- ▶ **Smash Palace**.....433 1444
.....Cars, Vans, Bicycle Hire & Shuttle Service

TV Installation & Repairs etc

- ▶ **Nathan Oakes TV, Sound, PC Install & Repairs**.....0210 237 0646 or 03 437 2474

Upholstery

- ▶ **Craft Upholstery**.....Kirk 021 022 98678
..... www.craftupholstery.co.nz

Window Tinting

- ▶ **Tint a Window**.....0800 368 468
UV fade, heat, glare & privacy.tintawindow.co.nz



NORTH OTAGO PHARMACY

VOTED BEST CUSTOMER SERVICE 2019

OPEN 7 DAYS

Mon-Fri 8:30am - 6pm
Sat 9am - 5pm
Sun 10am - 4:30pm

Locally owned and operated

Ph: 434 8246 Fax 434 6280
Email: nodispensary@xtra.co.nz
213-215 Thames St, Oamaru
Opposite Subway



NEW PATIENTS WELCOME

..Welcome To.. "DEJA MOO"



...The **BEST** ice-cream
IN ALL OF OAMARU!!
AND
"WILLOW ADRIFF" 

Name:
Age:
Phone:

Please complete and return to:
Harbour Street Bakery or Deja Moo
4 Harbour St, Oamaru by 10th October.
Open to all ages.